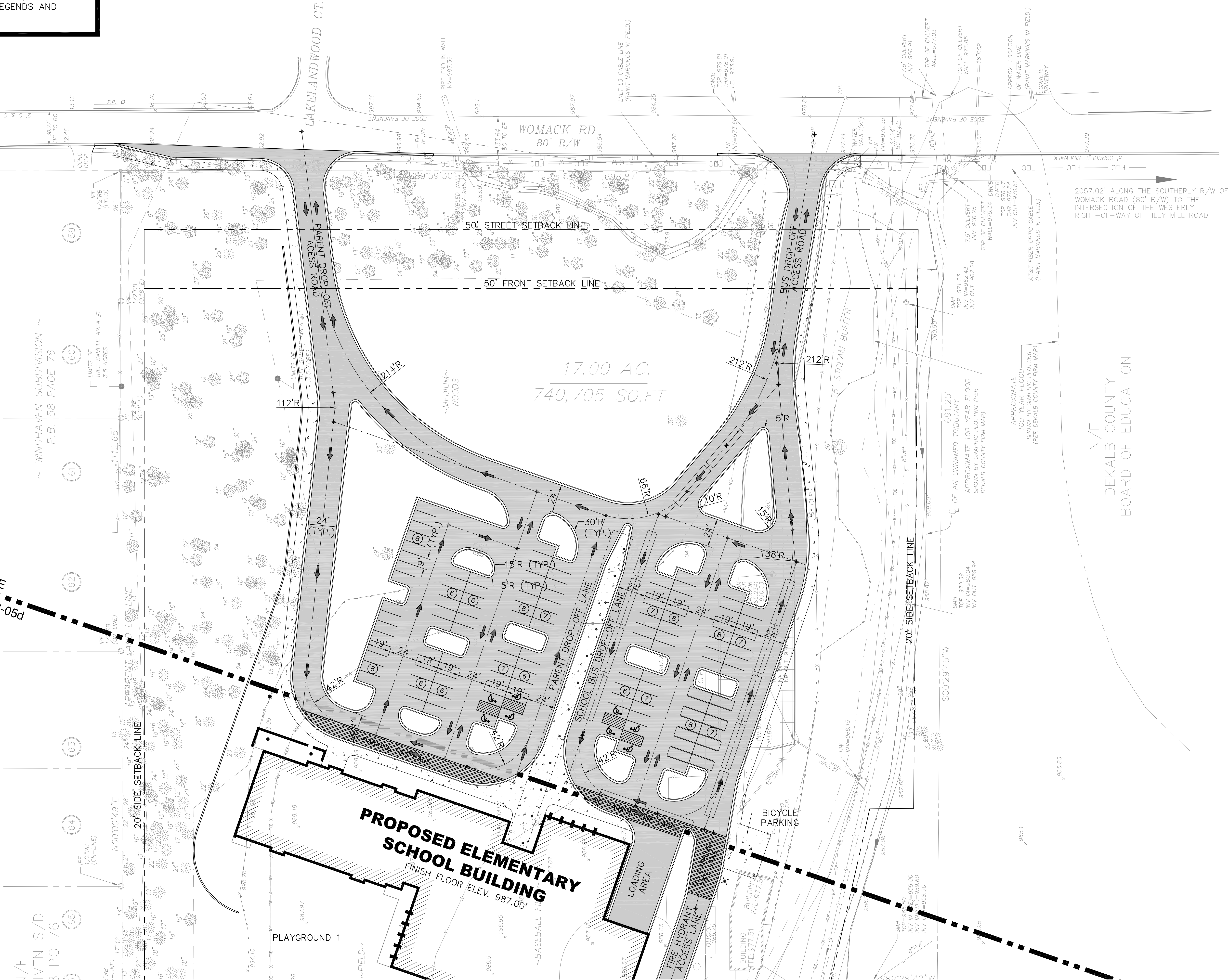
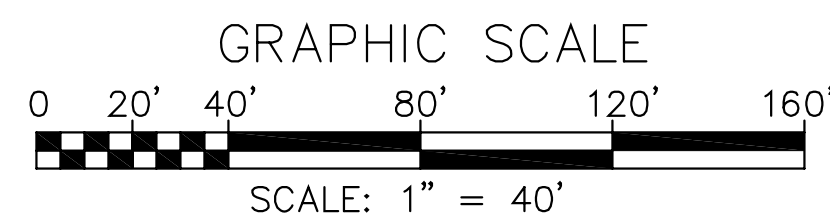


NOTE:

REFER TO SHEETS C-01a AND C-02a FOR GENERAL NOTES, LEGENDS AND ABBREVIATIONS.



MATCH LINE
SEE SHEET C-05d



RICHARD WITTSCHIEDE HAND

ARCHITECTURE
INTERIORS
PLANNING
11 Simpson Street
Atlanta, Georgia 30308



THIS DRAWING IS THE PROPERTY OF RICHARD WITTSCHIEDE ARCHITECTS, INC. AND IS NOT TO BE USED ON ANY OTHER PROJECT AND SHALL BE RETURNED UPON REQUEST. COPYRIGHT © 2008 RICHARD WITTSCHIEDE ARCHITECTS, INC. NOT VALID UNLESS SIGNED AND SEALED.

**Dunwoody-Chamblee Area
Elementary School 'D'
DeKalb County School System
Womack Road**

REVISIONS	
#	DATE DESCRIPTION

Floor Plans
**Site Layout
Plan 1 of 2
Final Phase**

JOB NUMBER
200621

DATE
1/18/2008

SHEET NUMBER
C - 05c