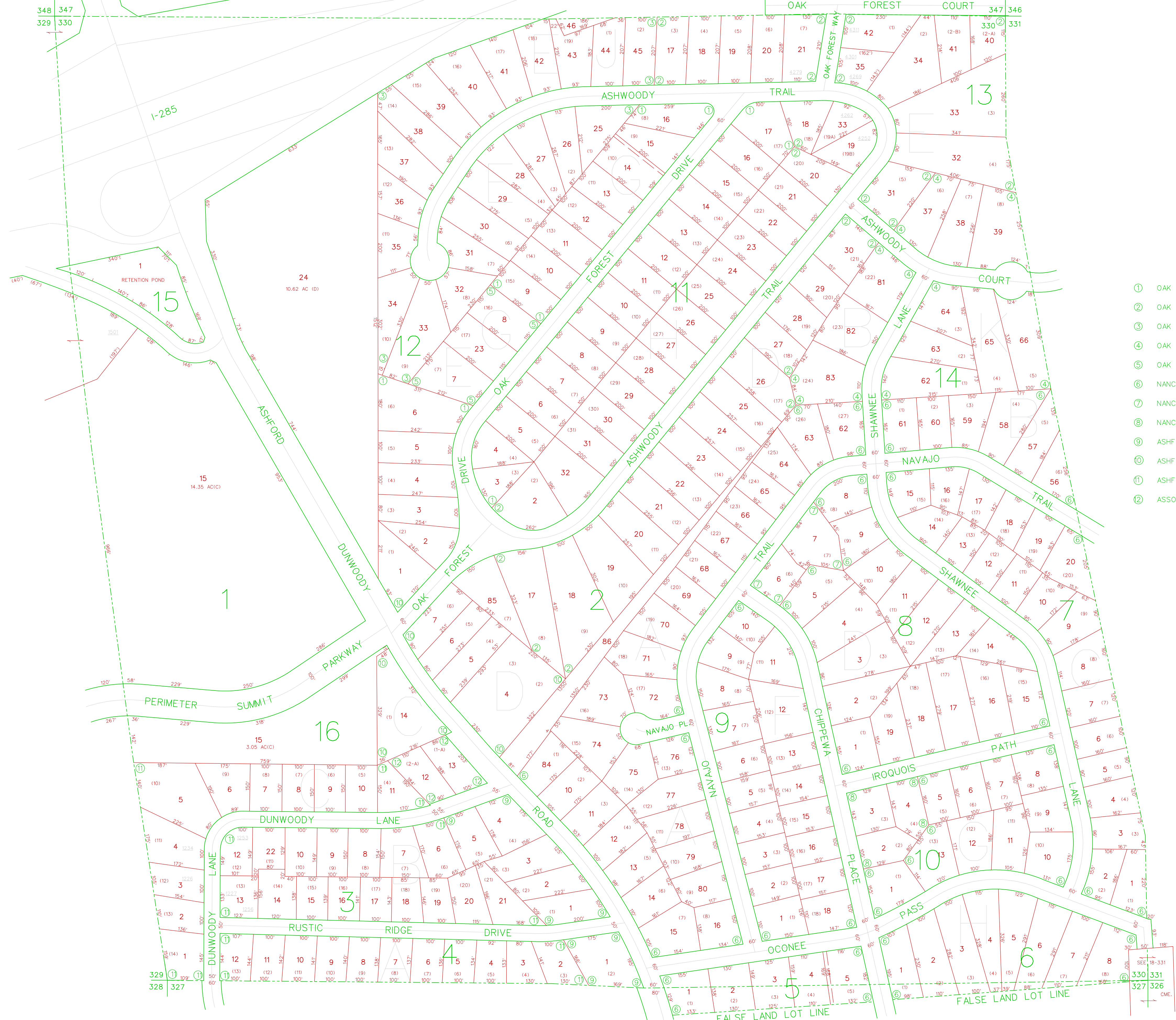


348 347  
329 330



- ① OAK FOREST HILLS-UNIT 1-P.B.25-P.54
- ② OAK FOREST HILLS-UNIT 2-P.B.31-P.2
- ③ OAK FOREST HILLS-UNIT 3-P.B.31-P.2
- ④ OAK FOREST HILLS-UNIT 4-P.B.30-P.54
- ⑤ OAK FOREST HILLS-UNIT 1-REV.-P.B.30-P.21
- ⑥ NANCY CREEK HEIGHTS-UNIT 4-P.B.23-P.98
- ⑦ NANCY CREEK HEIGHTS-REV.-P.B.31-P.22
- ⑧ NANCY CREEK HEIGHTS-REV.-P.B.25-P.95
- ⑨ ASHFORD FOREST-UNIT 1-P.B.19-P.72
- ⑩ ASHFORD FOREST-UNIT 2-P.B.20-P.89
- ⑪ ASHFORD FOREST-UNIT 3-P.B.24-P.69
- ⑫ ASSOCIATED BROKERAGE CORP.-P.B.35-P.67

This Map was compiled from an aerial survey. It is to be used for tax purposes only. DeKalb County assumes no responsibility for the accuracy of information contained herein.

LAND DIST.	LAND LOT
18	330
DATE: 4/03/06	SCALE: 1"=200'