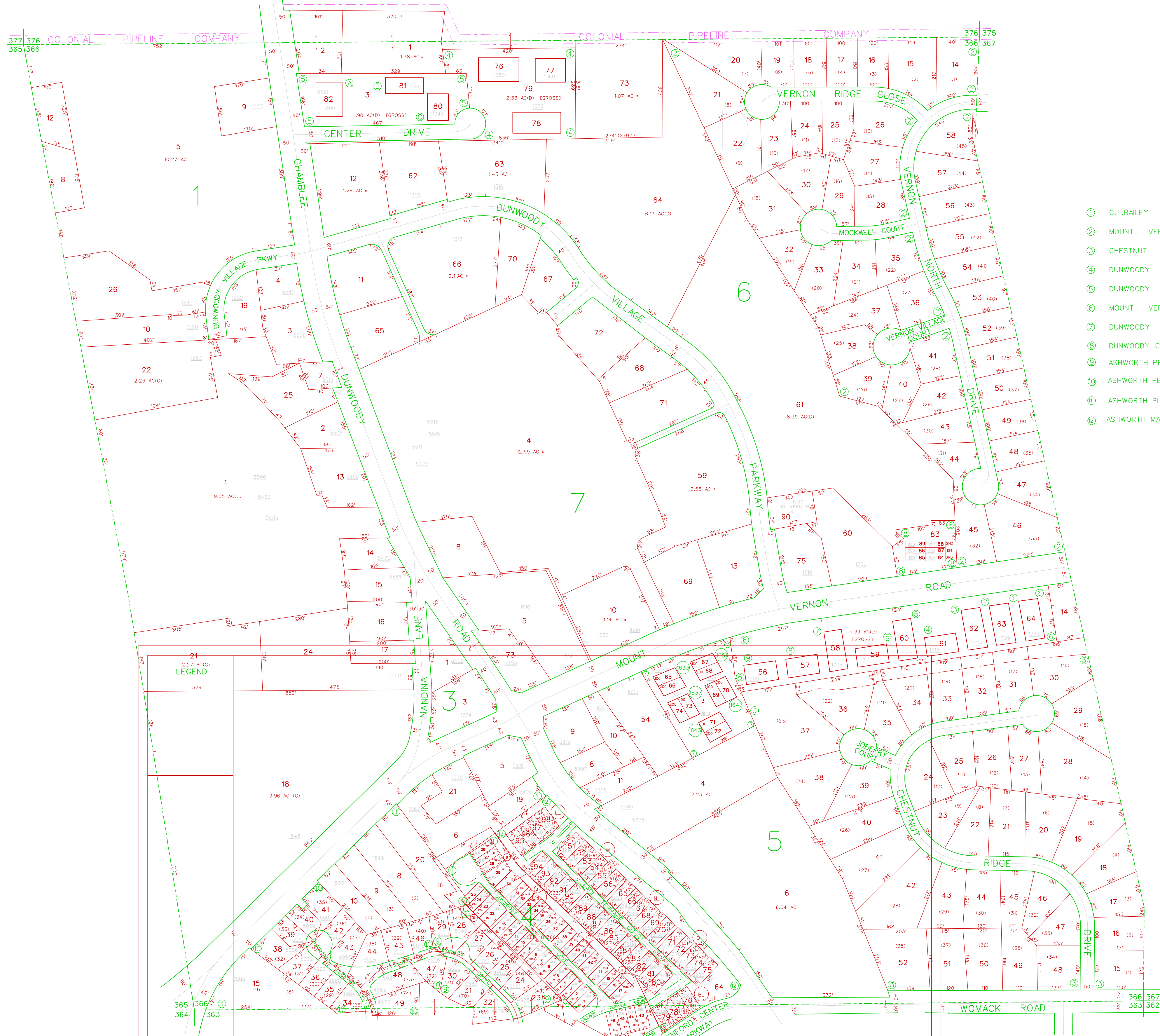


LEGEND



- ① G.T.BAILEY PROP.-P.B.16-P.11, PB 74-16
- ② MOUNT VERNON NORTH-UNIT NO.3-P.B.66-P.90
- ③ CHESTNUT RIDGE-P.B.67-P.98
- ④ DUNWOODY CENTER PHASE 2 5/9
- ⑤ DUNWOODY CENTER PHASE 1 5/26
- ⑥ MOUNT VERNON SQUARE 5/35
- ⑦ DUNWOODY EXCHANGE 5/68
- ⑧ DUNWOODY COMMONS 6/124
- ⑨ ASHWORTH PERSERVE UNIT 1- PHASE 1, PB 113/64
- ⑩ ASHWORTH PERSERVE UNIT 1- PHASE 2, PB 114/25
- ⑪ ASHWORTH PLACE S.F.A., 116/73
- ⑫ ASHWORTH MANOR, 119/106, Rev. 125/7

TOPO: -----
 PHOTO: -----

This Map was compiled from an aerial survey. It is to be used for tax purposes only. DeKalb County assumes no responsibility for the accuracy of information contained herein.

TOPO: -----
 PHOTO: -----

This Map was compiled from an aerial survey. It is to be used for tax purposes only. DeKalb County assumes no responsibility for the accuracy of information contained herein.

ASHWORTH PLACE S.F.A. 116/73
 ASHWORTH PLACE S.F.A. BUILDING C.D.E.F. 116/70
 ASHWORTH PLACE S.F.A. BUILDING H. 125/26

DEKALB COUNTY, GA.

LAND DIST. LAND LOT
18 366
 DATE: 01/10/05 SCALE: 1"=200'

LAND DIST. LAND LOT
18 366A
 DATE: 5/18/02 SCALE: 1"=200'