

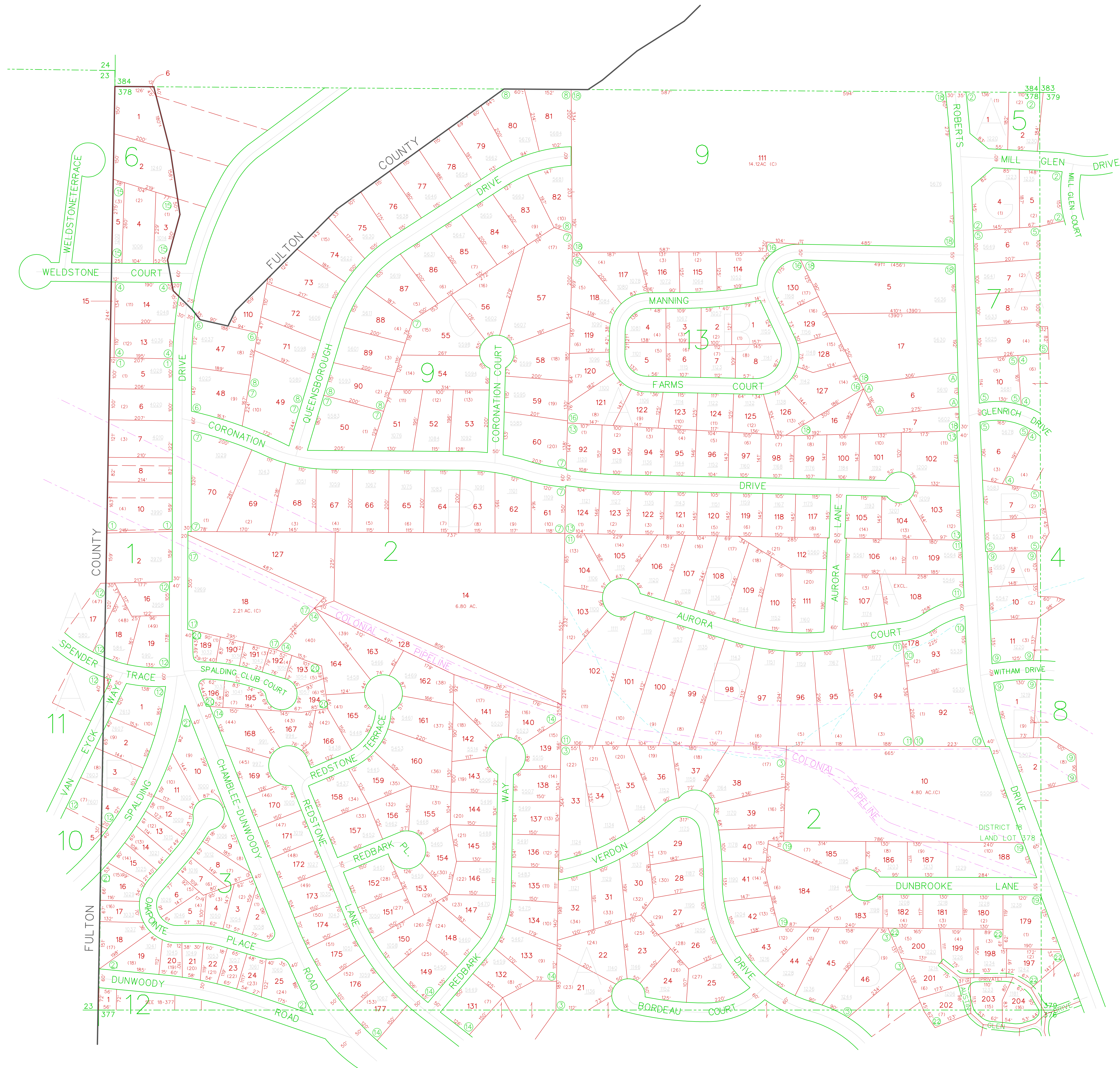
LEGEND

- ① O.M. HAMPSHIRE S/D
- ② MILL GLEN UNIT 146/135
- ③ VERDON FOREST 52/127
- ④ WELDSTONE MANOR NO.148/140
- ⑤ SELLARS FARM NO.149/96
- ⑥ SPALDING ESTATES NO.147/139
- ⑦ SPALDING ESTATES NO.2 51/112
- ⑧ SPALDING ESTATES NO.4 53/90
- ⑨ WITHMERE NO.156/155
- ⑩ NORTH POINT DEKALB NO.151/48
- ⑪ NORTH POINT DEKALB NO.2 59/49
- ⑫ WOODLAND FOREST 66/48
- ⑬ NORTH POINT 66/110
- ⑭ REDFIELD NO.3 70/83
- ⑮ WELDSTONE MANOR NO.146/108
- ⑯ MANNING FARMS 74/107,75/64
- ⑰ RONALD M. SMITH 43/72
- ⑱ PROP. OF S.N.MALONE UNREC.
- ⑲ GLEN COPELAND PROP.15/65
- ⑳ DUNBROOKE 76/19
- ㉑ SPALDING CLUB 90/140
- ㉒ OAKPOINTE S/D 92/57
- ㉓ AUSTIN GLEN, 101/98

TOPO:

PHOTO:

This Map was compiled from an aerial survey. It is to be used for tax purposes only. DeKalb County assumes no responsibility for the accuracy of information contained herein.



LAND DIST.	LAND LOT
18	378
DATE: 2/19/98	SCALE: 1"=200'