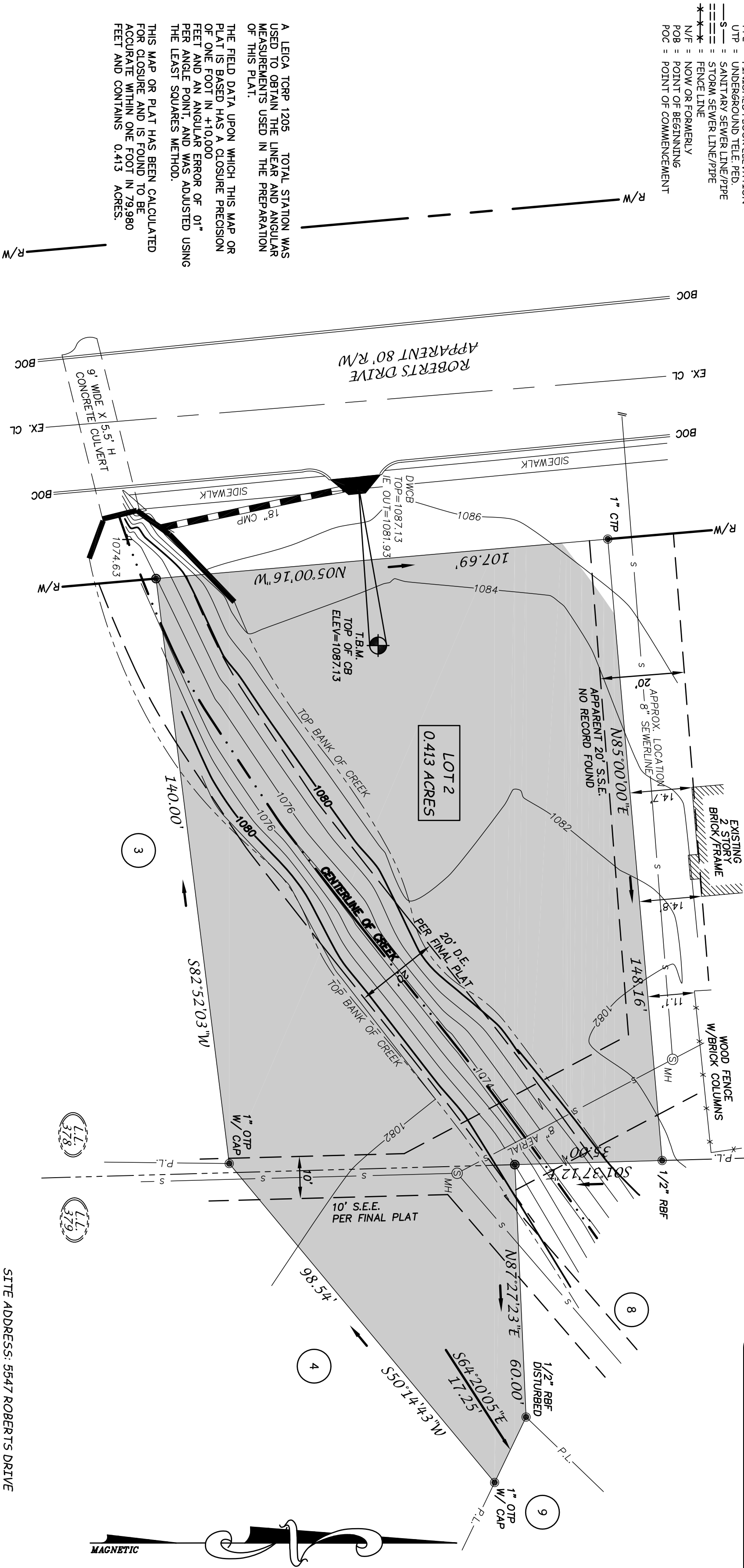
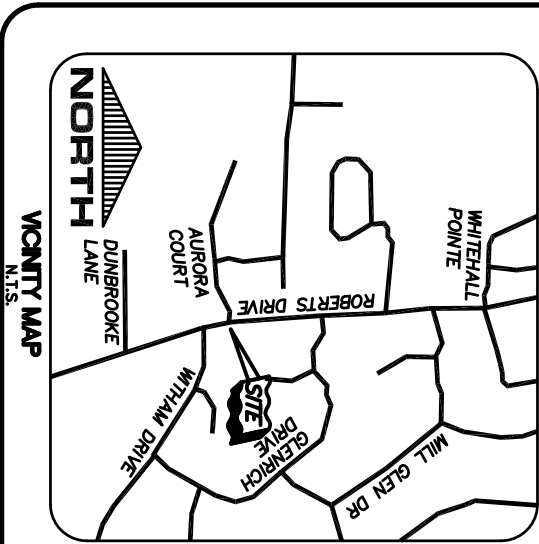


LEGEND

- NTS = NOT TO SCALE  
TPS = 1/2" REBAR PIN SET  
LL = LAND LOT  
LL = LAND LOT LINE  
PL = PROPERTY LINE  
CL = CENTERLINE  
BL = BUILDING LINE  
R/W = RIGHT-OF-WAY  
SSE = SANITARY SEWER EASEMENT  
DE = DRAINAGE EASEMENT  
MH = MANHOLE  
MB = CATCH BASIN  
JB = JUNCTION BOX  
HW = HEADWALL  
DI = DROP INLET  
PP = POWER/UTILITY POLE  
FH = FIRE HYDRANT  
IE = INVERT ELEVATION  
CTP = GRAMP TOP PIPE  
OTP = OPEN TOP PIPE  
FTE = FINISHED FLOOR ELEVATION  
UTP = UNDERGROUND TELE. PED.  
SSS = SANITARY SEWER LINE/PIPE  
SSS = STORM SEWER LINE/PIPE  
N/F = NOW OR FORMERLY  
FENCE LINE  
POB = POINT OF BEGINNING  
POC = POINT OF COMMENCEMENT

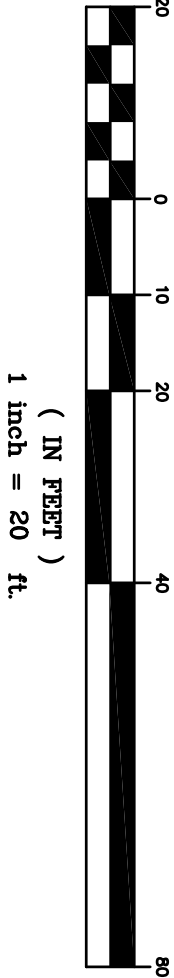
NO PORTION OF SUBJECT PROPERTY  
LIES WITHIN A DESIGNATED 100 YEAR  
FLOOD HAZARD AREA AS DEPICTED ON  
F.I.R.M. PANEL NO. 13089C0005H  
DATED MAY 7, 2001.

- REFERENCES:  
1) WARRANTY DEED RECORDED IN DEED BOOK 10436,  
PAGE 755, DEKALB COUNTY RECORDS.  
2) PLAT FOR WITHMORE SUBDIVISION RECORDED IN PLAT  
BOOK 57, PAGE 157, AFORESAID RECORDS.



A LEICA TOPP 1205 TOTAL STATION WAS  
USED TO OBTAIN THE LINEAR AND ANGULAR  
MEASUREMENTS USED IN THE PREPARATION  
OF THIS PLAT.  
THE FIELD DATA UPON WHICH THIS MAP OR  
PLAT IS BASED HAS A CLOSURE PRECISION  
OF ONE FOOT IN +10,000  
FEET AND AN ANGULAR ERROR OF .01"  
PER ANGLE POINT, AND WAS ADJUSTED USING  
THE LEAST SQUARES METHOD.  
THIS MAP OR PLAT HAS BEEN CALCULATED  
FOR CLOSURE AND IS FOUND TO BE  
ACCURATE WITHIN ONE FOOT IN 79,980  
FEET AND CONTAINS 0.413 ACRES.

GRAPHIC SCALE



THIS PLAT WAS PREPARED FOR THE EXCLUSIVE USE OF THE PERSON, PERSONS,  
OR ENTITY NAMED IN THE CERTIFICATE HEREON. SAID CERTIFICATE DOES NOT  
EXTEND TO ANY UNNAMED PERSON WITHOUT AN EXPRESS RECERTIFICATION BY  
THE SURVEYOR NAMING SAID PERSON.

IN MY OPINION, THIS PLAT IS A CORRECT  
REPRESENTATION OF THE LAND PLATTED  
AND HAS BEEN PREPARED IN CONFORMITY  
WITH THE MINIMUM STANDARDS AND  
REQUIREMENTS OF THE LAW.

MEMBER SURVEYING AND MAPPING  
SOCIETY OF GEORGIA

BOUNDARY SURVEY FOR:  
**NORTH ATLANTA CHURCH OF CHRIST, INC.**  
SITE ADDRESS: 5547 ROBERTS DRIVE

Ron Woods \07003\07003.dwg

1/19/07 378/379 18TH  
DEKALB COUNTY, GA. 1"=20'  
07003 BRS