



CITY OF DUNWOODY

41 Perimeter Center East, Suite 250

Dunwoody, GA 30346

Phone: 678.382.6700 • Fax: 678.382.6701

www.dunwoodyga.gov

MEMORANDUM

To: Honorable Mayor and City Council

From: Michael Smith, Director of Public Works

Date: March 8, 2010

Subject: Discussion of Mt. Vernon Road Path from Ashford Dunwoody Road to the City Limit at Sandy Springs

ITEM DESCRIPTION

Discussion of a path on the south side of Mt. Vernon Road from Ashford Dunwoody Road west to the city limit.

BACKGROUND

There have been multiple requests for pedestrian facilities on the south side of Mt. Vernon between Ashford Dunwoody Road and the western city limit. Council has expressed an interest in discussing the feasibility of a greenway/linear park in this area. A topographic map and a parcel map of the area are attached for reference.

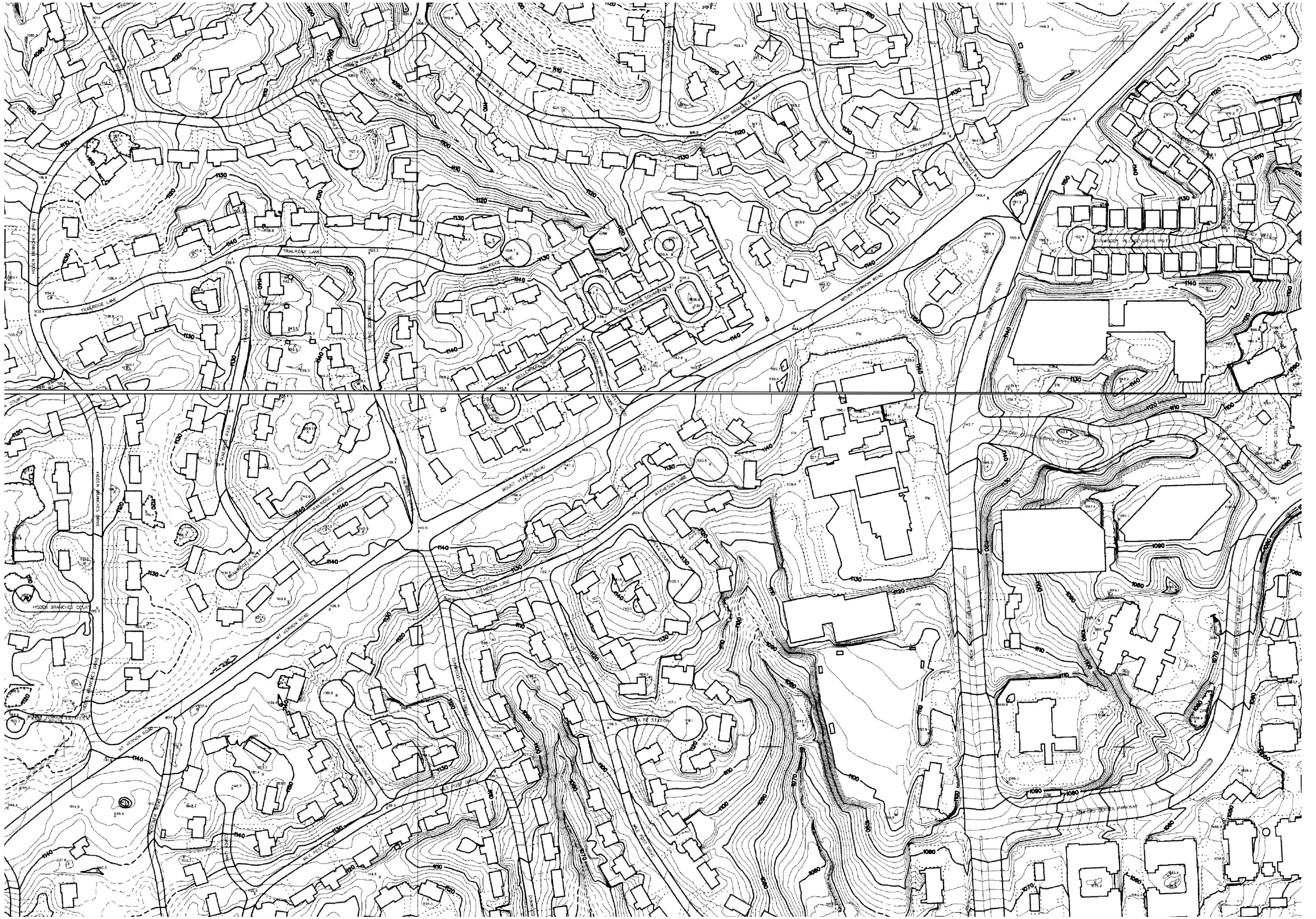
ISSUES

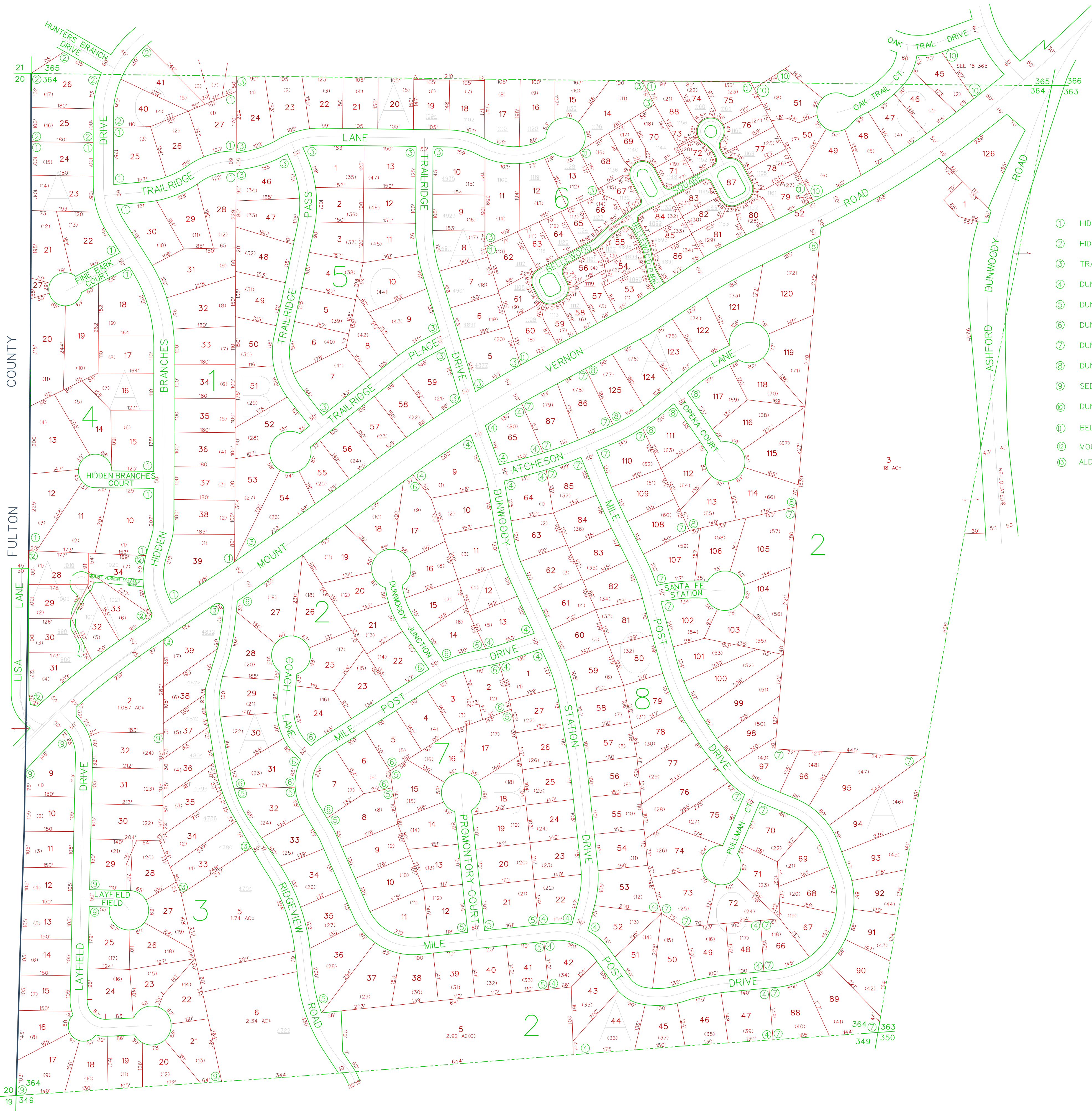
With the exception of the segment between Ridgeview Road and Layfield Drive there is ample right of way on the south side of Mt. Vernon for the construction of some type of path. For cost discussion purposes, a 10-foot wide, concrete, multi-use, meandering type path with minimal landscaping and no utility relocation would likely cost on the order of \$200,000. Conventional sidewalk parallel to the street with a narrow landscape strip would likely cost on the order of \$50,000. A detailed land survey and design would be needed to determine the extent of clearing and grading and to develop more accurate cost estimates.

Public Works is currently working on a sidewalk program for presentation to Council in April and is seeking proposals for the comprehensive transportation plan. Both of these efforts could have some bearing on what kind of pedestrian facility to provide on this section of Mt. Vernon Road.

RECOMMENDED ACTION

Advise staff and provide feedback on how to proceed with the concept of a path along this section of Mt. Vernon Road.





- ① HIDDEN BRANCHES - UNIT 1 - P.B. 49 - P. 151
- ② HIDDEN BRANCHES - UNIT 2 - P.B. 58 - P. 87
- ③ TRAILRIDGE - P.B. 70 - P. 97
- ④ DUNWOODY STATION - UNIT 1 - P.B. 69 - P. 149
- ⑤ DUNWOODY STATION - UNIT 2 - P.B. 69 - P. 136
- ⑥ DUNWOODY STATION - UNIT 3 - P.B. 69 - P. 47
- ⑦ DUNWOODY STATION - UNIT 4 - P.B. 69 - P. 152
- ⑧ DUNWOODY STATION - UNIT 5 - P.B. 69 - P. 156
- ⑨ SEDGEFIELD - P.B. 70 - P. 11
- ⑩ DUNWOODY WEST - P.B. 70 - P. 95
- ⑪ BELLEWOOD, 109/7,8,9
- ⑫ MOUNT VERNON ESTATES, 145/82-83
- ⑬ ALDEN POINT, 148/43-45
REV-PB 151/10-12

This Map was compiled from an aerial survey. It is to be used for tax purposes only. DeKalb County assumes no responsibility for the accuracy of information contained herein.

LAND DIST.	LAND LOT
18	364
DATE: 06/01/05	SCALE: 1"=200'