

October 17, 2011

**RFP 11-13
SEASONAL ARTIFICIAL ICE SKATING RINK
ADDENDUM #1**

**Receipt of this addendum should be acknowledged in your proposal.
Failure to do this may result in rejection of proposal.**

Please note the following changes/clarifications in regard to the above referenced RFP.

- Location map attached.

Q1 – In the IFB, it mentions the purchase. Will you be buying the panels and keeping them or will you be renting them for the season only?

A1 – Renting for the season only.

Q2 – The panels will require a firm flat surface. Will you be providing the firm flat surface or do we have to provide a sub surface? If we are installing on a grass area, will we have to plant the grass after the removal of the system or the grass issue is not applicable to this project?

A2 – Rink will be located in a parking lot (see map) in the 1300 block of Dunwoody Village Parkway. Contractor will have to provide any necessary sub surfacing.

Q3 – Will we add the decoration, lighting, generators...etc to our base bid or will these be additives?

A3 – Provide separate line item pricing for these.

Q4 – If you will be charging for the ice skating sessions, will you need a P.O.S (point of sale) system or just a standard cash register will be enough?

A4 – Standard cash register is sufficient.

Q5 – Will workers compensation and automobile insurance be required on this project?

A5 – Yes, if the contractor is supplying labor and/or using their own vehicles

Q6 – The time of bid is a little on the rush time, when will you be making a decision on who will be awarded the project?

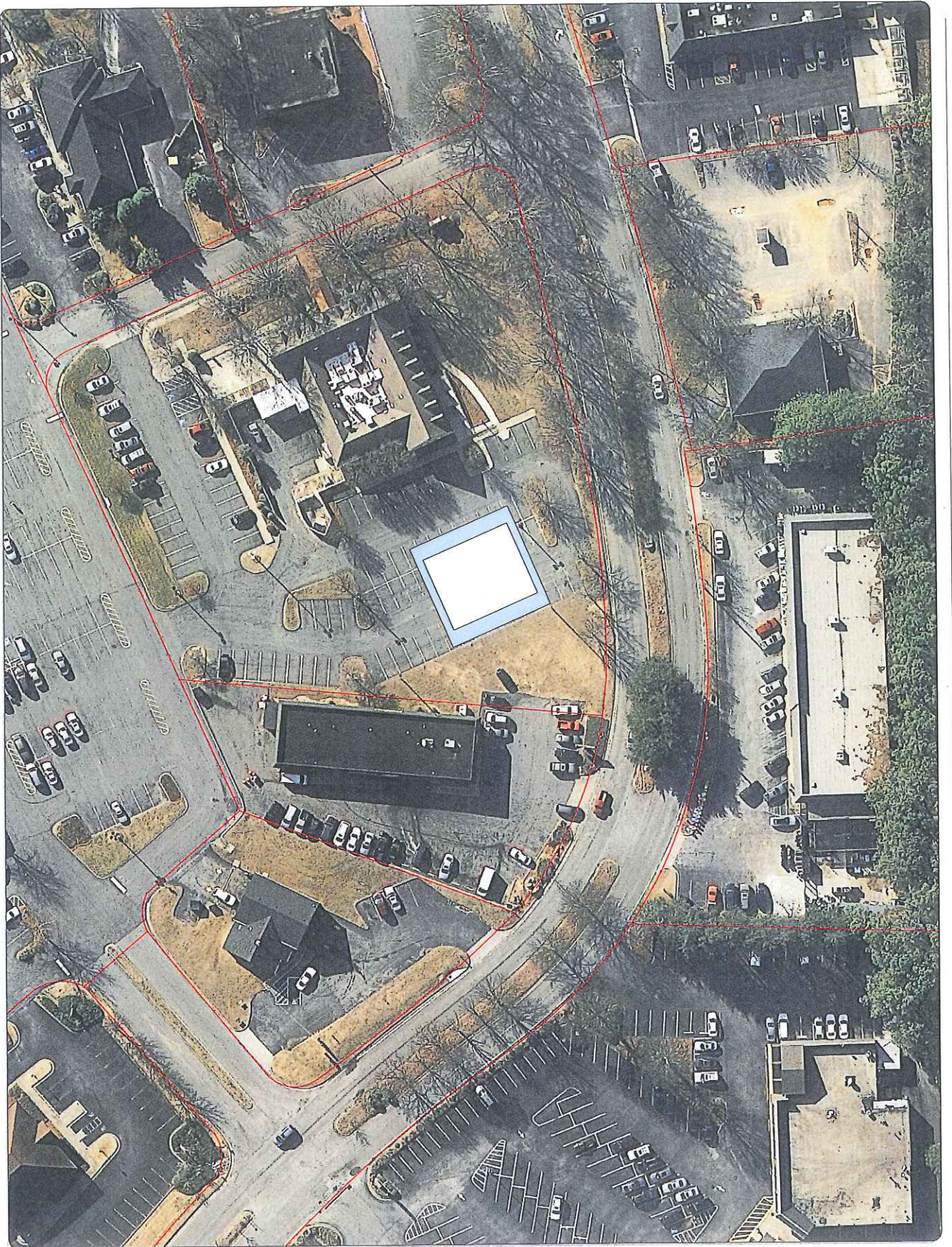
A6 – A decision will be made by October 26th.

Q7 - I do not see a price sheet included in the proposal form. Will be using our own pricing sheet?

A7 – Yes.

Q8 - The RFP does not include the map or dimensions. Please advise of the size.

A8 - Provide pricing on all sizes you supply.



Legend

- Parcels
- Ice Rink
- Ice
- Waiting Area

City Map

Dunwoody Village
Ice Skating Rink

10/7/2011

Dunwoody
Smart people - smart city
City of Dunwoody
Public Works
41 Parkway, Dunwoody, GA 30090
(770) 252-1234 • www.dunwoodyga.gov

Key Map

Scale: 1 inch = 25 feet

Map Editor: [Name]

Map Date: [Date]

Map Projection: [Projection]

Copyright © 2011 by the City of Dunwoody

All Rights Reserved