

MEMORANDUM

To: Mayor and City Council

From: David Elliott

Date: January 8, 2018

Subject: **4461 Orleans Drive funding approval for Stormwater Repairs.**

ITEM DESCRIPTION

Approval of funding for stormwater pipe repairs at 4461 Orleans Drive. Estimate for the culvert rehabilitation is \$63,719.77, which includes a 10% contingency.

BACKGROUND

Needed repairs were located while inspecting stormwater infrastructure at 4461 Orleans Drive. The repair will involve the rehabilitation of 274' of 24" corrugated metal pipe with cured in place pipe. The project will also involve internal pipe repairs and repairs to adjoining catch basins.

This project will be funded with the 2018 Stormwater Maintenance Budget.

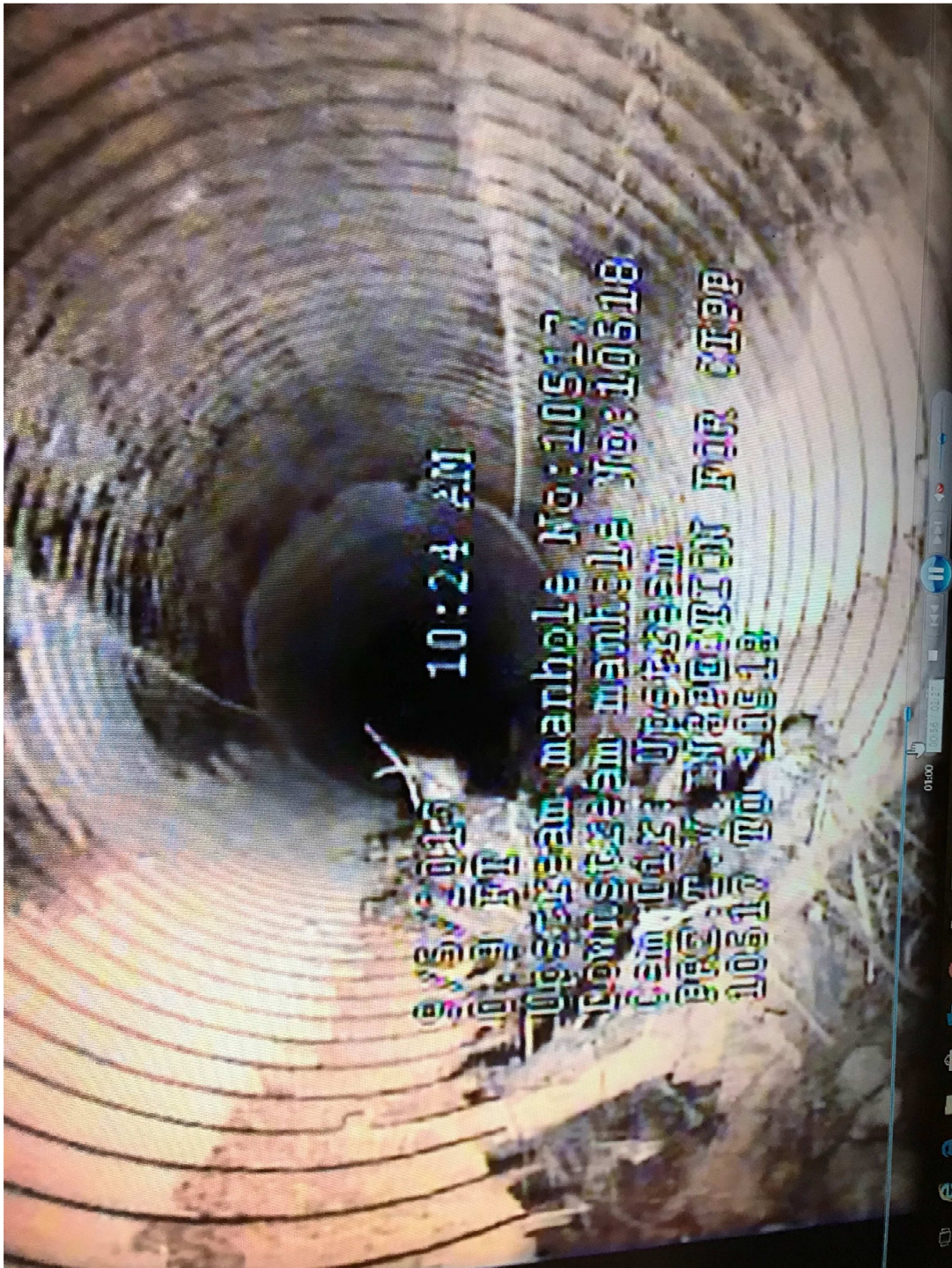
RECOMMENDED ACTION

Staff recommends approving \$63,719.77 in funding for Stormwater Culvert Repairs at 4461 Orleans Drive.

#H.9.



Deteriorated portions of 24" Corrugated Metal Pipe



Deteriorated portions of 24" Corrugated Metal Pipe

City of Dunwoody - Annual Stormwater CIPP Proposal - 4461 Orleans Drive 24" CIPP



Friday, September 15, 2017

ITEM	DESCRIPTION	UNIT	UNIT PRICE	QTY	EXTENDED PRICE
General Conditions					
1	Mobilization	EA	\$ 2,269.00	1	\$ 2,269.00
Traffic Control					
5	Traffic Control Minor (Two flagman, etc.)	DY	\$ 681.00	1.5	\$ 1,021.50
TV Inspection and Jet-Vac Cleaning					
7	TV Storm Lines (includes DVD & Report)	LF	\$ 5.00	274	\$ 1,370.00
Specialty Storm Line Cleaning, Applicable to heavy roots, Large diameter rocks, large debris, etc					
44	12" to 36" PIPE	LF	\$ 29.00	274	\$ 7,946.00
Flowable Paved Pipe Invert					
123	24" Diameter	LF	\$ 23.00	240	\$ 5,520.00
Internal Pipe Point Repairs (Including cutting, trimming, jacking, etc.)					
132	24" Diameter	LF	\$ 281.16	2	\$ 562.32
Grout Connection To Structure					
221	24" Grout Each End to Structure	EA	\$ 624.00	6	\$ 3,744.00
231	Grout all joint, cracks & holes, in structures, complete	EA	\$ 568.00	4	\$ 2,272.00
LINING REQUIREMENTS					
Cured In Place Pipe Liner (CIPP) - (12' or less in depth) Includes Pre & Post Television Inspections during lining					
236	24" PIPE- 10.0mm (.3937")	LF	\$ 101.97	274	\$ 27,939.78
Inversion Setup					
266	Inversion Setup Charge 15"- 36" CIPP	EA	\$ 1,684.98	2	\$ 3,369.96
Miscellaneous Items					
397	Debris Removal, Tandem Dump Truck	Per Load	\$ 171.00	1.5	\$ 256.50
410	6" Pumping Operation Time	HR	\$ 69.00	24	\$ 1,656.00
	10% Contingency				\$ 5,792.71
	Total				\$ 63,719.77