

**A RESOLUTION TO AUTHORIZE THE TRANSFER OF PROPERTY AND THE
ASSIGNMENT OF FACILITY USE AGREEMENTS FROM THE CITY OF
DUNWOODY TO THE CITY OF DUNWOODY PUBLIC FACILITIES AUTHORITY**

WHEREAS, the City of Dunwoody owns that certain property located at 5339 Chamblee Dunwoody Road, known as the North DeKalb Cultural Arts Center (hereinafter the "Arts Center") as set forth on the survey attached hereto as Exhibit "A" (hereinafter the "Property"); and

WHEREAS, the City of Dunwoody leases 11000 square feet of the Arts Center to the Spruill Center for the Arts (hereafter the "Spruill Center") as set forth on the illustration attached hereto as Exhibit "B" (hereinafter the "Spruill Center"); and

WHEREAS, the City of Dunwoody has entered into a Facilities Use Agreements for portions of the remainder of the Arts Center to the Stage Door Players and the Chattahoochee Handweavers Guild (hereafter the "Arts Users") as set forth on the illustrations attached hereto as Exhibit "C" and "D"; and

WHEREAS, the City of Dunwoody has entered into an Intergovernmental Agreement for a portion of the Arts Center to DeKalb County, Georgia (hereafter the "DeKalb County") as set forth in Exhibit "E" (hereinafter the "Library Area"); and

WHEREAS, the City desires for a portion of the Property to be held and administered by its Public Facilities Authority in order to improve the continued operation of the Property and enhance the opportunities venues for the Arts in the City; and

NOW THEREFORE BE IT RESOLVED by the Mayor and Council of the City of Dunwoody as follows:

1. The Property (less and except the Library Area) shall be transferred from the City to the Facilities Authority and the Mayor and City Manager are authorized to execute all necessary documents in furtherance of this transfer subject to the approval of the City Attorney; and
2. The City is hereby authorized to assign the Facilities Use Agreements with the Arts Users to the Public Facilities Authority and the Mayor and City Manager are authorized to execute all necessary documents in furtherance of this transfer subject to the approval of the City Attorney; and

**STATE OF GEORGIA
CITY OF DUNWOODY**

RESOLUTION 2019-XX-XX

SO RESOLVED this XX day of _____, 2019.

Approved:

Denis L. Shortal, Mayor

Attest:

Sharon Lowery, City Clerk
(Seal)

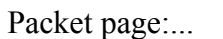


Exhibit B
Spruill Center for the Arts

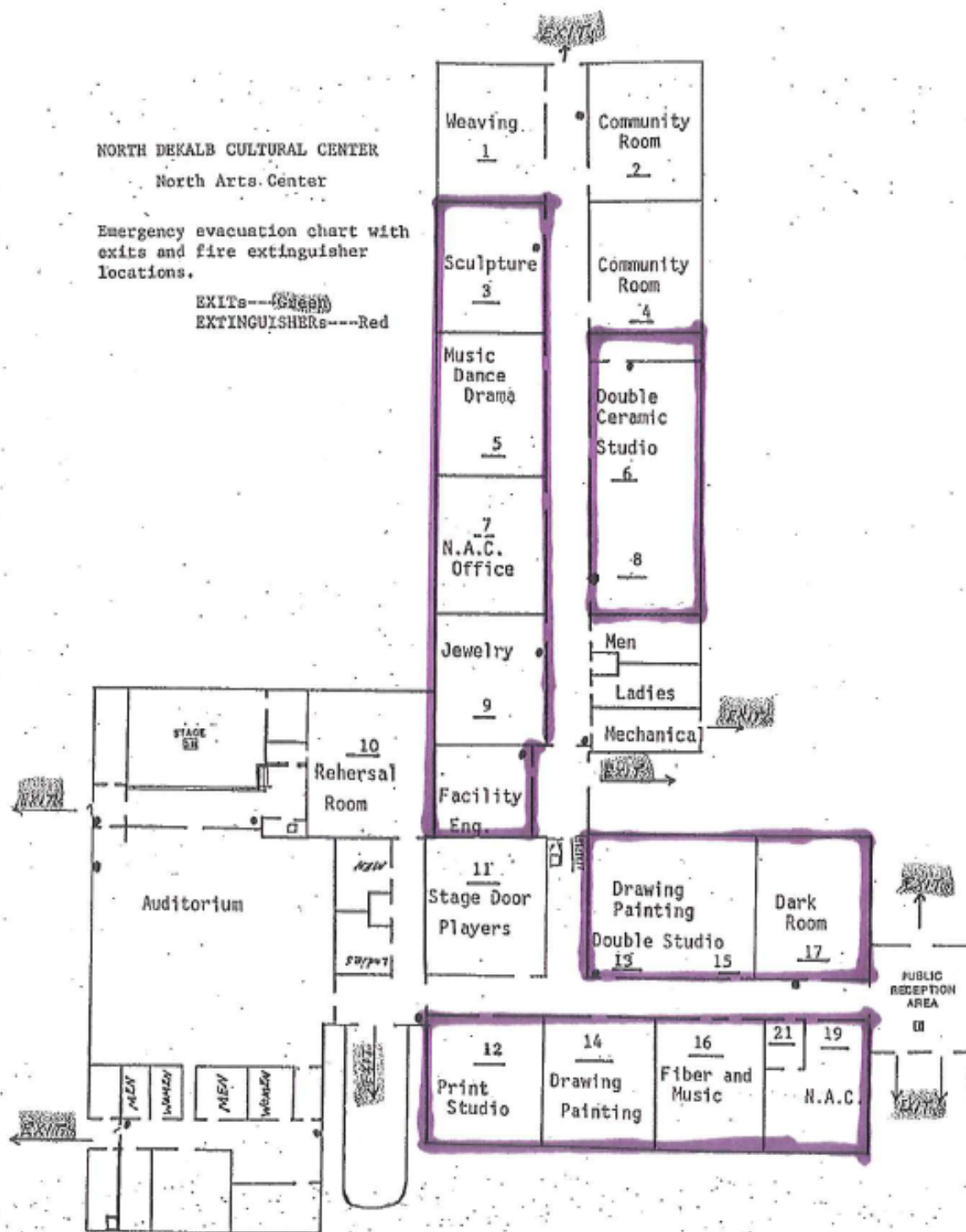
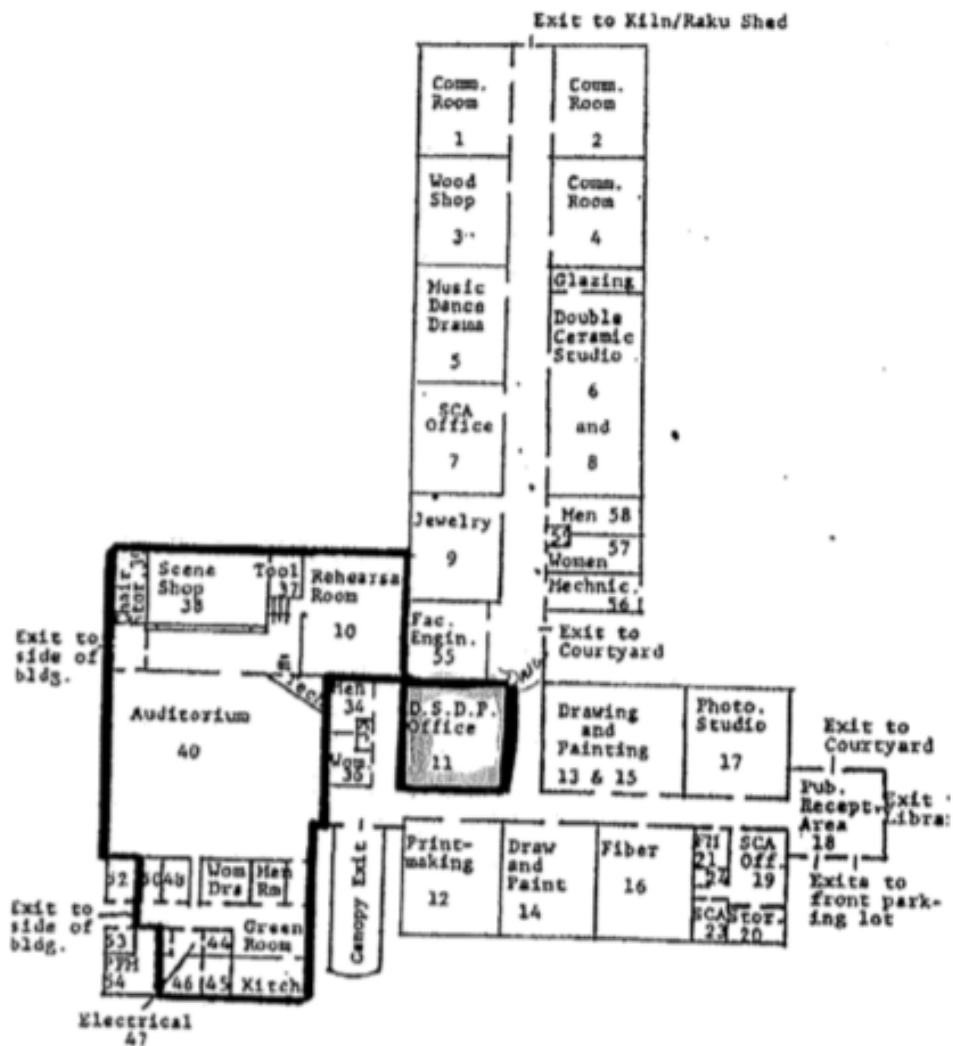


Exhibit C

Stage Door Players



DUNWOODY STAGE DOOR PLAYERS, INC.

Exhibit D

Chattahoochee Handweavers Guild

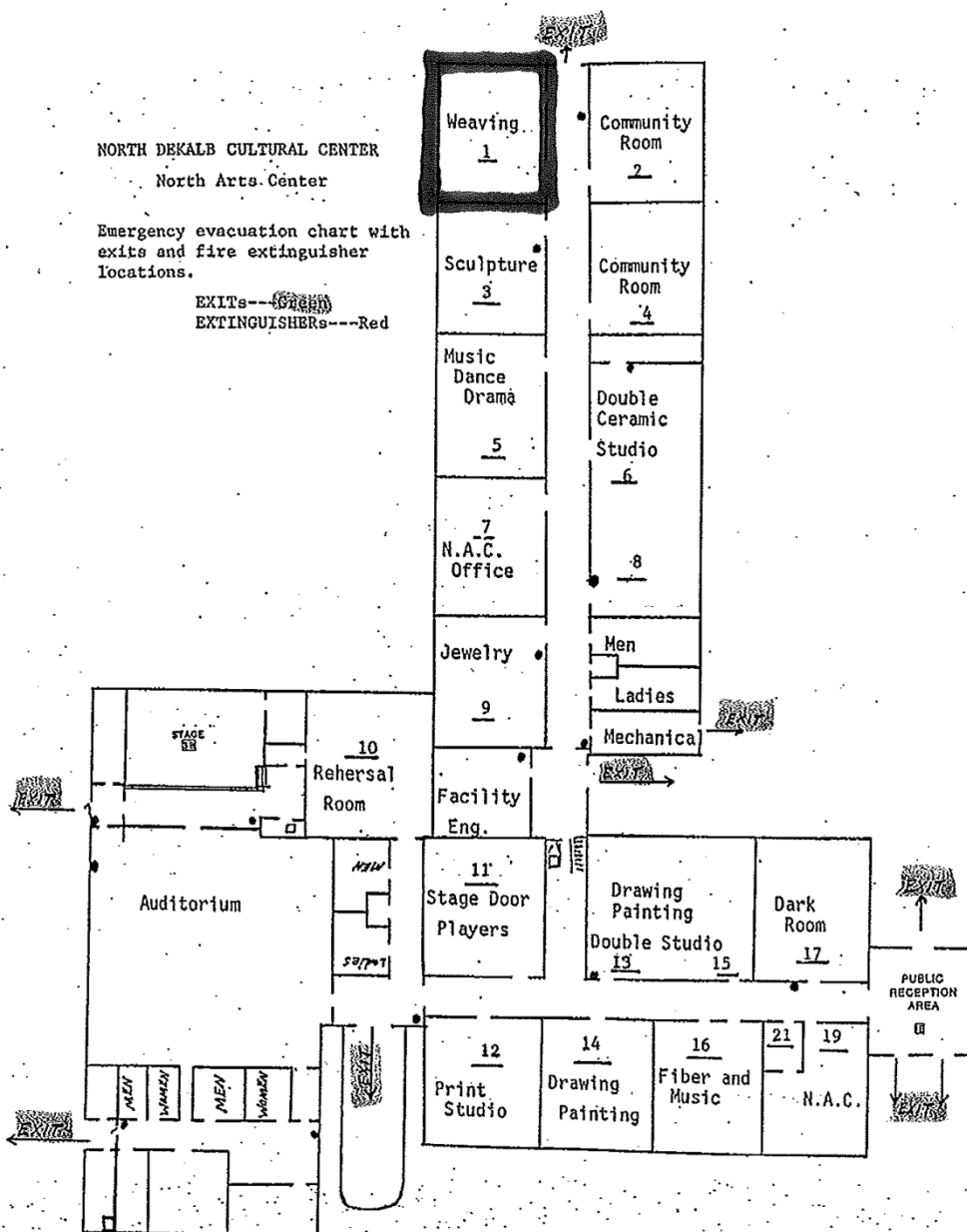


Exhibit EDeKalb County Library-Dunwoody Branch

ALL THAT PIECE PARCEL OR LOT OF LAND LYING AND BEING IN LAND LOT 336

OF THE 18TH DISTRICT,, DEKALB COUNTY GEORGIA,, AND HAVING THE FOLLOWING METES AND BOUNDS TO WIT:

COMMENCING AT A RIGHT-OF -WAY INTERSECTION BETWEEN THE NORTHERLY RIGHT - OF-WAY OF WOMACK ROAD (R/W VARIES) AND THE WESTERLY RIGHT -OF -WAY OF CHESTNUT RIDGE DRIVE (SB ' R/W),,, SAID RIGHT-OF -WAY INTERSECTION BEING

THE POINT-OF-COMMENCEMENT, (P.O.C.); THENCE CONTINUING ALONG THE

NORTHERLY RIGHT -OF -WAY OF WOMACK ROAD (R/W VARIES) 614 .BB ' TO A #4 REBAR FOUND AT SAID RIGHT -OF -WAY; THENCE TURNING AND CONTINUING SOUTH

22 DEGREES 04 MINUTES 38 SECONDS EAST (S22°B4 ,38"E) FOR A DISTANCE OF 16.32 ' TO AN OPEN TOP PIPE FOUND; THENCE CONTINUING ALONG THE

NORTHERLY RIGHT -OF -WAY OF WOMACK ROAD (R/W) VARIES NORTH 89 DEGREES 47 MINUTES 37 SECONDS WEST (N89°47 ' 37"W) FOR A DISTANCE OF 343 .72 ' TO A POINT ON THE NORTHEASTERLY RIGHT -OF -WAY OF CHAMBLEE DUNWOODY ROAD (R/W VARIES); THENCE TURNING AND LEAVING THE NORTHERLY RIGHT -OF -WAY OF WOMACK ROAD (R/W VARIES) AND CONTINUING ALONG THE NORTHEASTERLY RIGHT - OF-WAY CHAMBLEE DUNWOODY ROAD (R/W VARIES) AND ALONG THE ARC OF A

CURVE THAT DEFLECTS TO THE LEFT HAVING A RADIUS OF 1,,954. BB ' AND AN ARC LENGTH OF 13B.14 ' ,, SAID ARC BEING SUBTENDED BY A CHORD BEARING NORTH 36 DEGREES 16 MINUTES 42 SECONDS WEST (N36°16 '42"W) FOR A CHORD DISTANCE OF 13B.12 ' TO A POINT; THENCE TURNING AND CONTINUING ALONG SAID RIGHT -OF -WAY NORTH 45 DEGREES 41 MINUTES 21 SECONDS WEST (N45°41'21"W) FOR A DISTANCE OF 65 .22 ' TO A POINT; THENCE CONTINUING ALONG THE ARC OF A CURVE THAT DEFLECTS TO THE LEFT HAVING A RADIUS OF 2,, 287.34 ' AND AN ARC LENGTH OF 175.33 ' ,, SAID ARC BEING SUBTENDED BY A CHORD BEARING NORTH 42 DEGREES 3B MINUTES 43 SECONDS WEST

(N42°3B '43"W) FOR A CHORD DISTANCE OF 175.29 ' TO A POINT; THENCE TURNING AND LEAVING THE NORTHEASTERLY RIGHT -BF -WAY OF CHAMBLEE DUNWOODY ROAD (R/W VARIES) NORTH 57 DEGREES 31 MINUTES 52 SECONDS

WEST (N57°31' 52"W) FOR A DISTANCE OF 124 .71' TO A POINT,, SAID POINT BEING THE POINT-BF-BEGINNING, (P.O.B .);

FROM THE POINT-OF-BEGINNING (P.O.8.) THUS ESTABLISHED,, THENCE CONTINUING NORTH 57 DEGREES 31 MINUTES 52 SECONDS EAST (N57°31' 52 "E) FOR A DISTANCE OF 27.77 ' TO A POINT; THENCE TURNING AND CONTINUING SOUTH 32 DEGREES 18 MINUTES 47 SECONDS EAST (S32°18 ' 47"E) FOR A DISTANCE OF 12 .84 ' TO A POINT; THENCE TURNING AND CONTINUING NORTH 57 DEGREES 26 MINUTES 17 SECONDS EAST (N57°26 '17"E) FOR A DISTANCE OF 24.26 ' TO A POINT; THENCE TURNING AND CONTINUING SOUTH 32 DEGREES 31 MINUTES 56 SECONDS EAST (S32°31' 56" E) FOR A DISTANCE OF 35 . 58 ' TO

POINT; THENCE TURNING AND CONTINUING NORTH 57 DEGREES 30 MINUTES 15 SECONDS EAST (N57°30 '15" E) FOR A DISTANCE OF 157. 83 ' TO A POINT; THENCE TURNING AND CONTINUING SOUTH 32 DEGREES 33 MINUTES 02 SECONDS

EAST (S32°33 ' 02 "E) FOR A DISTANCE OF 75 .87 ' TO A POINT; THENCE TURNING AND CONTINUING SOUTH 58 DEGREES 53 MINUTES 16 SECONDS WEST

(S58°53 '16"W) FOR A DISTANCE OF 234. 06 ' TO A POINT; THENCE TURNING AND

CONTINUING NORTH 32 DEGREES 25 MINUTES 11 SECONDS WEST (N32°25 '11"W) FOR A DISTANCE OF 105 . 79 ' TO A POINT; THENCE TURNING AND CONTINUING NORTH 57 DEGREES 31 MINUTES 18 SECONDS EAST (N57°31 '18"E) FOR A DISTANCE OF 23 .97 ' TO A POINT; THENCE TURNING AND CONTINUING NORTH 32 DEGREES 28 MINUTES 42 SECONDS WEST (N32°28 '42"W) FOR A DISTANCE OF 12 .05 ' TO A POINT, SAID POINT BEING THE POINT -OF -BEGINNING, (P .0 .8 .) .

