

SCHOOL CHOICE PROGRAMS BROCHURE

2009-2010
DeKalb County School System



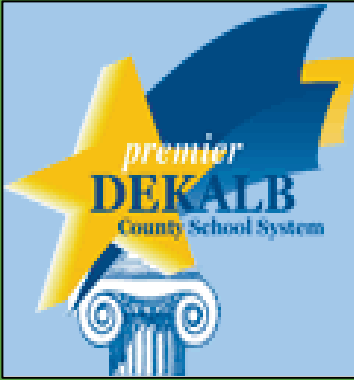
Open Enrollment

March 16, 2009 – April 3, 2009

Online Magnet Application available at <http://eportal.dekalb.k12.ga.us>
All School Choice Applications available at www.dekalb.k12.ga.us

S.C.O.R.E.S.

**School Choice Online Registration
&
Enrollment System**



DeKalb Board Of Education

Thomas E. Bowen, Chair
Zepora Roberts, Vice Chair
Sarah Copelin-Wood
Jesse "Jay" Cunningham, Jr.
Don McChesney
Jim Redovian
Dr. Pamela Speaks
Dr. Eugene Walker
H. Paul Womack

Mission

The mission of the DeKalb County School System is to form a collaborative effort between home and school that maximizes students' social and academic potential preparing them to compete in a global society.



Dr. Crawford Lewis, Superintendent

It is my privilege to serve as Superintendent of the DeKalb County School System, a premier learning community dedicated to providing all students with a quality education. Each year my staff and I plan educational programs for students in grades pre-kindergarten through twelve to continue to stimulate learning and produce greater levels of student achievement.

Each school year a broad range of programs are made available to students throughout the district. A School Choice Fair was held in January 2009 to provide a venue for parents, students and other stakeholders to learn about the different programs available to DeKalb County School District residents. Many of our schools provide system-wide and regional school choice options such as Magnet Programs, Montessori Schools, Charter Schools, DeKalb Early College Academy, International Baccalaureate Programs, McNair Discovery Learning Academy, the Coralwood/Hawthorne Partnership and Theme Schools. While enrollment is limited, thousands of students take advantage of these programs each school year.

This school year we are implementing an online application and an automated student selection process for our Theme and Magnet Programs. The School Choice Options brochure and applications will be available to parents March 2009. Our goal is to make the School Choice application process more accessible, efficient and manageable.

DeKalb County School System's priority is to provide an educational environment that ensures success for all students. The Board of Education, working collaboratively with the Superintendent, supports the following 2007-2010 goals for the DeKalb County School System.

GOALS 2007-2010

- 1.To narrow the achievement gap and improve the graduation rate by creating a high performance learning culture in all schools and sites.
- 2.To increase rigor and academic achievement in Reading/Language Arts, Mathematics, Science and Social Studies in pre-kindergarten -12.
- 3.To ensure quality personnel in all positions.
- 4.To ensure fiscal responsibility in order to maintain safe and healthy learning environments that support academic programs, resources and services.

SCHOOL CHOICE PROGRAMS

Table of Contents

Superintendent's Message	i
Table of Contents	ii
Magnet Programs Lottery /Tour Dates	iii
School Choice Student Selection Procedures	iv
Magnet Programs Guidelines and Expectations	v
Magnet Programs and Procedures	vi
DeKalb County School System Regions	Page 1
School Choice Programs Quick Look	Page 2
School Choice Programs Quick Look	Page 3
School Choice Programs Descriptions	Page 4
Chesnut Charter School Program	Page 5
Kingsley Charter School Program	Page 5
Peachtree Middle Charter School Program	Page 5
Chamblee High Charter School Program and Criteria for Continued Participation	Page 5
DeKalb Early College Academy (DECA)	Page 6
DeKalb Elementary School of the Arts Magnet Program (DESA)	Page 7
DeKalb School of the Arts Magnet Program (DSA)	Page 8
Evansdale Mathematics, Science, and World Language Magnet Program	Page 9
Clifton Mathematics, Science, and Computer Education Magnet Program	Page 10
Snapfinger Elementary School Mathematics, Science, and Technology	Page 11
Columbia Middle School Academy of Mathematics, Science, and Technology Magnet Program	Page 12
Columbia High Academy of Mathematics, Science, and Technology Magnet Program	Page 13
Wadsworth Magnet School for High Achievers	Page 14
Kittredge Magnet School for High Achievers	Page 14
Chamblee Middle School Magnet Program for High Achievers	Page 15
Chapel Hill Middle School Magnet Program for High Achievers	Page 15
Chamblee Charter High School Magnet Program for High Achievers	Page 16
Southwest DeKalb High School Magnet Program for High Achievers	Page 16
Briar Vista Elementary School Montessori Program	Page 17
Huntley Hills Elementary School Montessori Program	Page 17
Midway Elementary School Montessori Program	Page 17
Coralwood/Hawthorne Partnership	Page 18
Ronald E. McNair Discovery Learning Academy	Page 19
Avondale Elementary School International Baccalaureate Program	Page 20
Fernbank Elementary School International Baccalaureate Program	Page 20
Midvale Elementary School International Baccalaureate Program	Page 20
Shamrock Middle School International Baccalaureate Program	Page 21
Druid Hills High School International Baccalaureate Program	Page 22
Martin Luther King Jr. High School International Baccalaureate Program	Page 22
Tucker High School International Baccalaureate Program	Page 22
International Baccalaureate Program Sequence of Courses	Page 23
School Choice Applications	Page 24
Chesnut Charter School Program Application	Page 25
Kingsley Charter School Program Application	Page 26
Peachtree Middle Charter School Program Application	Page 27
Chamblee Charter High School Program Application	Page 28
Magnet Programs Application	Page 29
Montessori Programs Application	Page 30
Coralwood/Hawthorne Partnership Program Application	Page 31
Ronald E. McNair Discovery Learning Academy	Page 32
Avondale/Fernbank/Midvale Primary Years International Baccalaureate Programs Application	Page 33
Shamrock Middle School Middle Years International Baccalaureate Program Application	Page 34
Druid Hills/Tucker International Baccalaureate Programs Application	Page 35
Martin Luther King Jr. International Baccalaureate Program Application	Page 36

DeKalb County School System School Choice Programs Lottery Dates

Thursday, May 14, 2009 at 2:00 p.m.

Chesnut Charter Elementary School
Kingsley Charter Elementary School
Peachtree Charter Middle School
Chamblee Charter High School

Tuesday, May 19, 2009 at 2:00 p.m.

Briar Vista Montessori School
Midway Montessori School
Huntley Hills Montessori School
Coralwood/Hawthorne Partnership
Ronald E. McNair Discovery Learning Academy

Thursday, May 21, 2009 at 2:00 p.m.

Clifton Mathematics, Science and Computer Education
Evansdale Mathematics, Science and World Language
Snapfinger Mathematic, Science and Technology
Columbia Middle School Academy of Mathematics, Science and Technology
Columbia High Academy of Mathematics, Science and Technology
DeKalb Elementary School of the Arts at Hooper Alexander

Tuesday, May 26, 2009 at 2:00 p.m.

Fernbank Elementary School International Baccalaureate Programme
Avondale Elementary School International Baccalaureate Programme
Midvale Elementary School International Baccalaureate Programme
Shamrock Middle School International Baccalaureate Programme

Tuesday, June 2, 2009 at 2:00 p.m.

Kittredge Magnet School for High Achievers
Wadsworth Magnet School for High Achievers
Chamblee Middle School Magnet Program for High Achievers
Chapel Hill Middle School Magnet Program for High Achievers
Southwest DeKalb High School Magnet Program for High Achievers
Chamblee Charter High School Magnet Program for High Achievers

All lottery sessions will begin at 2:00 p.m. at the William Bradley Bryant Technology Center located at 2652 Lawrenceville Highway, Decatur, Georgia 30033.

Alternate Lottery dates will be held on June 15, 2009, July 15, 2009 and August 3, 2009.

DeKalb County School System Magnet Programs Tour Dates

Clifton Mathematics, Science, and Computer Education

March 19-20, 2009 at 8:00 a.m. and 12:30 p.m.
March 23-24, 2009 at 8:00 a.m. and 12:30 p.m.

Evansdale Mathematics, Science, and World Language

March 17, 2009 at 9:00 a.m. and 1:00 p.m.
March 25, 2009 at 9:00 a.m. and 1:00 p.m.

Columbia Middle School Academy of Math, Science, and Technology

April 28, 2009 at 5:00 p.m.
April 30, 2009 at 5:00 p.m.

Columbia High School Academy of Math, Science, and Technology

March 23, 2009 at 9:00 a.m.
March 26, 2009 at 1:00 p.m.

Wadsworth Magnet School for High Achievers

March 10, 17, 24, & 3, 2009 at 10:00 a.m.

Chapel Hill Middle School Magnet Program for High Achievers

March 30, 2009 at 9:00 a.m.

Southwest DeKalb High School Magnet Program for High Achievers

March 18, 2009 at 9:00 a.m.
March 20, 2009 at 9:00 a.m.

Kittredge Magnet School for High Achievers

March 5, 2009 at 10:00 a.m.
March 12, 2009 at 10:00 a.m.
Please call the school to schedule a tour.

Chamblee Middle School Magnet Program for High Achievers

March 19, 2009 at 9:00 a.m.

Chamblee Charter High School Magnet Program for High Achievers

March 16, 2009 at 9:00 a.m.
March 17, 2009 at 9:00 a.m.

DeKalb Elementary School of the Arts at Hooper Alexander

March 23, 2009 at 9:00 a.m.
March 24, 2009 at 9:00 a.m.

Please see individual school/program descriptions for school locations and telephone numbers.

School Choice Programs Student Selection Procedures

Clifton, Evansdale, Snapfinger, Chamblee Middle School, Columbia Middle School, Chapel Hill Middle School, Chamblee Charter High School, Columbia High School, and Southwest DeKalb High School
An effort is made to give the home school magnet site the opportunity to have 50% of the total magnet program enrollment selected from its home pool. The other 50% will be selected from a county at-large pool. Additional students not selected will be wait listed per grade level.

DeKalb Elementary School of the Arts (DESA) at Hooper Alexander

Students rising to grades kindergarten through third will be selected from an at-large pool of applicants. Additional kindergarten through third grade applicants not selected will be wait listed from the at-large pool. New applicants rising to grades four through seven will audition for placement. Additional fourth through seventh grade applicants not selected will be wait listed based on their audition ranking.

DeKalb School of the Arts (DSA) High School

Students rising to grades 8 through 12 are required to complete and submit the applications with current transcripts and recommendation forms attached to DSA. A successful audition (in two performing arts areas) is also required. DSA applications will be available in locals schools January 19 – March 27, 2009. The application is not available in this brochure.

Kittredge/Wadsworth

Rising fourth graders will be selected by conducting a school-by-school lottery. This means each elementary school with eligible applicants will have at least one student selected from its pool of applicants. All private and home school students will represent a "school" and at least one student will be selected from the pool of applicant per grade per program. Additional eligible fourth grade students may be considered for a second at-large drawing if seats are available after the initial selections. Fourth grade students not selected will be wait listed. Fifth and sixth grade students will be selected from an at-large pool of applicants. Additional fifth and sixth grade applicants not selected will be wait listed from the at-large pool.

Magnet Programs

DeKalb County School System continues to provide solid academic programs for children to achieve individual excellence. The magnet programs offer students experiences beyond the traditional classroom settings. The magnet programs are the means through which DeKalb provides the bonus of quality education with a special focus. DeKalb offers a number of outstanding magnet programs. These options allow participants to explore and develop special skills. Because your child's education is a priority, DeKalb invites you to visit its magnet programs. See for yourself the ample supply of computer resources and the exciting world language labs in action. Meet with the dedicated professionals who staff the advanced math and science programs. We believe that you will discover DeKalb is indeed the system that offers educational options.

Regional School Choice Programs (International Baccalaureate, Discovery Learning, Coralwood/Hawthorne)

An effort is made to give the home school regional school choice site the opportunity to enroll all eligible students prior to other students in the region receiving placement. Students applying for a Regional School Choice Program (RSCP) and living in the same region of the specific program will receive priority, if seats are available after all qualified home school students have been placed. All other seats will be available to eligible students within the DeKalb County School System through a random lottery selection process. **Transportation will not be provided for students.**

Transfers

Magnet programs do not honor transfers. All students must apply and be selected to enroll in a program.

Transportation

The most current DeKalb County transportation policy will be followed for the school choice programs. During the 2009-2010 school year, students will report to designated satellite pickup locations in their region for transportation to all magnet programs/schools.

Magnet Programs Guidelines and Expectations

1. Parental involvement is at the thrust of student achievement. DeKalb schools strongly encourage parents to complete volunteer hours to support the students, staff, school, and local communities.
2. Elementary students who apply for the magnet programs for high achievers must have a fall 3.0 (or higher) grade point average (GPA) in the core subjects. DeKalb students rising to grades 4 - 6 must also earn a 75th percentile (or higher) total reading score, 75th percentile (or higher) total math w/computation score, and an 85th percentile (or higher) complete composite score on the fall 2008-2009 Iowa Tests of Basic Skills (ITBS). All students not enrolled in a DeKalb school must also earn a 75th percentile (or higher) total reading score, 75th percentile (or higher) total math w/computation score, and an 85th percentile (or higher) complete composite score on a 2008-2009 standardized test. Elementary students enrolled in the magnet programs for high achievers must maintain a 3.0 (or higher) grade point average (GPA) in the core subjects throughout the program each year. Students who do not maintain the academic performance criteria are placed on probation for one semester. Support plans will be provided for any student who has a GPA below the academic performance criteria throughout the probationary period. Students who do not have a 3.0 GPA after two consecutive grading periods or two semesters, must exit the magnet program and enroll at their home schools. **If a student does not meet promotion criteria during any term of the school year, the student will immediately be withdrawn from the magnet program and returned to the home school.**
3. Middle and high school students who apply for the magnet programs for high achievers must have a fall 3.0 (or higher) grade point average (GPA) in the core subjects. DeKalb students rising to grades 7-9 must also earn a 75th percentile (or higher) total reading score, 75th percentile (or higher) total math w/computation score, and an 85th percentile (or higher) complete composite score on the fall 2008-2009 Iowa Tests of Basic Skills. All students not enrolled in a DeKalb school must also earn a 75th percentile (or higher) total reading score, 75th percentile (or higher) total math w/computation score, and an 85th percentile (or higher) complete composite score on a 2008-2009 standardized test. Students applying for the high school high achievers programs must also successfully complete grade level prerequisite courses. Middle and high school students enrolled in the magnet programs for high achievers must maintain an overall numerical core average of 80, a numerical grade of 71 in all core subjects, and meet the promotion criteria each semester. Students who do not maintain the academic performance criteria are placed on probation for one semester. Support plans will be provided for any student who does not meet the academic performance criteria. Students who do not maintain an overall numerical core average of 80, a numerical grade of 71 in all core subjects, and do not meet the promotion criteria each semester for two consecutive semesters, must exit the magnet program and enroll at their home schools. **If a student does not meet promotion criteria during any term of the school year, the student will immediately be withdrawn from the magnet program and returned to the home school.**
4. Elementary students who apply for special interest magnet programs (i.e. math, science, performing arts, computer education, etc.) must have a fall 3.0 (or higher) grade point average (GPA) in the core subjects. Prekindergarten and kindergarten students do not have to meet the entrance criteria. All elementary students who are enrolled in special interest programs must maintain a 3.0 (or higher) GPA throughout the academic year. Students who do not maintain the academic performance criteria are placed on probation for one semester. Support plans will be provided for each student who has a GPA below 3.0 throughout the probationary period. Students who do not maintain a 3.0 GPA at the end of two consecutive grading periods or two semesters, must exit the magnet program and enroll at their home school. **If a student does not meet promotion criteria during any term of the school year, the student will immediately be withdrawn from the magnet program and returned to the home school.**
5. Middle and high school students who apply for the special interest magnet programs (i.e. math, science, performing arts, etc.) must have a fall 3.0 (or higher) grade point average (GPA) in the core subjects. All middle and high school students who are enrolled in special interest programs must maintain an overall numerical core average of 80, a numerical grade of 71 in all core subjects, and meet the promotion criteria throughout the academic year. Students who do not maintain the academic performance criteria are placed on probation for one semester. Support plans will be provided for any student who does not meet the academic performance criteria. Students who do not maintain an overall numerical core average of 80, a numerical grade of 71 in all core subjects, and do not meet the promotion criteria at the end of two consecutive grading periods, or two semesters, must exit the magnet program and enroll at their home school. **If a student does not meet promotion criteria during any term of the school year, the student will immediately be withdrawn from the magnet program and returned to the home school.**
6. Students (grades 4-12) who apply for the special interest magnet program at Hooper Alexander and the DeKalb School of the Arts must have a 3.0 (B) or higher grade point average (GPA). Students must also submit a completed application with an official current transcript attached, two confidential academic recommendation forms, two arts recommendation forms, audition in two arts disciplines, and be interviewed by the audition panel.
7. All students who are enrolled in the DeKalb School of the Arts (grades 8 – 12) must maintain an overall numerical core average of 80, a numerical grade of 71 in all subjects, and meet the promotion criteria throughout the academic year. Students who do not maintain the academic performance criteria are placed on probation for one semester. Support plans will be provided for each student who has an overall numerical core average below 80 and/or a subject average below 71 throughout the probationary period. Students who do not maintain an overall numerical average of 80, a numerical grade of 71 in all subjects, and do not meet the promotion criteria at the end of two consecutive grading periods, or two semesters, must exit the magnet program and enroll at their home school. Students are also required to complete two performance credits each school year. **If a student does not meet promotion criteria during any term of the school year, the student will immediately be withdrawn from the magnet program and returned to the home school.**
8. Students enrolled in a Magnet Program must complete the required magnet courses to earn magnet credit or the Magnet Program diploma seal.
9. There is no sibling clause in the magnet program. However, if a student is selected for a magnet program and he/she is a child of a multiple birth, the sibling (s) of the multiple birth may attend, provided that the child/children meet (s) the selection criteria.
10. **When a magnet student placement is available and the placement is declined, the student will not be able to apply for placement in a magnet program until the next open selection/lottery period (Spring 2010).**
11. **Vacancies will not be filled after October 16, 2009.**
12. **Reminder: Magnet and School Choice Applications deadline is April 3, 2009.**

MAGNET PROGRAMS AND PROCEDURES

PARENTS WILL ONLY RECEIVE A LETTER OF ACCEPTANCE IF THEIR STUDENTS ARE SELECTED TO ATTEND A MAGNET PROGRAM FOR THE 2009-2010 SCHOOL YEAR.

Application Process

All applicants of magnet and all other school choice programs listed in this brochure must reside in the DeKalb County School District and meet the specific criteria for each program to participate in the application process and lottery. **The grade levels of each 2009-2010 magnet program and the required eligibility criteria should be carefully noted. Applicants who previously applied, but were not accepted into a magnet program, must reapply.**

Late Applications

All students applying after April 3, 2009 (including students new to DeKalb County School System) will be considered only if the number of applicants does not exceed the number of student replacements.

Transportation

The most current DeKalb County transportation policy will be followed for the magnet programs/schools. During the 2009-2010 school year, students will report to designated satellite pickup locations in their region for transportation to all magnet programs/schools.

Student Selection and Enrollment Guidelines

Home-school applicants are categorized as students enrolled at the magnet site, and students for whom the magnet site is their feeder school during the time of application. At-large applicants are categorized as students not enrolled at the magnet site, and students for whom the magnet site is not a feeder school. Private and home school students are also categorized as at-large applicants.

Deadline

Applications are accepted at the Magnet and Theme Schools Office, the William Bradley Bryant Technology Center located at 2652 Lawrenceville Highway, Decatur, Georgia 30033, or by mail. **Faxed applications and supporting documentation will not be accepted. The deadline for returning applications is April 3, 2009.**

Selection/Lottery Procedures

If the number of applications exceeds the projected number of open seats for any or all magnet programs, a lottery (random drawing) open to the public will be conducted at the William Bradley Bryant Technology Center located at 2652 Lawrenceville Highway, Decatur, Georgia 30033. The projected lottery dates are listed on page iii. Visit the DeKalb County School System Website for Magnet Program lottery dates, times, and locations.

**Magnet and School Choice Applications Deadline
April 3, 2009**

Please note: Private and home-school applicants are at-large applicants. Private and home-school applicants must attach and submit a copy of the most recent 2008-2009 report card with the student's application.

A copy of the student's 2008-2009 standardized test scores must also be attached to the student's application if applying for a High Achievers Magnet Program.

Return applications and supporting documentation to the DeKalb County public school in the local area or the Magnet/Theme Schools Office by **April 3, 2009.**

Magnet Program Selection

If desired, applicants may elect to apply for two programs on the application, a first and second choice. **The second choice will be considered only if openings remain after the initial lottery (random drawing).**

Programs Requiring Standardized Test Scores for Eligibility

Wadsworth, Kittredge, Chapel Hill Middle, Chamblee Middle, Southwest DeKalb, and Chamblee Charter High, require eligible standardized test scores for eligibility requirements. (Review program description for other criteria.)

Acceptable Standardized Tests (current 2008-2009)

California Achievement Test, Iowa Tests of Basic Skills
Metropolitan Achievement Test, Stanford Achievement Test

Please note: Private and home-school applicants must provide test scores prior to May 1, 2009 to be eligible for the lottery (random drawing).

Classification of Magnet Programs

There are two types of magnet programs: (1) special interest magnets and (2) high achievers magnets. The schools in each category are:

Special Interest Magnet Programs

DeKalb Elementary School of the Arts (Hooper Alexander)
DeKalb School of the Arts High School
Clifton - Mathematics, Science, and Computer Education
Evansdale - Mathematics, Science, and World Language
Snapfinger - Mathematics, Science, and Technology
Columbia Middle - Mathematics, Science, and Technology
Columbia High - Mathematics, Science, and Technology

Magnet Programs for High Achievers

Wadsworth, Chapel Hill Middle, Southwest DeKalb
Kittredge, Chamblee Middle, Chamblee Charter High

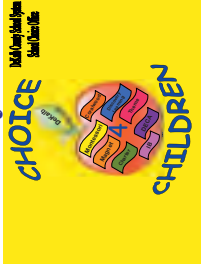
Lottery Dates: See page iii.

Alternate Lottery Dates: June 15, July 15, August 3, 2009

2008-2009 DeKalb County School System Vertical Alignment

Region 1	Region 2	Region 3	Region 4	Region 5	Region 6
Chamblee HS	Avondale HS	Clarkston HS	Cedar Grove HS	MLK HS	Redan HS
Chamblee MS	Avondale MS	Freedom MS	Cedar Grove MS	Salem MS	Redan MS
Ashford Park ES	Avondale ES	Allgood ES	Cedar Grove ES	E. L. Bouie ES	E. L. Miller ES
Huntley Hills ES	Knollwood ES	Dunaire ES	Narvie Harris ES	Browns Mill ES	Shadow Rock ES
Montgomery ES	Midway ES	Indian Creek ES	Oak View ES	Murphey Candler ES	
	Robert Shaw ES	Jolly ES		Fairington ES	
				Flat Rock ES	
Cross Keys HS	Druid Hills HS	Columbia HS	McNair HS	Lithonia HS	Stephenson HS
Sequoyah MS	Shamrock MS	Columbia MS	McNair MS	Lithonia MS	Stephenson MS
Dresden ES	Briar Vista ES	Columbia ES	Clifton ES	Marbut ES	Pine Ridge ES
Montclair ES	Fernbank ES	Kelley Lake ES	Flat Shoals ES	Redan ES	Princeton ES
Oakcliff ES	Laurel Ridge ES	Snapfinger ES	Gresham Park ES	Stoneview ES	Rock Chapel ES
Gary Reynolds ES	McLendon ES	Toney ES	Meadowview ES		Wynbrooke ES
Woodward ES	Medlock ES		McNair ES Dis. Ac.		
	Sagamore Hills ES		Sky Haven ES		
Dunwoody HS	Lakeside HS	Towers HS	SWDHS	Miller Grove HS	Stone Mountain HS
Peachtree MS	Henderson MS	Bethune MS	Chapel Hill MS	Miller Grove MS	Stone Mountain MS
Austin ES	Briarlake ES	Atherton ES	Chapel Hill ES	Panola Way ES	Champion MS
Chesnut ES	Evansdale ES	Canby Lane ES.	Bob Mathis ES	Woodridge ES	Hambrick ES
Hightower ES	Hawthorne ES	Glen Haven ES	Rainbow ES	DHST-S	Rockbridge ES
Kingsley ES	Henderson Mill ES	Peachcrest ES			Stone Mill ES
Vanderlyn ES	Oak Grove ES	Rowland ES	DESA*	Arabia Mtn. HS	Stone Mountain ES
DHST-N	Pleasantdale ES		DeKalb Transition**	DOLA*	
		DSA*	Destiny Academy**		DeKalb Alternative**
Kittredge*		Open Campus **			Night Alternative**
International Center**	Tucker HS				DeKalb Truancy**
Warren Tech**	Tucker MS		Wadsworth Magnet		
	Brockett ES				
	Idlewood ES				
	Livsey ES				
	Midvale ES				
	Smoke Rise ES				
	DECA*				
	Gateway to College**				

DeKalb County School System



SCHOOL CHOICE PROGRAMS 2009-2010

SCHOOL	Program Grades Served	Type of Programs					Core GPA Required	Test Scores Required	Prerequisite Courses	Audition (A) Or Interview (I)	Recommendations	Transportation	Parental Service Hours/Uniforms
		World Language	Montessori	Theme	Coralwood/Hawthorne	Discovery Learning							
BRIAR VISTA ES	K-5	X					NO	YES	NO	NO	NO	NO/NO	
HUNTLEY HILLS ES	K-5	X					NO	YES	NO	NO	NO	NO/NO	
MIDWAY ES	K-5	X					NO	YES	NO	NO	NO	NO/NO	
E.L. BOUIE, SR ES	Pre-K-5	X	X				NO	NO	NO	NO	YES	YES/YES	
MARBUT ES	Pre-K-5	X	X				NO	NO	NO	NO	YES	YES/YES	
NARVIE J. HARRIS ES	Pre-K-5	X	X				NO	NO	NO	NO	YES	YES/YES	
OAKCLIFF ES	Pre-K-5	X	X				NO	NO	NO	NO	YES	YES/YES	
ROBERT SHAW ES	Pre-K-5	X	X				NO	NO	NO	NO	YES	YES/YES	
WYNBROOKE ES	Pre-K-5	X	X				NO	NO	NO	NO	YES	YES/YES	
CHAMPION MS	6, 7, 8	X	X				NO	NO	NO	NO	YES	YES/YES	
Coralwood Diagnostic Center	Preschool-K (3 yrs-6 yrs)			X			NO	NO	NO	NO	NO	NO/NO	
McNair Discovery	K-5	X			X		NO	NO	NO	NO	NO	NO/NO	
DRUID HILLS HS	9-12	X				X	3.2	YES	YES (I)	YES	NO	NO/NO	
M. L. King JR. HS	9-12	X				X	3.2	YES	YES (I)	YES	NO	NO/NO	
TUCKER HS	9-12	X				X	3.2	YES	YES (I)	YES	NO	NO/NO	
SHAMROCK MS	6-8	X				X	NO	NO	NO	NO	NO	NO/NO	
AVONDALE ES	K-5	X				X	NO	NO	NO	NO	NO	NO/NO	
FERNBANK ES	K-5	X				X	NO	NO	NO	NO	NO	NO/NO	
MIDVALE ES	K-5	X				X	NO	NO	NO	NO	NO	NO/NO	

DeKalb County School System

SCHOOL CHOICE PROGRAMS

2009-2010



SCHOOL	Program Grades Served	Type of Programs						Core GPA Required	Test Scores Required	Prerequisite Courses	Audition (A) Or Interview (I)	Recommendations	Transportation Provided	Parental Service Hours/Uniforms
		Joint Enrollment	Performing Arts	Computer Tech	Math/Science	World Language	Charter							
WADSWORTHES	4, 5, 6				X		X	YES	NO	NO	NO	YES	NO/NO	
CLIFTON ES	3, 4, 5			X	X			NO	NO	NO	NO	YES	NO/NO	
DEKALB SCHOOL OF THE ARTS ES	K-7	X						NO	NO	4, 5, 6, 7 ONLY (A)	YES ARTS/ACADEMIC	YES	NO/NO	
EVANSDALE ES	K-5				X		X	NO	NO	NO	NO	YES	NO/NO	
KITTRIDGE ES	4, 5, 6				X		X	YES	NO	NO	NO	YES	NO/NO	
CHAMBLEE MS	7, 8				X		X	YES	NO	NO	NO	YES	NO/NO	
CHAPEL HILL MS	7, 8				X		X	YES	NO	NO	NO	YES	NO/NO	
COLUMBIA MS	6, 7, 8			X	X		X	NO	NO	NO	NO	YES	NO/NO	
CHAMBLEE HS	9-12				X		X	8 th grade	YES	NO	NO	YES	NO/NO	
COLUMBIA HS	9-12			X	X			NO	YES	NO	NO	YES	NO/NO	
DEKALB SCHOOL OF THE ARTS HS	8-12		X				X	NO	YES	YES (A/I)	YES ARTS/ACADEMIC	YES	NO/NO	
SOUTHWEST DEKALB HS	9-12				X		X	8 th grade	YES	NO	NO	YES	NO/NO	
CHESNUT ES	K-3					X		NO	NO	NO	NO	NO	NO/NO	
KINGSLEY ES	K-5				X		X	NO	NO	NO	NO	NO	NO/NO	
PEACHTREE MS	6, 7, 8				X		X	NO	NO	NO	NO	NO	NO/NO	
CHAMBLEE HS	9-12				X		X	NO	NO	NO	NO	NO	NO/NO	
DeKalb Early College Academy	9-12	X			X			YES	NO	YES (I)	YES Counselor/Academic	YES	10 HOURS YES	

2009-2010

School Choice Program Descriptions

System-wide Options

Charter

DeKalb Early College Academy

Magnet Programs (Special Interest)

Magnet Programs (High Achievers)

Montessori

Regional School Choice Options

Coralwood/Hawthorne Partnership

Discovery Learning

International Baccalaureate

Conversion Charter School Programs

CHESNUT CHARTER ELEMENTARY SCHOOL

4576 N. Peachtree Road, Dunwoody, Georgia 30338
678-676-7100 (Information) 678-676-7102 (Office)
678-676-7110 (Fax) **Grades:** K - 3

KINGSLEY CHARTER ELEMENTARY SCHOOL

2051 Brendon Drive, Dunwoody, Georgia 30338
678-874-8900 (Information) 678-874-8902 (Office)
678-874-8910 (Fax) **Grades:** Pre-K - 5

PEACHTREE CHARTER MIDDLE SCHOOL

4664 North Peachtree Road, Atlanta, Georgia 30338
676-7700 (Information) 678-676-7702 (Office)
678-676-7710 (Fax) **Grades:** 6 - 8

CHAMBLEE CHARTER HIGH SCHOOL

3688 Chamblee-Dunwoody Road, Chamblee, Georgia 30341
678-676-6902 (Office)
678-676-6910 (Fax) **Grades:** 9 -12

The Georgia Charter Schools Law provides the means to seek a performance-based charter which ties improved performance to the waiver of specific exemptions approved by both the state and local boards of education. The contract may exempt the school from certain state and local rules, regulations, policies and procedures and from certain provisions of Title 20 of Georgia law. The contact for charter schools is Ms. Nicole Knighten at 678-676-0713. DeKalb County School System, as a part of the 2009-2010 School Choice option, would like to provide parents with the opportunity to consider the Charter School option. The Charter School option provides environments that foster excellence by delivering instructional programs that enhance the social, moral, and physical growth of every student. The classroom climate supports learning by providing a caring, safe and enriching environment. Higher order thinking skills are developed through a rigorous and challenging curriculum. Students participate in cooperative learning activities. These programs encourage intellectual curiosity, dress for success guidelines, parental involvement, and structured conduct guidelines. Students who live outside of the attendance area of the charter school are transported to and from school by their parents each day.

DeKalb schools that have received Charter status will select students for placement for the 2009-2010 school year through the lottery (random selection) process. At the time of publication, the exact number of openings is still to be determined. Please be advised that there may be limited or no openings for particular programs and/or grade levels. You may apply for the student selection process by completing and returning the appropriate application. Please mail, fax or deliver the application to the charter of school choice by the school's assigned deadline.

Web site:www.dekalb.k12.ga.us/about/schoolchoice/charter.html

CHAMBLEE CHARTER HIGH SCHOOL (CCHS)

Criteria for Continued Attendance

The mission of Chamblee Charter High School (CCHS) is to foster excellence by promoting the intellectual, social, moral and physical growth of every student.

SPECIAL PERMISSION/APPEALS SUBCOMMITTEE

Chamblee Charter High School Governance Council

Attendance:

Students attending CCHS by special permission must meet the attendance requirements as specified by Georgia law and the DeKalb County Student Code of Conduct Handbook.

Behavior:

Students attending CCHS must comply with the **DeKalb County School System (DCSS) Code of Conduct Handbook and the CCHS Student/Parent Handbook.**

Upon admission to CCHS, each student will be given a copy of the DCSS Student Code of Conduct and the CCHS Student/Parent Handbook. These documents identify different categories of inappropriate conduct and describe the penalties associated with each, based on the number of offenses. Your student will be expected to adhere to the policies and procedures described within each of these handbooks. We expect all students to assume the responsibility of comporting themselves in a manner which is conducive to growth and learning.

DeKalb Early College Academy (DECA)

DEKALB EARLY COLLEGE ACADEMY (DECA)

1701 Mountain Industrial Blvd
Stone Mountain, GA 30083
678-875-2402 (Office)

Program Description: Premier DeKalb County School System has partnered with Georgia Perimeter College to offer an innovative and groundbreaking initiative designed to increase graduation rates and attainment of a college degree for rising 9th grade students. This program targets first generation and, preferably, low income students with average ability. It offers students the opportunity to obtain not only a traditional college preparatory high school diploma, but also the possibility to earn up to 60 college credits enabling him/her to receive a two-year Associates of Arts degree from Georgia Perimeter College. Because the college is a member of the Georgia Board of Regents in the University System of Georgia, acquiring this degree and successfully meeting all other admissions requirements, will ensure the student a seamless transfer into other Georgia colleges and universities.

Special Features:

- Small class size (18 students or fewer)
- Faculty academic advisors for students
- Academic plans charted for a variety of college majors/career plans
- Assistance toward enabling students to earn at least 60 college credits towards an associates degree (grades 9-12)
- Academic assistance toward completing an associate's degree thus guaranteeing a seamless transfer to other colleges and universities within the University System (provided all other admission criteria are met)
- Access to computer-based personality inventories and career exploration profiles
- Development of Learning Communities designed to provide opportunities for "shared learning" among students
- Participation in a "college success" program designed to make the transition between high school and college smoother
- Guest lecturers, Cultural excursions, College Tours, Peer Tutoring, Mentor-Mentee Programs, and Clubs and Activities which serve as outlets

Eligibility:

Completed application including a letter of interest, attendance report, discipline report, standardized test scores, interview and recommendations

Grade Levels Served: 9-12

Transportation: The most current DeKalb County transportation policy will be followed for DeKalb Early College Academy. During the 2009-2010 school year, students will report to designated satellite pickup locations in their region for transportation to DeKalb Early College Academy.

Selection Process: Application and interview process

Contacts: Contact Dr. Lena Travis, Head Counselor at 678-875-2416 for additional information

Web site: <http://www.dekalb.k12.ga.us/earlycollege>



Special Interest Magnet Programs

The Arts

DEKALB ELEMENTARY SCHOOL OF THE ARTS (DESA)

3414 Memorial Drive Decatur, Georgia 30032
678-874-1300 (Information) 678-874-1302 (Office)

***Scheduled to relocate to 797 Fayetteville Rd SE, Atlanta, GA 30316 for the 2009-2010 school year.**

Program Description: Magnet participants follow an enriched version of the DeKalb School System curriculum through dance, drama, music, and art. The utilization of technical theater and visual arts enhance the performing arts program. Field trips to the ballet, symphony, and the theater are offered as well as workshops conducted by professional artists. The program utilizes technology, supplies and equipment for stimulating all facets of creativity. Concepts of drama, dance, music, and art are enhanced through student participation in performances and projects. Class instrumental lessons and choral experiences are an integral part of the curriculum.

Special Features:

- Technology-assisted Music in Education Program (MIE) taught with a keyboard lab approach
- Piano keyboard instruction
- Instruction on Orff instruments
- Instruction in a dance studio equipped with mirrors, a suspended floor, and other features
- Instruction in various styles of dance (ballet, jazz, modern, etc.)
- Access to a variety of technical equipment costumes, props, and sets
- Arts-related field trips
- Interdisciplinary approach, integrating the arts throughout the curriculum
- Parental involvement encouraged
- Tour performing groups
- Performances enhanced by costumes, props and sets

Eligibility:

- Completed application
- 3.0 (or higher) core subject grade point average on the 2008-2009 fall report card for students applying for grades 2-7

Grade Levels Served: K-7

Transportation:

The most current DeKalb County transportation policy will be followed for the magnet programs/schools. During the 2009-2010 school year, students will report to designated satellite pickup locations in their region for transportation to all magnet programs/schools.

Selection Process:

Interview and audition in two arts areas for grades 4 -7
Academic and Arts recommendations for grades 4-7
Random lottery selection process based on seat availability for grades K-3

Feeder Schools:

DeKalb School of the Arts upon audition, interview and acceptance

Web site:

<http://www.dekalb.k12.ga.us/hooperalexander>



Special Interest Magnet Program

The Arts

DEKALB SCHOOL OF THE ARTS (DSA)
2415B N. Druid Hills Road Atlanta, GA 30029
678-676-2502 (Office)

***Scheduled to be relocated to 1192 Clarendon Road Avondale Estates, Georgia 30002 for the 2009-2010 school year.**

Program Description: The DeKalb School of the Arts (DSA) is uniquely designed to appeal to high school students in the areas of music (vocal and instrumental), dance, visual arts, technical theater, creative writing, media technology, drama, and musical theater. DSA is the only DeKalb high school that offers a five-year program encompassing all aspects of performance and applied arts. It also affords students the opportunity to satisfy the requirements of the excellent academic program prescribed under the DeKalb curriculum guidelines. Long-range life enrichment is viewed as a goal for all participants in this magnet high school. The program is noted for an outstanding faculty, comprehensive course offerings, and numerous special performances which emerge as a natural outgrowth of the curriculum.

Special Features:

- Comprehensive course offerings
- Numerous special performances which emerge as a natural outgrowth of the curriculum
- Offerings include dance, drama, vocal music and instrumental music, creative writing and visual arts
- Extended day activities, media technology, and technical theater
- Low pupil-teacher ratio in some classes
- Parental involvement encouraged

Eligibility:

- Separate application/audition packet available January 19 – March 27, 2009 in local schools
- 3.0 (or higher) core subject grade point average on the 2008-2009 fall report card for all students
- Application deadline: March 27, 2009 by 2:00 p.m. – send all materials directly to DSA

Grade Levels Served: 8-12

Transportation:

The most current DeKalb County transportation policy will be followed for the magnet programs/schools. During the 2009-2010 school year, students will report to designated satellite pickup locations in their region for transportation to all magnet programs/schools.

Selection Process:

Audition and interview in two arts areas for grades 8 -12
Academic and Arts recommendations
Portfolios required for creative writing, technical theater, media, visual arts and technology

Web site:

<http://www.dekalb.k12.ga.us/dsa>



Special Interest Magnet Program

Mathematics, Science and World Language

EVANSDALE ELEMENTARY SCHOOL

2914 Evans Woods Dr., Doraville, Georgia 30340
678-874-2700 (Information) 678-874-2702 (Office)

***As of July 1, 2009, Henderson Middle School will no longer serve as a magnet program for grades 6-8. These grade levels served will be transferred to Columbia Middle School.**

Program Description: The Evansdale Mathematics, Science, and World Language Program strives to meet the needs of students in kindergarten through fifth grade with an interest to develop their math, science, and communication skills in a challenging environment balanced by fine arts and a world language component. The curriculum is designed to enrich the basic curriculum through an interdisciplinary approach as students participate in integrated hands-on activities. Technology is also used to enhance instruction. Students learn content through analytical, in-depth research studies. Activities promote higher-order thinking as students work in a laboratory environment to solve problems. French, music, and art are strong features of the program, helping to develop communication and creativity skills.

Special Features:

- Cooperative learning
- Science lab
- Emphasis on technical support for curriculum areas
- French taught daily
- Parental involvement encouraged

Eligibility:

- Completed application
- 3.0 (or higher) core subject grade point average on the 2008-2009 fall report card for students applying for grades 2-5

Grade Levels Served: K-5

Transportation:

The most current DeKalb County transportation policy will be followed for the magnet programs/schools. During the 2009-2010 school year, students will report to designated satellite pickup locations in their region for transportation to all magnet programs/schools.

Selection Process:

Random lottery selection process based on seat availability

Feeder Schools:

Columbia Middle School, Columbia High School

Web site:

<http://www.dekalb.k12.ga.us/evansdale>



Special Interest Magnet Program

Mathematics, Science and Computer Education

CLIFTON ELEMENTARY SCHOOL

3132 Clifton Church Road S.E., Atlanta, Georgia 30316
678-874-4400 (Information) 678-874-4402 (Office)

Program Description: The Clifton Mathematics, Science, and Computer Education Magnet Program offers a unique and technology intensive environment. It provides third through fifth grade students the opportunity to go beyond the confines of the classroom to explore real-life problems. These students are preparing to harness the power of computers to achieve success in personal and professional ventures. The magnet program exposes students to DeKalb's excellent curriculum and offers a world language daily. Each student will have full access to a computer workstation all day, every day. Increased access to the computer provides bonuses: more time to improve reading and math skills and more time to solve problems and manage information. Students use computer technology to conduct grade level research projects that integrate all curriculum areas. Computers are used to collect and analyze data in order to solve problems. The computer applications lab in which magnet students work houses specialized hardware and innovative computer software for desktop publishing, graphic design, writing, simulations, science experiments, graphics and word processing. This technology-intensive environment for third through fifth grade students provides each student full access to a computer workstation. Applications such as telecommunications and other technology are used to enhance the present instructional program.

Special Features:

- A computer on every student's desk
- Electronic access to information and human resources across the nation
- Emphasis on technological support for curriculum areas
- Expanded instruction in math and science
- Multimedia production capabilities for publication of student work
- French taught daily
- Parental involvement encouraged

Eligibility:

- Completed application
- 3.0 (or higher) core subject grade point average on the 2008-2009 fall report card for students applying for grades 3-5

Grade Levels Served: 3-5

Transportation:

The most current DeKalb County transportation policy will be followed for the magnet programs/schools. During the 2009-2010 school year, students will report to designated satellite pickup locations in their region for transportation to all magnet programs/schools.

Selection Process:

Random lottery selection process based on seat availability

Feeder Schools:

Columbia Middle School, Columbia High School

Web site:

<http://www.dekalb.k12.ga.us/clifton>



Special Interest Magnet Program Mathematics, Science and Technology

SNAPFINGER ELEMENTARY SCHOOL

1365 Snapfinger Road, Decatur, Georgia 30032

678-874-1800 (Information) 678-874-1802 (Office)

***This program has been recommended for merger with the Clifton Elementary School Mathematics, Science, and Computer Education Magnet Program pending DeKalb County Board of Education approval.**

Program Description: The Snapfinger Academy of Mathematics, Science, and Technology Magnet Program meets the needs of fourth and fifth grade students with an interest and aptitude in math, science, and technology. The curriculum at the magnet academy develops math/science skills as well as critical thinking skills. The 4th and 5th grade students participate in the CEISMC summer enrichment programs at Georgia Tech. This summer enrichment program is designed to motivate the students to participate in exploring mathematics, science, technology activities, and career opportunities. Students benefit from instruction in laboratory settings rich in materials and equipment. Spanish instruction is offered daily. The magnet program is equipped with a computer lab containing enough workstations to allow students to work individually. Computers are available for study in the technology lab. All are part of a total learning system that includes tutorials, drill and practice, problem-solving activities, and tests. The program is designed to develop math and science skills through a discovery approach to learning. Math and science are taught in laboratories equipped with educational equipment and materials, such as: explorer and scientific calculators, stereo microscopes, digital probe thermometer and a computer science demonstration unit.

Special Features:

- Fully equipped, integrated science/mathematics labs
- Emphasis on laboratory and inquiry skills
- Teachers with highly specialized training in mathematics and science
- Spanish taught daily
- Parental involvement encouraged

Eligibility:

- Completed application
- 3.0 (or higher) core subject grade point average on the 2007-2008 fall report card for students applying for grades 4-5

Grade Levels Served: 4-5

Transportation: Transportation is provided to students residing in the DeKalb County School District.

Selection Process: Random lottery selection process based on seat availability

Feeder Schools: Columbia Middle School, Columbia High School

Website: <http://www.dekalb.k12.ga.us/snapfinger>



Special Interest Magnet Program

Mathematics, Science and Technology

COLUMBIA MIDDLE SCHOOL

3001 Columbia Drive, Decatur, Georgia 30034
678-875-0500 (Information) 678-875-0502 (Office)

***As of July 1, 2009, Henderson Middle School will no longer serve as a magnet program for grades 6-8. These grade levels served will be transferred to Columbia Middle School.**

Program Description: The magnet program will emphasize mathematics, science, and technical concepts and skills required to go beyond the confines of basic instruction. The curriculum is designed to develop math, science, and technical skills as well as enhance creative, critical, and research skills. Instruction takes place in a laboratory setting to provide students with real-life, hands-on experiences. Technology is integrated to allow students to take part in tutorials, simulated experiments, problem-solving activities, and collecting and analyzing data for research projects. Studying a specific world language is also a major component of the magnet program.

Special Features:

- Enriched science/math courses
- Integration of technology into course work
- Emphasis on inquiry skills
- Laboratory-based math and science studies
- Computer lab
- Parental involvement encouraged

Eligibility:

- Completed application
- 3.0 (or higher) core subject grade point average on the 2008-2009 fall report card for students applying for grades 6-8
- *Students enrolling in the Magnet Program at the eighth grade level will not earn a Carnegie Unit for World Language.**
- *The ninth grade math course will be determined by 2008-2009 Criterion-Referenced Competency Test (**CRCT**) math total score or Iowa Tests of Basic Skills (**ITBS**) math total score

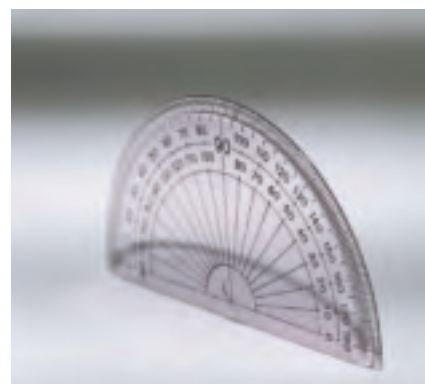
Grade Levels Served: 6-8

Transportation: The most current DeKalb County transportation policy will be followed for the magnet programs/schools. During the 2009-2010 school year, students will report to designated satellite pickup locations in their region for transportation to all magnet programs/schools.

Selection Process: Random lottery selection process based on seat availability

Feeder Schools: Columbia High School

Web site: <http://www.dekalb.k12.ga.us/columbians>



Special Interest Magnet Program

Mathematics, Science and Technology

COLUMBIA HIGH SCHOOL

2106 Columbia Drive, Decatur, Georgia 30032
678-874-0800 (Information) 678-874-0802 (Office)

Program Description: The Mathematics, Science, and Technology Magnet Program offers students interested in the fields of math, science, and technology an opportunity to build skills and knowledge in these areas. The magnet program integrates technology into an interdisciplinary curriculum of natural sciences, mathematics, and computer science. Emphasis is placed on preparing students to enter careers related to science, mathematics, and technology. Advanced study of scientific principles and mathematical concepts will enhance the opportunity for success at the college and career levels. Courses for the enhanced eleventh and twelfth grade curriculum include: Advanced Placement (AP) courses in U.S. History, Chemistry, Physics, Calculus, and World Languages - French and Spanish. Research and lab techniques are major features. Laboratories are equipped with educational materials. Extended studies allow students to experience real life, hands-on studies beyond the traditional classroom. This program is designed to present math, science, and technology in a single approach to learning. The curriculum is implemented by integrating the subject areas through science applications. Scientific and mathematical equipment and supplies, as well as computer hardware and software, are available for use by the students.

Special Features:

- Fully equipped science, math, and computer labs
- Block scheduling of math, science, social studies, and English
- Development of laboratory and inquiry skills
- Field trips and speakers provide exploration into math, science, & technology related careers
- Computer technology infusion into the total curriculum
- Multicultural content
- Parental involvement encouraged



Eligibility:

- Completed application
- 3.0 (or higher) core subject grade point average on the 2008-2009 fall report card for all students applying for grades 9-12

Prerequisite Courses Required:

Rising 9 th Graders	*Math level will be determined by 2008-2009 Criterion-Referenced Competency Test (CRCT) math total score or Iowa Tests of Basic Skills (ITBS) math total score
Rising 10 th Graders	General or Advanced Algebra I or Geometry, Math I General or Advanced Biology or Physical Science, Civics/Citizenship, English Literature
Rising 11 th Graders	General or Advanced Geometry or Algebra II, Math II, American History, English General or Advanced Chemistry

Grade Levels Served: 9-12

Transportation:

The most current DeKalb County transportation policy will be followed for the magnet programs/schools. During the 2009-2010 school year, students will report to designated satellite pickup locations in their region for transportation to all magnet programs/schools.

Selection Process:

Random lottery selection process based on seat availability

Web site:

<http://www.dekalb.k12.ga.us/columbiahs>

High Achievers Magnet Programs

KITTREDGE MAGNET SCHOOL

1663 East Nancy Creek Drive, Atlanta, Georgia 30319
678-676-7600 (Information) 678-676-7602 (Office)

WADSWORTH MAGNET SCHOOL

2084 Green Forrest Drive Decatur, Georgia 30032
678-874-2400 (Information) 678-874-2402 (Office)

Program Description: The High Achievers Magnet Program continues to offer an educational program to students in grades 4-6 who possess the intellectual potential, aptitude, and functional ability to achieve in a rigorous academic environment. The magnet program for high achieving students is comprehensive. It is designed to enable students to be creative, independent in action, critical in thoughts, and effective in communication. There is an instrumental music component in the curriculum, and students are scheduled into art and music classes weekly. In addition to providing a challenging curriculum, students are encouraged to enroll in the many academically-centered enrichment opportunities provided for students after school. Teachers and parents direct these after-school sessions.

Special Features:

- Lab-oriented science program
- Scientific method of investigative problem solving
- Interdisciplinary approach to curriculum
- World Language (Kittredge: German, Wadsworth: Spanish)
- Up-to-date computer lab
- Student/school participation in competitions at many levels
- Parental involvement encouraged
- Instrumental music taught daily

Eligibility:

- Completed application
- 3.0 (or higher) core subject grade point average on the 2008-2009 fall report card for students applying for grades 4-6
- 2008-2009 Iowa Tests of Basic Skills (ITBS) or another 2008-2009 norm-referenced standardized test
- 75th percentile (or higher) total reading score, 75th percentile (or higher) total math w/computation score, 85th percentile (or higher) complete composite score
- *Private and home-school applicants must provide standardized test scores by May 1, 2009 and attach the fall 2008-2009 report card to the Magnet Programs application to be eligible for the lottery (random drawings).*

Grade Levels Served: 4-6

Transportation: The most current DeKalb County transportation policy will be followed for the magnet programs/schools. During the 2009-2010 school year, students will report to designated satellite pickup locations in their region for transportation to all magnet programs/schools.

Selection Process: Random lottery selection process based on seat availability

Feeder Schools: Chamblee Middle School, Chamblee Charter High School (Kittredge)
Chapel Hill Middle School, Southwest DeKalb High School (Wadsworth)

Web sites: <http://www.dekalb.k12.ga.us/kittredge> <http://www.dekalb.k12.ga.us/wadsworth>



High Achievers Magnet Programs

CHAMBLEE MIDDLE SCHOOL

3601 Sexton Woods Dr, Chamblee, GA 30341
678-874-8200 (Information) 678-874-8202 (Office)

CHAPEL HILL MIDDLE SCHOOL

3535 Dogwood Farm Road, Decatur, Georgia 30034
678-676-8500 (Information) 678-676-8502 (Office)

Program Description: The middle school High Achievers Magnet Programs are designed to serve academically talented students. It provides students the opportunity to excel in a challenging, comprehensive academic environment. This program features the latest teaching approaches. Technology enhances instruction in all areas of the curriculum. This program provides a rigorous interdisciplinary course of study that meets the needs of highly motivated students. There is a "hands-on" emphasis throughout the interdisciplinary curriculum using computers and cooperative learning strategies. In some programs, students benefit from instruction in laboratory settings rich in materials and equipment. Technology is integrated into the curriculum. World language is taught daily and is considered core content. The objective of this magnet program is to target the development and expansion of student capabilities needed for leadership in the future.

Special Features:

- Rigorous academic program in all areas of curriculum
- Accelerated courses
- World language taught daily (Chamblee: German, Chapel Hill: Spanish)
- Computer-assisted instruction and the use of the latest educational technology throughout the curriculum
- Multicultural literature-based program
- Integrated curriculum
- Laboratories
- Parental involvement

Eligibility:

- Completed application
- 3.0 (or higher) core subject grade point average on the 2008-2009 fall report card for students applying for grades 6-8
- 2008-2009 Iowa Tests of Basic Skills (ITBS) or another 2008-2009 norm-referenced standardized test
- 75th percentile (or higher) total reading score, 75th percentile (or higher) total math w/computation score, 85th percentile (or higher) complete composite score
- *Private and home-school applicants must provide standardized test scores by May 1, 2009 and attach the fall 2008-2009 report card to the Magnet Programs application to be eligible for the lottery (random drawings).*
- *Math level will be determined by 2008-2009 Criterion-Referenced Competency Test (CRCT) math total score or Iowa Tests of Basic Skills (ITBS) math total score*
- *Students enrolling in the Magnet Program at the eighth grade level will not earn a Carnegie Unit for World Language.**

Grade Levels Served: 7,8

Transportation: The most current DeKalb County transportation policy will be followed for the magnet programs/schools. During the 2009-2010 school year, students will report to designated satellite pickup locations in their region for transportation to all magnet programs/schools.

Selection Process: Random lottery selection process based on seat availability

Feeder Schools: Chamblee High School (Chamblee Middle School)
Southwest DeKalb High School (Chapel Hill Middle School)

Web sites: <http://www.dekalb.k12.ga.us/chambleems>
<http://www.dekalb.k12.ga.us/chapelhillms>



High Achievers Magnet Programs

CHAMBLEE CHARTER HIGH SCHOOL

3688 Chamblee-Dunwoody Road, Chamblee, GA 30341
678-676-6902 (Office)

SOUTHWEST DEKALB HIGH SCHOOL

2863 Kelley Chapel Road, Decatur, GA 30034
678-874-1900 (Information) 678-874-1902 (Office)

Program Description: The Chamblee Charter High and Southwest DeKalb High Magnets for High Achievers are designed to challenge students who will benefit from a fast-paced, stimulating environment. These programs provide a rigorous interdisciplinary course of study that meets the needs of highly motivated students. Special emphasis is placed on preparing students to succeed through higher-order critical thinking skills, creative and cooperative teaching, fluency in a second language, extensive computer-based and multimedia instruction, and the infusion of multicultural literature. Technology is integrated into the interdisciplinary curriculum. Core subjects are taught at an accelerated level with a variety of early Advanced Placement (AP) opportunities being offered to eleventh and twelfth grade students. Through deliberate and instructional interventions, students progress to higher levels of intellectual functioning. This educational program provides students the opportunity to excel in a challenging and comprehensive academic program.

Special Features:

- Challenging academic program
- Accelerated courses
- Advanced Placement courses offered starting in the tenth grade
- Well-equipped labs
- Focus on global experiences
- Technology and multimedia curricular infusion
- Parental involvement

Eligibility:

- Completed application
- 3.0 (or higher) core subject grade point average on the 2008-2009 fall report card for students applying for grades 9-12

Rising 9th graders only:

- 2008-2009 Iowa Tests of Basic Skills (ITBS) or another 2008-2009 norm-referenced standardized test
- 75th percentile (or higher) total reading score, 75th percentile (or higher) total math w/computation score, 85th percentile (or higher) complete composite score

**Private and home-school applicants must provide standardized test scores by May 1, 2009 and attach the fall 2008-2009 report card to the Magnet Programs application to be eligible for the lottery (random drawings).*

Prerequisite Courses Required:

Rising 9 th Graders	Math level will be determined by 2008-2009 Criterion-Referenced Competency Test (CRCT) math total scores or Iowa Tests of Basic Skills (ITBS) math total scores Math 1
Rising 10 th Graders	Advanced English, Civics/Geography, General or Advanced Biology Acc. Math I, General or Advanced Algebra II or Geometry Beginning French or Spanish or German or Latin
Rising 11 th Graders	Advanced English, World History, General or Advanced Chemistry Accelerated Math II, General or Advanced Algebra II French or Spanish or German or Latin
Rising 12 th graders	Accelerated Math III, Advanced Core and World Language classes beyond the eleventh grade requirements

Grade Levels Served: 9-12

Transportation:

The most current DeKalb County transportation policy will be followed for the magnet programs/schools. During the 2009-2010 school year, students will report to designated satellite pickup locations in their region for transportation to all magnet programs/schools.

Selection Process:

Random lottery selection process based on seat availability

Web site:

<http://www.dekalb.k12.ga.us/chambleehs>
<http://www.dekalb.k12.ga.us/swdekalbhs>



Montessori Programs

BRIAR VISTA ELEMENTARY

1131 Briar Vista Terrace N.E. Atlanta, Georgia 30324
678-874-5900 (Information) 678-874-5902 (Main Office)

MIDWAY ELEMENTARY

3318 Midway Road Decatur, Georgia 30032-2435
678-874-1500 (Information) 678-874-1502 (Main Office)

HUNTLEY HILLS ELEMENTARY

2112 Seaman Circle Chamblee, Georgia 30341
678-676-7400 (Information) 678-676-7402 (Main Office)

OFFICE OF STUDENT ASSIGNMENT

3770 N. Decatur Road Decatur, GA 30032 Building A
678 676 0715 (Office) 678 676 0710 (FAX)

Program Description: The Montessori approach and its diverse community assist in establishing a strong educational foundation for all students by providing a safe, nurturing learning environment. Montessori programs feature multi-age classrooms where children learn at their own pace through hands-on experience, using materials especially prepared for investigation. This environment enables our students to become life-long learners in a rapidly changing society. The Montessori program stresses the importance of adapting the child's learning environment to his/her developmental level and of the role of physical activity in absorbing academic concepts and practical skills.

Special Features:

- Multi-aged classes
- “Prepared” environment for each student
- Montessori trained teachers

Eligibility:

Students in grades 1-5 must have prior Montessori experience

Grade Levels Served:

Midway	K-5
Briar Vista	K-5
Huntley Hills	K-5

Transportation:

Parents must provide transportation for students receiving placement at a Montessori school.

Selection Process:

The Montessori Elementary Schools will invite students to apply for the program this 2009-2010 school year. The Montessori Program lottery is being conducted to select eligible students for a waiting list only. Students from the home attendance area will have priority to fill open seats. If there are seats available after the home attendance area students are placed, then students from the at-large communities will be considered for enrollment. All applications must be submitted to the Office of Student Assignment by mail or hand delivery. Faxed applications will **not** be accepted. All students selected through the lottery will be placed on a waiting list until seats becomes available.

Contacts:

For more information regarding Montessori or scheduling a tour of Montessori sites
Contact: Mr. Wayne Flindall, Montessori Field Specialist at 678-874-1533 or
Wayne_H_Flindall@fc.dekalb.k12.ga.us

Web sites:

<http://www.dekalb.k12.ga.us/briarvista>
<http://www.dekalb.k12.ga.us/huntleyhills>
<http://www.dekalb.k12.ga.us/midway>



Coralwood/Hawthorne Partnership

THE CORALWOOD SCHOOL & DIAGNOSTIC CENTER

2477 Coralwood Drive, Decatur, Georgia 30033-1323
678-874-6000 (Information)678-874-6002 (Office)

Program Description: Coralwood is a school that specializes in Early Childhood Education for students with disabilities and typically developing students. The school serves children beginning at three years of age through kindergarten. The school follows the state approved, age appropriate curriculum for the students enrolled at Coralwood. Many of the classes provide an integrated educational setting that places students with disabilities alongside students who are typically developing. Small self-contained classes are also available for students who require more individualized instruction. Students may continue enrollment in the Coralwood/Hawthorne Partnership to the highest grade at Hawthorne.

Special Features:

- Children with special needs and typically developing students learn together
- Physical, occupational, speech/language, recreational, vision and mobility therapies
- Motor and music classes provided
- Social worker available
- Computer lab

Eligibility: Completed Application

Grade Levels Served: ages 3, 4, 5 and Kindergarten

Transportation: Transportation is provided for special education students based on the student's Individual Educational Plan (IEP). General education students residing in the attendance area will follow the most current DeKalb County School System transportation policy. Parents must provide transportation for typically developing students residing outside the attendance area and all three year old selected students.

Selection Process: Random lottery selection process based on seat availability

Feeder Schools: Hawthorne Elementary School

Web site: <http://www.dekalb.k12.ga.us/coralwood>



Discovery Learning Academy Program

RONALD E. MCNAIR DISCOVERY LEARNING ACADEMY

Second Avenue, Atlanta, Georgia 30032
678-874-9100 (Information) 678-874-9102 (Main Office)

Program Description: Discovery Learning Academy is an elementary instructional program that extends the Georgia Performance Standards to develop students' academic, social and technical abilities and skills. The program mandates that teachers implement a variety of innovative and engaging strategies to narrow the achievement gap and increase academic rigor. Student achievement is heightened through community connections, participation in fine arts and world language courses and the utilization of performance-based learning. The active, hands-on approach to learning will be utilized to allow students to better analyze and master the standards.

Special Features:

- World Language
- Technology
- Fine Arts
- Active, Hands-On Learning Activities
- Performance-Based Standards and Instructional Real World Activities
- Uniform Option to Support a Structured, Disciplined Environment
- Extended Courses and Activities

Eligibility:

Completed Application

Grade Levels Served: K-5

Transportation:

Students living in the attendance area will receive transportation based on the most current DeKalb County School System transportation policy. Parents must provide transportation for students receiving placement at the McNair Discovery Learning Academy and living outside the attendance area.

Selection Process:

Random lottery selection process based on seat availability

Feeder Sites:

McNair Middle School, McNair High School

Web site:

<http://www.dekalb.k12.ga.us/mcnares>



International Baccalaureate (IB) Primary Years Programme (PYP)

AVONDALE ELEMENTARY SCHOOL

10 Lakeshore Drive
Avondale Estates, Georgia 30002-1499
678-676-5200 (Information) 678-676-5202 (Office)

FERNBANK ELEMENTARY SCHOOL

157 Heaton Park Dr. N.E.
Atlanta, Georgia 30307
678-874-9300 (Information) 678-874-9302 (Office)

MIDVALE ELEMENTARY SCHOOL

3836 Midvale Road
Tucker, Georgia 30084
678-874-3400 (Information) 678-874-3402 (Main)

Program Description: The Primary Years Programme (PYP) focuses on the development of the whole child, addressing social, physical, emotional and cultural needs. At the same time, it gives children a strong foundation in all of the major areas of knowledge: mathematics, social studies, drama, language, music, visual arts, science, personal and social education, and physical education. The PYP strives to help children develop an international perspective—to become aware of and sensitive to the points of view of people in other parts of the world.

Special Features:

- Requires the study of a world language
- Promotes international mindedness
- Encourages a positive attitude to learning by engaging students in inquires and developing their awareness of the process of learning so that they become lifelong learners
- Reflects real life by encouraging learning beyond traditional subjects with meaningful, in-depth inquires into real issues
- Supports the development of communication skills to encourage inquiry, understanding, language acquisition, and to allow student reflection and expression
- Exposes students to an internationally recognized curriculum
- Emphasizes through the Learner Profile, the development of the whole student—physically, intellectually, emotionally, and ethically.
- Utilizes best practices
- Provides continuous teacher training
- Implements collaborative, transdisciplinary teaching units



Eligibility:

The International Baccalaureate (IB) Primary Years Programme (PYP) is a full-school initiative. All children at PYP schools are IB PYP students. Acceptance through the DeKalb County School System Regional School Choice is based solely on seat availability. Students from the home attendance area will be given first priority to fill open seats.

Continuation Guidelines:

IB PYP Students must maintain satisfactory attendance and discipline records.

Grades Served:

K – 5

Transportation:

Parents must provide transportation for students residing outside the attendance area.

Selection Process:

In the event that there may be more qualified students than places available, a lottery will be conducted by the Magnet and Theme Schools Office.

Contacts:

Dr. John Wilson, DCSS IB District Coordinator K-12 john_m_wilson@fc.dekalb.k12.ga.us

Web sites:

<http://www.dekalb.k12.ga.us/support/ib>
<http://www.dekalb.k12.ga.us/avondale>
<http://www.dekalb.k12.ga.us/fernbank>
<http://www.dekalb.k12.ga.us/midvale>

International Baccalaureate (IB) Middle Years Programme (MYP)

SHAMROCK MIDDLE SCHOOL

3100 Mount Olive Drive Decatur, Georgia 30033
678-874-7600 (Information) 678-874-7602 (Office)

Program Description: The Middle Years Programme (MYP), for students aged 11-14, recognizes that students in this age group are particularly sensitive to social and cultural influences and are struggling to define themselves and their relations to others. The programme helps students develop the skills to cope with this period of uncertainty. It encourages them to think critically and independently, to work collaboratively and to take a disciplined approach to studying. The MYP seeks to give students an international perspective—to help them become informed about the experiences of people and cultures throughout the world. It also fosters a commitment to help others and to act as a responsible member of the community at the local, national, and international levels.

Special Features:

- Requires the study of a world language
- Promotes international mindedness
- Encourages a positive attitude to learning by engaging students in inquires and developing their awareness of the process of learning so that they become lifelong learners
- Reflects real life by encouraging learning beyond traditional subjects with meaningful, in-depth inquires into real issues
- Supports the development of communication skills to encourage inquiry, understanding, language acquisition, and to allow student reflection and expression
- Exposes students to an internationally recognized curriculum
- Emphasizes through the Learner Profile, the development of the whole student—physically, intellectually, emotionally, and ethically.
- Utilizes best practices
- Provides continuous teacher training
- Implements collaborative, transdisciplinary teaching units

Eligibility:

The International Baccalaureate (IB) Middle Years Programme (MYP) is a full-school initiative. All children at MYP schools are IB MYP students. Acceptance through the DeKalb County School System Regional School Choice is based solely on seat availability. Students from the home attendance area will be given first priority to fill open seats.

Continuation Guidelines: IB MYP Students must maintain satisfactory attendance and discipline records.

Grade Levels Served: 6-8

Transportation: Parents must provide transportation for students residing outside the attendance area.

Selection Process: In the event that there be more qualified students than places available, a lottery will be conducted by the Office of Magnet and Theme Schools.

Contacts: Dr. John Wilson, DCSS IB District Coordinator K-12 john_m_wilson@fc.dekalb.k12.ga.us

Web sites: <http://www.dekalb.k12.ga.us/support/ib>
<http://www.dekalb.k12.ga.us/shamrock>



International Baccalaureate (IB) Diploma Programme (DP)

DRUID HILLS HIGH SCHOOL

1798 Haygood Drive NE, Atlanta, Georgia 30307
678-874-6300 (Information) 678-874-6302 (Office)

MARTIN LUTHER KING JR. HIGH SCHOOL

3991 Snapfinger Road, Lithonia, Georgia 30038
678-874-5400 (Information) 678-874-5402 (Office)

TUCKER HIGH SCHOOL

5036 LaVista Road, Tucker, Georgia 30084
678-874-3700 (Information) 678-874-3702 (Office)

Program Description: The International Baccalaureate (IB) Diploma Programme (DP) is designed for students who desire the most rigorous, advanced, and challenging program of study. IB candidate students take pre-university level courses throughout their 11th and 12th grade years. Traditional academic subjects are part of the program, but it also emphasizes the interrelatedness of knowledge and skills through a transdisciplinary programme of inquiry which is supported by a required course, Theory of Knowledge (ToK). The IB DP subject areas are first language, second language, social studies, mathematics, science and fine arts. Students are required to develop a proficiency in a second language during the program. Students are assessed internally by IB trained teachers at the local authorized IB schools and externally by 4,000 IB examiners worldwide to receive the IB Diploma. DP students must also complete 150 Creativity, Action, & Service (CAS) hours, complete a 4,000 word essay (EE), and take the TOK course. Advanced standing is given by colleges and universities in the United States and around the world.

Special Features:

- Requires the study of a world language
- Promotes international mindedness
- Encourages a positive attitude to learning by engaging students in inquires and developing their awareness of the process of learning so that they become lifelong learners
- Reflects real life by encouraging learning beyond traditional subjects with meaningful, in-depth inquires into real issues
- Supports the development of communication skills to encourage inquiry, understanding, language acquisition, and to allow student reflection and expression
- Exposes students to an internationally recognized curriculum
- Emphasizes through the Learner Profile, the development of the whole student—physically, intellectually, emotionally, and ethically.
- Utilizes best practices
- Provides continuous teacher training
- Implements collaborative, transdisciplinary teaching units

Eligibility:

- Rising eleventh grader
- Completed Application
- The most advanced/accelerated/honors/high achiever core courses and world language for which the student qualifies in the 7th - 10th grades.

Rising 11th Grade Students IB DP Entry Requirements

- Minimum core 3.2 average at end of 10th grade
- Completion of advanced/accelerated core curriculum in the 9th and 10th grades
- Completion of three years of French, Spanish, or German by the end of tenth grade
- Two favorable teacher recommendations from tenth grade core subjects
- Completion of the IB DP application student packet with parent/guardian approval
- A hand-written, 250-word essay on interest in IB
- Interview with the IB Committee of the school

Grade Levels Served: 11-12

Transportation: Parents must provide transportation for students residing outside the attendance area.

Selection Process: The IB Committee at each IB school will review applications and conduct interviews.

Contacts: Dr. John Wilson, DCSS IB District Coordinator K-12 john_m_wilson@fc.dekalb.k12.ga.us

Web sites: <http://www.dekalb.k12.ga.us/druidhills> <http://www.dekalb.k12.ga.us/support/ib>

<http://www.dekalb.k12.ga.us/mlkinghs> <http://www.dekalb.k12.ga.us/tucker>



DEKALB COUNTY SCHOOL SYSTEM
International Baccalaureate (IB) Diploma Programme (DP)

Recommended Sequence of Courses for
Prospective International Baccalaureate Students in 7th – 10th Grades

7th Grade	8th Grade	9th Grade	10th Grade
High Achiever/Advanced/ Accelerated Language Arts	High Achiever/Advanced/ Accelerated Language Arts	Accelerated English I (Literature/Composition)	Accelerated English II (World Literature)
High Achiever/Advanced/ Accelerated GPS 7 th Grade Math	High Achiever/Advanced/ Accelerated GPS 8 th Grade Math/Algebra I	GPS Integrated Math I (Accelerated Math I)/ Adv. Geometry	GPS Integrated Math II (Accelerated Math II)/ Adv. Algebra II
High Achiever/Advanced/ Accelerated Life Science	High Achiever/Advanced/ Accelerated Physical Science	Accelerated Biology	Accelerated Chemistry
High Achiever/Advanced/ Accelerated GPS Social Studies	High Achiever/Advanced/ Accelerated GPS Social Studies	Accelerated American Govt./Civics/World Geography	Accelerated or AP World History
World Language I (Prerequisite for Carnegie Unit) (French, German, Spanish)	World Language I (Carnegie Unit) (French, German, Spanish)	World Language II (French, German, Spanish)	World Language III (French, German, Spanish)
Physical Education	Physical Education	DeKalb/State Requirements	DeKalb/State Requirements
Fine Arts (Music, Art, Theatre)	Fine Arts (Music, Art, Theatre)	DeKalb/State Requirements	DeKalb/State Requirements
Technology	Technology	DeKalb/State Requirements	DeKalb/State Requirements

German is offered at Tucker High School and Martin Luther King Jr. High School.

Rising 9th Grade Students IB DP Entry Requirements

- Minimum core 3.0 average in academic subjects
- Current school year standardized composite test score at the 76th percentile or above or a scaled score of 850 or above in reading on the CRCT
- Commitment to four/five years of a second language
- Commitment to four years of advanced, accelerated, rigorous coursework

*** The International Baccalaureate (IB) Diploma Programme (DP) is not a Gifted Program. DeKalb County School System recommends that prospective International Baccalaureate Diploma Programme IB DP students take the most Advanced/Accelerated/Honors/High Achiever courses for which the student qualifies in preparation for the IB DP courses of the 11th and 12th grades.**

2009-2010 APPLICATIONS

2009- 2010 Magnet Program Application

DeKalb Elementary School of the Arts (DESA) at Hooper Alexander, DeKalb School of the Arts (DSA) High School, Clifton Elementary School, Chamblee Middle School, Chamblee Charter High School, Chapel Hill Middle School, Columbia Middle School, Columbia High School, Evansdale Elementary School, Snapfinger Elementary School, Kittredge Magnet School, Southwest DeKalb High School, and Wadsworth Magnet School

Where do I apply online? <http://eportal.dekalb.k12.ga.us>

1. Personal Computer
2. Local School or Library
3. The DeKalb County Board of Education

3770 North Decatur Road, Decatur, Georgia 30032

March 16 – March 18, 2009 & March 23 – April 3, 2009

9:00 a.m. – 1:30 p.m., Monday-Friday Room 246 D

MAIL OR DELIVER THE APPLICATION AND SUPPORTING DOCUMENTATION TO:

The Magnet and Theme Schools Office
3770 North Decatur Road Bldg B
Decatur, Georgia 30032
March 16, 2009 – April 3, 2009
8:30 a.m. – 5:00 p.m., Monday-Friday

FAXED APPLICATIONS AND DOCUMENTS WILL NOT BE ACCEPTED.

2009-2010 School Choice Program Applications

Charter, Montessori, IB, Discovery Learning, and Coralwood

MAIL OR DELIVER THE APPLICATION AND SUPPORTING DOCUMENTATION TO:

Your Local School

or to the

The Magnet and Theme Schools Office
3770 North Decatur Road Bldg B
Decatur, Georgia 30032
March 16, 2009 – April 3, 2009
8:30 a.m. – 5:00 p.m., Monday-Friday

FAXED APPLICATIONS AND DOCUMENTS WILL NOT BE ACCEPTED.

CHESNUT CHARTER ELEMENTARY SCHOOL

4576 North Peachtree Road
Dunwoody, GA 30338
678 -676-7102

For the 2009-2010 School Year

Application due by April 3, 2009

No bus transportation will be provided to or from Chesnut Charter School for students residing outside the Chesnut attendance zone.

Student Name _____

Current School _____

2009-2010 Grade Level (Circle One) K 1st 2nd 3rd Gender M F

Street Address: _____

City: _____ Zip: _____

Parent/Guardian Information:

Mother's Name: _____

Phone#: (Home) _____ (Work) _____

E-mail Address _____

Father's Name: _____

Phone #: (Home) _____ (Work) _____

E-mail Address _____

THIS APPLICATION MUST BE RETURNED TO YOUR LOCAL SCHOOL BY APRIL 3, 2009. IF THERE ARE MORE APPLICANTS THAN SEAT AVAILABLE, A RANDOM LOTTERY WILL BE HELD. PLEASE SEE THE SCHOOL CHOICE BROCHURE FOR LOTTERY INFORMATION.

***Please be advised that there will be limited, if any, openings at Chesnut Charter School for the 2009-2010 school year.**

Chesnut Charter Elementary School, *servicing students in Grades PK-3*, maximizes the learning experience of every child to create responsible, caring, adaptable, self-confident citizens through a curriculum that emphasizes critical thinking. Chesnut students receive instruction and support through differentiated instructional techniques that meet the needs of diverse learners, which enable them to reach their highest potential.

Chesnut students receive enhanced instruction via flexible groups in a supportive environment. Students participate in curriculum related enrichment activities.

SPECIAL REQUIREMENTS TO ATTEND CHESNUT CHARTER SCHOOL:

- Attendance Requirement
- Uniforms Mandatory
- Parents are required to sign an educational agreement and participation agreement

I submit this application understanding that our family must meet the requirements of Chesnut Charter Elementary School.

Parent Signature _____

Date _____



Kingsley Charter School Application
2051 Brendon Drive Dunwoody, GA 30338
(678) 874-8902 (Office) (678) 874-8910 (Fax) www.KingsleyCharter.org
RETURN APPLICATION TO YOUR SCHOOL BY APRIL 3, 2009.

Student Name: _____
Sex: M F Date of Birth: _____
School Presently Attending: _____
Present Grade Level: _____
What grade will the student be enrolling in for 2009-2010? _____
Please check if your child receives one or more of the following?
 Gifted
 Speech
 ESOL
 Special Education
Email Address: _____
Home Address: _____
City: _____ Zip: _____

Parent/Guardian Information:
Mother's Name: _____
Ph#: (H) _____ (W) _____
 (C) _____
Father's Name: _____
Ph#: (H) _____ (W) _____
 (C) _____
Parent Signature: _____
Date: _____

As a Charter School, we offer many unique opportunities to our students.

Kingsley Charter School is designed to deliver instruction through the arts, literature, writing, and movement. The theme is Brain Compatible Learning. The classroom climate supports thinking by providing a caring, warm, safe and enriching environment. Instruction reflects high challenge and low stress. The focus is on individualized instruction to meet each child's needs. Higher order thinking skills are developed through a rigorous and challenging curriculum.

Special Features:

Differentiated Instruction
Accelerated Learning
Multiple Intelligences
Cooperative Learning Groups
Reading Renaissance

- SPECIAL REQUIREMENTS TO ATTEND KINGSLEY CHARTER SCHOOL**
- Parents are required to sign an educational contract and complete 16 service hours per family.
 - Parents are required to pay an activity fee (\$35.00) to the Kingsley Charter Council.
 - **Parents must provide transportation to and from school.** Parent drop off begins at 7:15 a.m. and pick up is 2:30 p.m. – 2:50 p.m.
 - School begins at 7:40 a.m.
 - All students in grades K – 5 are required to wear a uniform.
 - Students with severe behavior problems may be returned to their home school.
- Lottery will be held at William Bradley Bryant Technology Center on Thursday, May 14, 2009 at 2:00 p.m.*

PEACHTREE CHARTER MIDDLE SCHOOL (PCMS) OPEN ENROLLMENT APPLICATION

4664 N. Peachtree Road
Atlanta, GA 30338
678.676.7702

SCHOOL YEAR 2009-2010

PLEASE PRINT

Student's Name: _____

Street Address: _____ **Apt.** _____

City: _____ **Zip:** _____

Sex: M F **Student ID #** _____ **Date of Birth:** _____

School Presently Attending: _____

Home Attendance Area School (2009-2010): _____

Present Grade Level: _____ **Special Programs:** _____
(Special Education, ESOL, Gifted, High Achievers, etc.)

What grade will the student be enrolling in 2009-2010? (Circle One) 6 7 8

Is a sibling currently enrolled at PCMS? Yes _____ No _____

If yes, please provide name(s) and grade(s) of student(s):
Name: _____ Grade: _____

****Transportation is NOT provided to Peachtree Charter Middle School.**

****Parents are responsible for providing student transportation.**

****Parent Drop-Off may begin 30 minutes prior to the start of school.**

****Parent Pick-Up must occur within 30 minutes after the end of school.**

Parent/Guardian Information:

Mother's Name: _____

Phone #: (Home) _____ (Work) _____

E-mail Address: _____

Father's Name: _____

Phone #: (Home) _____ (Work) _____

E-mail Address: _____

As a Charter School we offer many unique opportunities to our students by providing the following enhancements:

- Utilize Bloom's Taxonomy of Educational Objectives to provide rigor and high quality instruction in an academically engaging setting
- Improve upon the current curriculum and textbooks
- Provide measurable academic performance improvement criteria
- Develop a school-wide discipline plan to enhance school climate
- Utilize staff development to maximize student performance and achievement
- Qualify for grants to fund technology, facilities and programs
- Increase parental involvement and communication with the school
- Involve parents in decision-making and school governance

Special Features

- School-Wide Discipline Plan
- Technology Focus
- Increased Parental Involvement and Communications including Shared Governance

**PARENT/GUARDIAN MAY DOWNLOAD AN APPLICATION AT www.dekalb.k12.ga.us.
PLEASE MAIL OR HAND DELIVER THIS APPLICATION TO PEACHTREE CHARTER MIDDLE SCHOOL
BY 3:00 P.M. ON FRIDAY, APRIL 3, 2009.**

The application process will close promptly at **3:00 p.m.** A lottery will be held at 2 p.m., Thursday, May 14, 2009 at the William Bradley Bryant Technology Center located at 2652 Lawrenceville Highway, Decatur, Georgia 30033. Parents are invited to observe this lottery. **All applications will be wait listed.** Parents will be notified if space becomes available within 30 days of the start of school. The enrollment criteria for the 2009-2010 school year is on a priority basis. All students that live within the defined Dunwoody High School attendance zone automatically qualify to attend Peachtree. Priority enrollment then follows the next three criteria in order **if seats are available:** Students with siblings already attending the school receive first priority in the lottery process, students that attended one of our feeder schools but live out of the area receive second priority in the lottery process and then students that participated in the open lottery process and are on the waiting list are the third priority.

***Please note that notification is ONLY mailed to parents of students selected to attend Peachtree.**

SPECIAL REQUIREMENTS TO ATTEND PEACHTREE CHARTER MIDDLE SCHOOL:

- A. ALL STUDENTS ARE REQUIRED TO ABIDE BY THE SCHOOL'S DRESS CODE.
- B. PARENTS ARE REQUIRED TO SIGN AN EDUCATIONAL CONTRACT AND PARTICIPATE IN A VOLUNTEER PROGRAM.
- C. STUDENTS WITH SEVERE BEHAVIOR PROBLEMS WILL BE REFERRED TO THE STUDENT EVIDENTIARY HEARING COMMITTEE AND MAY BE EXPELLED FROM THE CHARTER SCHOOL.

I submit this application with full knowledge of the requirements for both my student and myself under the provisions of the Peachtree Charter. Furthermore, I understand that (if applicable) I may be required to provide further enrollment information such as residency documents, immunization documents, etc.

Parent/Guardian Signature: _____

Received at Peachtree Charter Middle School: Date: _____ **Time:** _____

Our AIM is to create an environment in which all students strive to reach their highest potential.

CHAMBLEE CHARTER HIGH SCHOOL (CCHS) ADMISSION FORM

3688 Chamblee Dunwoody Rd.

Chamblee, GA 30341

(678) 676-6902

SCHOOL YEAR 2009-2010

Student's Name: _____

Gender: _____ Male _____ Female Date of Birth: _____

Is the student enrolled in a special program? _____ Yes _____ No If yes, please identify. _____
(i.e. Special Education, High Achievers, Gifted, etc.)

Parent/Guardian's Name _____

Street Address: _____ Apt. _____

City, State, Zip _____

Mother's Telephone Number: Daytime _____ Evening _____

Father's Telephone Number: Daytime _____ Evening _____

Home Attendance Area School: _____

School Student is Currently Attending (if different from above): _____

Circle the grade the student will enroll in for the 2009-2010 school year. 9 10 11 12

Is a sibling(s) currently enrolled at CCHS? _____ Yes _____ No

If yes, please provide name(s) and grade(s) of student(s): _____

If there are more applications than there are seats available at CCHS, the available seats will be filled by a random selection process.

I understand that if admission is granted, the parent/guardian must provide transportation.

I also understand that behavioral, dress and attendance standards, as established for all students attending CCHS are expected of students receiving admission. Furthermore, evaluation of the admitted CCHS student will be conducted annually to ensure adherence to the above criteria. I understand that should my child fail to meet the criteria, he/she will lose the privilege of attending CCHS and will be required to return to his/her home attendance area school.

Signature of Parent/Guardian

Date

Received at Chamblee Charter High School

Date: _____

Time: _____

***Note: Applications must be returned to the Chamblee Charter High School main office, c/o Ms. Jean Coleman, by 3:30 p.m., April 3, 2009. Students will receive notification of admission to CCHS by June 10, 2009.**



2009-2010

DeKalb County School System Magnet Programs Application

You may apply ONLINE at www.dekalb.k12.ga.us.

Directions for Submitting an Application

- 1. Follow all instructions, complete all information, and attach all supporting documentation.
2. Please print or type and use black or blue ink only.
3. All applicants must reside in the DeKalb County School District.
4. All applicants applying for kindergarten and first grade must provide a certified birth certificate.
5. All Non-DeKalb County School System (DCSS) students must provide a 2008-2009 report card and proof of residence (water, gas, or electric bills, mortgage contract, or lease) by April 3, 2009 or your application will be considered ineligible for the magnet lottery.
6. Read and Sign the Application and Agreement of Understanding.
7. Return the application to the Magnet/Theme Schools Office at 3770 North Decatur Road Decatur, Georgia 30032 by April 3, 2009.
Faxed copies of the application or supporting documents will NOT be accepted.

*The School Choice Brochure providing a complete description of all programs is available on the DeKalb County School System Web Site at www.dekalb.k12.ga.us. The most current DeKalb County School System Transportation policy will be followed for the magnet programs. During the 2009-2010 school year, students will report to designated satellite pickup locations in their region for transportation to all magnet programs/school.

Student Information Check (v) each box that pertains to your child.

Current DCSS Student - If checked (v), Enter Student I.D. (Seven digit number) Previously Attended DCSS
Non-DCSS Student: Attends Private School Home School Other School District:

Student's Name First Middle Last Generation
Student's Birthday MM/DD/YYYY Check (v) all that apply: Special Education IEP ELL ESOL Gifted 504

Current Grade Level Kindergarten (age 5 by 9/01/08) 1st-7th grade Current School Attending

Parent / Legal Guardian Information

2008-2009 fall core grade point average

Parent's Name First Middle Initial Last Generation
Home Address Apt# City State Zip Code Area Code Telephone Number

SELECT ONLY TWO CHOICES BY INDICATING THE NUMBERS 1 AND 2. Neither choice is guaranteed. Choice 2 will be considered only if seats are available after the random selection process for Choice 1 is complete. All students applying for the High Achievers Magnet Programs must have current, eligible 2008-2009 standardized test scores. No exceptions will be made!

HIGH ACHIEVERS PROGRAMS

- Wadsworth High Achievers (Grades 4-6) Kittredge High Achievers (Grades 4-6)
Chapel Hill Middle High Achievers (Grades 7 & 8) Chamblee Middle High Achievers (Grades 7 & 8)
Southwest DeKalb High Achievers (Grades 9-12) Chamblee High High Achievers (Grades 9-12)

SPECIAL INTEREST PROGRAMS

- *Clifton Math, Science, & Computer Education (Grades 3-5) **Columbia Middle Math, Science, & Technology (Grades 6-8)
Evansdale Math, Science, & Language (Grades K-5) Columbia High Math, Science, Technology (Grade 9-12)
*Snapfinger Math, Science, & Technology (Grades 4-5) DeKalb Performing Arts Elementary (Grades K-7)

*This program has been recommended for merger with Clifton Elementary Schools Mathematics, Science, and Computer Education Magnet Program pending DeKalb County Board of Education approval.

**Henderson Middle School Magnet Program will transfer to Columbia Middle School effective July 1, 2009.

Agreement of Understanding

By signing below, I acknowledge my understanding of the following conditions for this application:

- 1. THE DEADLINE TO SUBMIT THIS APPLICATION AND SUPPORTING DOCUMENTATION IS APRIL 3, 2009.
2. Failure to complete all requested information COMPLETELY AND ACCURATELY will cause this application to be voided for the 2009-2010 application process.
3. It is the parent/legal guardian's responsibility to submit any additional admission requirements (test scores, report card, proof of residence, birth certificate, recommendations, etc.) by April 3, 2009 or the application will be voided for the 2009-2010 application process.
4. Applicants of multiple births applying for the same magnet program and grade level will be placed simultaneously if eligible and selected.
5. Students who fail to meet the DeKalb County School System promotion criteria will lose placement in the selected magnet program.
6. A random selection process will be utilized to admit eligible applicants when the number of eligible student applications applying for the selected magnet program exceeds the number of seats available.

Parent/Legal Guardian's Signature

Date



2009-2010 Application for Montessori Programs



Who is presently eligible to apply for a Montessori program? Students who reside in the DeKalb County School District who will enroll in grades K-5 and meet the student selection program requirements.

Indicate your choices by placing a (1) by your first choice, a (2) by your second choice, and a (3) by your third choice if desired. Student placement is based on meeting program requirements and availability of seats. Therefore, neither choice 1, 2 or 3 is guaranteed. Based on lottery selection of eligible applicants, placement will be assigned through the Office of Student Assignment as seats become available. Please be aware that there may be few or no seats available in some Montessori grade levels or sites. If a student is selected to attend a Montessori program, through the Office of Student Assignment, please be aware that no transportation will be provided. Parents must provide transportation to and from school each day.

_____ Briar Vista Elementary School Montessori Program (K-5)	_____ Huntley Hills Elementary School Montessori Program (K-5)	_____ Midway Elementary School Montessori Program (K-5)
---	---	--

Name of student: _____

DeKalb Student I.D.#: _____ Present School Attending _____

Present Grade Level: _____

If the applicant is not enrolled in a DeKalb County school, has the student ever attended a DeKalb County school? _____ Yes _____ No

If yes, where? _____

Date of Birth: Month _____ Day _____ Year _____ Age as of Sept. 1, 2009: _____

Check the program the applicant is presently enrolled in this 2008-2009 school year.

_____ Special Education	_____ Gifted	_____ ESOL	_____ ELL	_____ High Achievers
-------------------------	--------------	------------	-----------	----------------------

Montessori Program Student Selection Requirements

Applicants applying for kindergarten MUST:

- meet the Georgia Age of Entry requirement mandating that kindergarten students turn age 5 by 9/1/09
- provide the applicant's certified birth certificate
- reside in the DeKalb County School District and provide proof of residency

Applicants applying for the Montessori Elementary I Classroom (generally first, second, or third grade) MUST:

- meet the Georgia Age of Entry requirement of turning age 6 by 9/1/09 (This only applies to students applying for first grade.)
- reside in the DeKalb County School District and provide proof of residency
- provide a current report card to verify the student's grade level
- provide documentation indicating the student has attended a Montessori Program at the primary level for at least one year

Applicants applying for the Montessori Elementary II Classroom (generally fourth or fifth grade) MUST:

- reside in the DeKalb County School District and provide proof of residency
- provide a current report card to verify the student's grade level
- provide documentation indicating the student has attended a Montessori Program at the Elementary I level for at least one year

Present Address : _____ / _____
Street Address Bldg./Apt. #

City _____ GA _____ Zip Code _____

Mother's/Guardian's Name	Father's/Guardian's Name
Home Phone	Home Phone
Business Phone	Business Phone
Cell Phone	Cell Phone

Is either parent/guardian a DeKalb County School System employee? _____ Yes _____ No

Employee I.D. #: _____ Employee Location _____

Is the applicant a child of a multiple birth (twin, triplet, etc.)? _____ Yes _____ No

If yes, list the name(s), any special services required and grade(s) of the multiple birth sibling(s):

Sibling Name	Special Services Required	Sibling Grade Level for 2009-2010

- All completed applications and accompanying documents must be returned to the Office of Student Assignment by **April 3, 2009** to be considered for placement for the 2009-2010 school year. Submit the application by U.S. Mail or Hand Delivery. A lottery will be held to determine student placement. **All students selected through the lottery will be wait-listed until seats become available.**
- Applications received after the April 3, 2009 deadline will be labeled late and considered on a space-available basis after the initial selection process has been completed.
- All students selected to attend a Montessori program are expected to maintain appropriate behavior and are subject to the rights and responsibilities listed in the DeKalb County School System Student Code of Conduct.
- If the selected student does not meet promotion criteria (pass the CRCT) by the first day of school, the student's placement will be declined and offered to the next available applicant.
- No additional transfers will be approved to Montessori sites after September 25, 2009.
- **Copies of the following must be attached to the application.**
- Proof of DeKalb County School District residency (utility bill- water, electric or gas, affidavit of residence)
- Proof of age by September 1, 2009 (copy of certified birth certificate)

Parent Signature _____

Date Completed _____

Send Application To: Office of Student Assignment 3770 North Decatur Road Building A Decatur, GA 30032 (678 676 0715/Office)



Coralwood/Hawthorne Partnership 2009-2010 Application

Does the applicant reside in Region 2 or in one of the home attendance areas of one of the schools listed above?
____ Yes ____ No Out-of-region applicants may be considered on a space-available basis after July 10, 2009.
Transportation will not be provided.

Who is presently eligible to apply? Students who reside in the Region 2 attendance areas from the schools listed.						
Avondale E S	Brockett E S	Hawthorne E S	Knollwood E S	McLendon E S	Midway E S	Sagamore Hills E S
Briar Vista E S	Evansdale E S	Henderson Mill E S	Laurel Ridge E S	Medlock E S	Oak Grove E S	Smoke Rise E S
Briarlake E S	Fernbank E S	Idlewood E S	Livsey E S	Midvale E S	Pleasantdale E S	DeKalb School of the Arts at Hooper Alexander

Name of student: _____
 DeKalb Seven Digit Student I.D.#: _____ Present School Attending _____
 Present Grade Level: _____
 If the applicant is not enrolled in a DeKalb County school, has the student ever attended a DeKalb County school? ____ Yes ____ No
 If yes, where? _____
 Date of Birth: Month _____ Day _____ Year _____ Age as of Sept. 1, 2009: _____

Please list Special Education services your child is presently receiving.

Georgia State Age Entry Requirements

Applicants MUST meet the Georgia Age of Entry requirement of turning age 3, 4, 5 or 6 by 9/1/09.

Present Address : _____ / _____
 Street Address Bldg./Apt. #
 _____ GA _____
 City Zip Code

Mother's Name	Father's Name	Guardian's Name
Home Phone	Home Phone	Home Phone
Business Phone	Business Phone	Business Phone
Cell Phone	Cell Phone	Cell Phone

Is either parent/guardian a DeKalb County School System employee? ____ Yes ____ No
 Employee I.D. #: _____ Employee Location _____

If selected for enrollment, are you requesting bus transportation? ____ Yes ____ No

Transportation is only provided for students residing in the Coralwood ES attendance area except three year old students. General education students residing in the attendance area will follow the most current DeKalb County School System transportation policy.

Does the student have a brother or sister applying to or enrolled in the Coralwood School and Diagnostic Center Regional School Choice Option?
____ Yes ____ No Sibling priority is available for applicants being considered for the three year-old program or the kindergarten program if seats are available. Sibling priority is not available for students being considered for the pre-kindergarten program.

List the required information for each sibling applicant. Complete an application for each child.

Sibling Name	Special Services Required	Sibling Grade Level for 2009-2010

- All completed applications and accompanying documents must be returned to the **Magnet and Theme Schools Office, 3770 North Decatur Road, Bldg B, Decatur, Georgia 30032** by **April 3, 2009** to be considered for placement for the 2009-2010 school year.
- Applications received after the **April 3, 2009** deadline will be labeled late and considered on a space-available basis after the initial selection process has been completed.
- Out-of-region applicants may be considered on a space-available basis after July 10, 2009. **Out-of-area transportation will not be provided.**
- If there are more applicants than there are seats available per grade level, then a lottery will be held to determine student placement. **Students New to DeKalb Must Attach the Required Documents to the Application.**
- Proof of DeKalb County School District residency (utility bill- water, electric or gas, affidavit of residence)
- Proof of age by September 1, 2009 (copy of birth certificate)

Parent Signature _____ / _____
 Date Completed



Ronald E. McNair Discovery Learning Academy 2009-2010 Application

Who is presently eligible to apply?					
Students applying for grades K – 5 and who reside in the Region 4 attendance areas for the schools listed.					
Cedar Grove E S	Clifton E S	Gresham Park E S	Bob Mathis E S	Oak View E S	Sky Haven E S
Chapel Hill E S	Flat Shoals E S	Hooper Alexander E S	Meadowview E S	Rainbow E S	

Does the applicant reside in Region 4 or in one of the home attendance areas of one of the schools listed above? ___ Yes ___ No
Out-of-region applicants may be considered on a space-available basis after July 10, 2009. Transportation will not be provided.

Name of student: _____
 DeKalb Seven Digit Student I.D. #: _____ Present School Attending _____
 Present Grade Level: _____ Home Attendance Area _____
 If the applicant is not enrolled in a DeKalb County school, has the student ever attended a DeKalb County school? ___ Yes ___ No
 If yes, where? _____
 Date of Birth: Month _____ Day _____ Year _____ Age as of Sept. 1, 2009: _____

Check the program the applicant is presently enrolled in this 2008-2009 school year.

<input type="checkbox"/> Special Education	<input type="checkbox"/> Gifted	<input type="checkbox"/> ESOL	<input type="checkbox"/> ELL	<input type="checkbox"/> High Achievers
Please note that students are placed in schools with instructional programs that will best serve their academic and social needs. Placement in this program is not guaranteed for all learners.				

Georgia State Age Entry Requirements	
<input type="checkbox"/>	Applicants applying for kindergarten MUST meet the Georgia Age of Entry requirement of turning age 5 by 9/1/09.
<input type="checkbox"/>	Applicants applying for first grade MUST meet the Georgia Age of Entry requirement of turning age 6 by 9/1/09.

Present Address : _____ / _____
 Street Address _____ Bldg./Apt. # _____
 _____ GA _____
 City _____ Zip Code _____

Mother's Name	Father's Name
Home Phone	Home Phone
Business Phone	Business Phone
Cell Phone	Cell Phone

Is either parent/guardian a DeKalb County School System employee? ___ Yes ___ No
 Employee I.D. #: _____ Employee Location _____

Transportation is provided for students residing in the Ronald E. McNair Discovery Learning Academy attendance area only according to the most current DeKalb County School System transportation policy.

Does the student have a brother or sister applying to **Ronald E. McNair Discovery Learning Academy Regional School Choice Option**?
 ___ Yes ___ No

List the required information for each sibling applicant. Complete an application for each child.

Sibling Name	Special Services Required	Sibling Grade Level for 2009-2010

- All completed applications and accompanying documents must be returned to the **Magnet and Theme Schools Office, 3770 North Decatur Road, Bldg B, Decatur, Georgia 30032** by **April 3, 2009** to be considered for placement for the 2009-2010 school year.
- Applications received after the **April 3, 2009** deadline will be labeled late and considered on a space-available basis after the initial selection process has been completed.
- Out-of-region applicants may be considered on a space-available basis after July 10, 2009.
- If the selected student does not meet promotion criteria (pass the CRCT) by the first day of school, the student's placement will be declined and offered to the next available applicant.
- If there are more applicants than there are seats available per grade level, then a lottery will be held to determine student placement.
Students New to DeKalb Schools Must Attach the Required Documents to the Application.
- Proof of DeKalb County School District residency (utility bill-electric or gas, affidavit of residence)
- Proof of age by September 1, 2009 (copy of birth certificate)
- Report card if applying for grades 2 – 5

 Parent Signature

 Date Completed



**International Baccalaureate (IB) Programmes
2009-2010 Application
Primary Years Programme (PYP)**

Who is presently eligible to apply?

Currently enrolled pre-kindergarten through fourth grade students who reside in the Region 2 elementary schools attendance areas.

Indicate your choices by placing a one (1) next to your first choice, a two (2) by your second choice and a three (3) by your third choice.

_____ **Avondale Elementary School** _____ **Fernbank Elementary School** _____ **Midvale Elementary School**

Does the applicant reside in Region 2? __ Yes __ No

Out-of-region applicants may be considered on a space-available basis after July 10, 2009. **Out-of-area transportation will not be provided.**

Name of student: _____

DeKalb Seven Digit Student I.D.#: _____ Present School Attending _____

Present Grade Level: _____

If the applicant is not enrolled in a DeKalb County school, has the student ever attended a DeKalb County school?

_____ Yes _____ No If yes, where? _____

Date of Birth: Month _____ Day _____ Year _____

Check the program the applicant is presently enrolled in this 2008-2009 school year.

_____ Special Education	_____ Gifted	_____ ESOL	_____ ELL
-------------------------	--------------	------------	-----------

Present Address : _____ / _____
 Street Address Bldg./Apt. #
 _____ GA _____
 City Zip Code

Mother's/Guardian's Name	Father's/Guardian's Name
Home Phone	Home Phone
Business Phone	Business Phone
Cell Phone	Cell Phone

Is either parent/guardian a DeKalb County School System employee? _____ Yes _____ No

Employee I.D. #: _____ Employee Location _____

Transportation is only provided for students residing in the attendance areas of each IB PYP Elementary School.

- All completed applications must be returned to the **Magnet and Theme Schools Office, 3770 North Decatur Road, Bldg B, Decatur, Georgia 30032** by **April 3, 2009** to be considered for placement for the 2009-2010 school year.
- Applications received after the **April 3, 2009** deadline will be labeled late and considered on a space-available basis after the initial selection process has been completed.
- **Out-of-area transportation will not be provided.**
- If there are more eligible applicants than there are seats available, then a lottery will be held to determine student placement.

 Parent Signature Date Completed

Applicants will receive an IB PYP student application packet. The International Baccalaureate (IB) Primary Years Programme (PYP) is a full-school initiative. All children at PYP schools are IB PYP students. Acceptance through the DeKalb County School System Regional School Choice is based solely on seat availability. Students from the home attendance area will be given first priority to fill open seats. The complete packet is due April 24, 2009. If you have further concerns or questions, please contact Dr. John Wilson at 678-676-0213.



**Shamrock Middle School
International Baccalaureate (IB) Programme
2009-2010 Application
Middle Years Programme (MYP)**

Who is presently eligible to apply?
Currently enrolled fifth, sixth or seventh grade students who reside in the Region 2 elementary and middle school attendance areas.

Does the applicant reside in Region 2 or in the Shamrock Middle School home attendance area? Yes No
Out-of-region applicants may be considered on a space-available basis after July 10, 2009. **Out-of-area transportation will not be provided.**

Name of student: _____

DeKalb Seven Digit Student I.D.#: _____ Present School Attending _____

Present Grade Level: _____

If the applicant is not enrolled in a DeKalb County school, has the student ever attended a DeKalb County school?
 Yes No If yes, where? _____

Date of Birth: Month _____ Day _____ Year _____

Check the program the applicant is presently enrolled in this 2008-2009 school year.

<input type="checkbox"/> Special Education	<input type="checkbox"/> Gifted	<input type="checkbox"/> ESOL	<input type="checkbox"/> ELL
--	---------------------------------	-------------------------------	------------------------------

Present Address : _____ / _____
Street Address Bldg./Apt. #
City GA _____ Zip Code

Mother's/Guardian's Name	Father's/Guardian's Name
Home Phone	Home Phone
Business Phone	Business Phone
Cell Phone	Cell Phone

Is either parent/guardian a DeKalb County School System employee? Yes No

Employee I.D. #: _____ Employee Location _____

Transportation is only provided for students residing in the Shamrock attendance area according to the most current DeKalb County School System transportation policy.

- All completed applications must be returned to the **Magnet and Theme Schools Office, 3770 North Decatur Road, Bldg B, Decatur, Georgia 30032** by **April 3, 2009** to be considered for placement for the 2009-2010 school year.
- Applications received after the **April 3, 2009** deadline will be labeled late and considered on a space-available basis after the initial selection process has been completed.
- **Out-of-area transportation will not be provided.**
- If there are more eligible applicants than there are seats available, then a lottery will be held to determine student placement.

_____/_____
Parent Signature Date Completed

Applicants will receive an IB MYP student application packet. The International Baccalaureate (IB) Middle Years Programme (MYP) is a full-school initiative. All children at MYP schools are IB MYP students. Acceptance through the DeKalb County School System Regional School Choice is based solely on seat availability. Students from the home attendance area will be given first priority to fill open seats. The complete packet is due April 24, 2009. If you have further concerns or questions, please contact Dr. John Wilson at 678-676-0213.



International Baccalaureate (IB) Diploma Programme (DP) 2009-2010 Application

Who is presently eligible to apply?

Currently enrolled 10th grade students who reside in the Region 2 high school attendance areas listed below.

Avondale High School Druid Hills High School Lakeside High School Tucker High School

Indicate your choices by placing a one (1) next to your first choice, a two (2) by your second choice. Neither choice is guaranteed.

_____ Druid Hills High School _____ Tucker High School

Does the applicant reside in Region 2 or in one of the high school home attendance areas listed above? __ Yes __ No

Out-of-region applicants may be considered on a space-available basis after July 10, 2009. **Out-of-area transportation will not be provided.**

Name of student: _____

DeKalb Seven Digit Student I.D.#: _____ Present School Attending _____

Present Grade Level: _____

If the applicant is not enrolled in a DeKalb County school, has the student ever attended a DeKalb County school?

_____ Yes _____ No If yes, where? _____

Date of Birth: Month _____ Day _____ Year _____

Check the program the applicant is presently enrolled in this 2008-2009 school year.

_____ Special Education	_____ Gifted	_____ ESOL	_____ ELL
-------------------------	--------------	------------	-----------

Present Address : _____ / _____

Street Address

Bldg./Apt. #

GA _____

City

Zip Code

Mother's/Guardian's Name	Father's/Guardian's Name
Home Phone	Home Phone
Business Phone	Business Phone
Cell Phone	Cell Phone

Is either parent/guardian a DeKalb County School System employee? _____ Yes _____ No

Employee I.D. #: _____ Employee Location _____

Transportation is only provided for students residing in the attendance areas of each IB DP High School.

- All completed applications must be returned to the **Magnet and Theme Schools Office, 3770 North Decatur Road, Bldg B, Decatur, Georgia 30032** by **April 3, 2009** to be considered for placement for the 2009-2010 school year.
- Applications received after the **April 3, 2009** deadline will be labeled late and considered on a space-available basis after the initial selection process has been completed.
- **Out-of-area transportation will not be provided.**
- If there are more eligible applicants than there are seats available, then a lottery will be held to determine student placement.

Parent Signature

Date Completed

Applicants will receive an IB DP student application packet. The forms and required documents must be completed and returned to the Magnet and Theme Schools Office, 3770 North Decatur Road, Bldg B, Decatur, Georgia 30032. The complete packet is due April 24, 2009. If you have further concerns or questions, please contact Dr. John Wilson at 678-676-0213.



**Martin Luther King Jr. High School
International Baccalaureate (IB) Diploma Programme (DP)
2009-2010 Application**

Who is presently eligible to apply?

Currently enrolled 10th grade students who reside in the Region 5 high school attendance areas listed below.

Lithonia High School Martin Luther King Jr. High School Miller Grove High School

_____ Martin Luther King Jr. High School

Does the applicant reside in Region 5 or in one of the high school home attendance areas listed above? __Yes __No

Out-of-region applicants may be considered on a space-available basis after July 10, 2009. **Out-of-area transportation will not be provided.**

Name of student: _____

DeKalb Seven Digit Student I.D.#: _____ Present School Attending _____

Present Grade Level: _____

If the applicant is not enrolled in a DeKalb County school, has the student ever attended a DeKalb County school?

_____ Yes _____ No If yes, where? _____

Date of Birth: Month _____ Day _____ Year _____

Check the program the applicant is presently enrolled in this 2008-2009 school year.

_____ Special Education	_____ Gifted	_____ ESOL	_____ ELL
-------------------------	--------------	------------	-----------

Present Address : _____ / _____

Street Address Bldg./Apt. #

_____ GA _____

City Zip Code

Mother's/Guardian's Name	Father's/Guardian's Name
Home Phone	Home Phone
Business Phone	Business Phone
Cell Phone	Cell Phone

Is either parent/guardian a DeKalb County School System employee? _____ Yes _____ No

Employee I.D. #: _____ Employee Location _____

Transportation is only provided for students residing in the Martin Luther King, Jr. High School attendance area.

- All completed applications must be returned to the **Magnet and Theme Schools Office, 3770 North Decatur Road, Bldg B, Decatur, Georgia 30032** by **April 3, 2009** to be considered for placement for the 2009-2010 school year.
- Applications received after the **April 3, 2009** deadline will be labeled late and considered on a space-available basis after the initial selection process has been completed.
- Out-of-area transportation will not be provided.**
- If there are more eligible applicants than there are seats available, then a lottery will be held to determine student placement.

Parent Signature _____

Date Completed _____

Applicants will receive an IB DP student application packet. The forms and required documents must be completed and returned to the Magnet and Theme Schools Office, 3770 North Decatur Road, Bldg B, Decatur, Georgia 30032. The complete packet is due April 24, 2009. If you have further concerns or questions, please contact Dr. John Wilson at 678-676-0213.

DeKalb County Board of Education

Thomas E. Bowen, Chair
Zepora Roberts, Vice Chair
Sarah Copelin-Wood
Jesse "Jay" Cunningham, Jr.
Don McChesney
Jim Redovian
Dr. Pamela Speaks
Dr. Eugene P. Walker
H. Paul Womack



Crawford Lewis, Ph.D.
Superintendent

Robert Moseley
Deputy Superintendent for Support Services

Office of Student Assignment

Alice Thompson, Ed.D.
Associate Superintendent

Deborah Wilson
Executive Assistant

Cynthia Hill, Ed.D.
Administrator

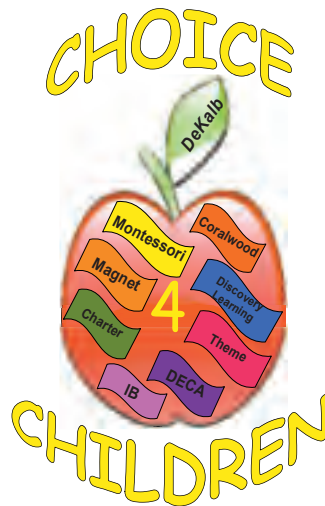
Magnet and Theme Schools Office

Patricia Copeland
Director

Kishia Towns-Dixon, Ph.D.
Coordinator

Tonya Strouble
Administrative Assistant

Pauline Cadien
Administrative Assistant



Magnet and Theme Schools Office

3770 North Decatur Road, Bldg B
Decatur, Georgia 30032
678-676-0018

Office of Student Assignment

3770 North Decatur Road, Bldg A
Decatur, Georgia 30032
678-676-0715