



RICHARD
WITTSCHIEBE
HAND

ARCHITECTURE
INTERIORS
PLANNING

15 Simpson Street
Marietta, Georgia 30066

THIS DRAWING IS THE PROPERTY OF RICHARD WITTSCHIEBE ARCHITECTURE INTERIORS PLANNING. IT IS TO BE USED ONLY FOR THE PROJECT AND SITE SPECIFICALLY IDENTIFIED HEREON AND IS NOT TO BE REPRODUCED OR COPIED IN ANY MANNER WITHOUT THE WRITTEN CONSENT OF RICHARD WITTSCHIEBE ARCHITECTURE INTERIORS PLANNING.

Dunwoody-Chamblee Area Elementary School 'D' DeKalb County School System Womack Road

REVISIONS

01/18/2008 95% CD submittal
01/18/2008 100% CD submittal

Composite Plans
Composite
Floor Plan--
Second Floor

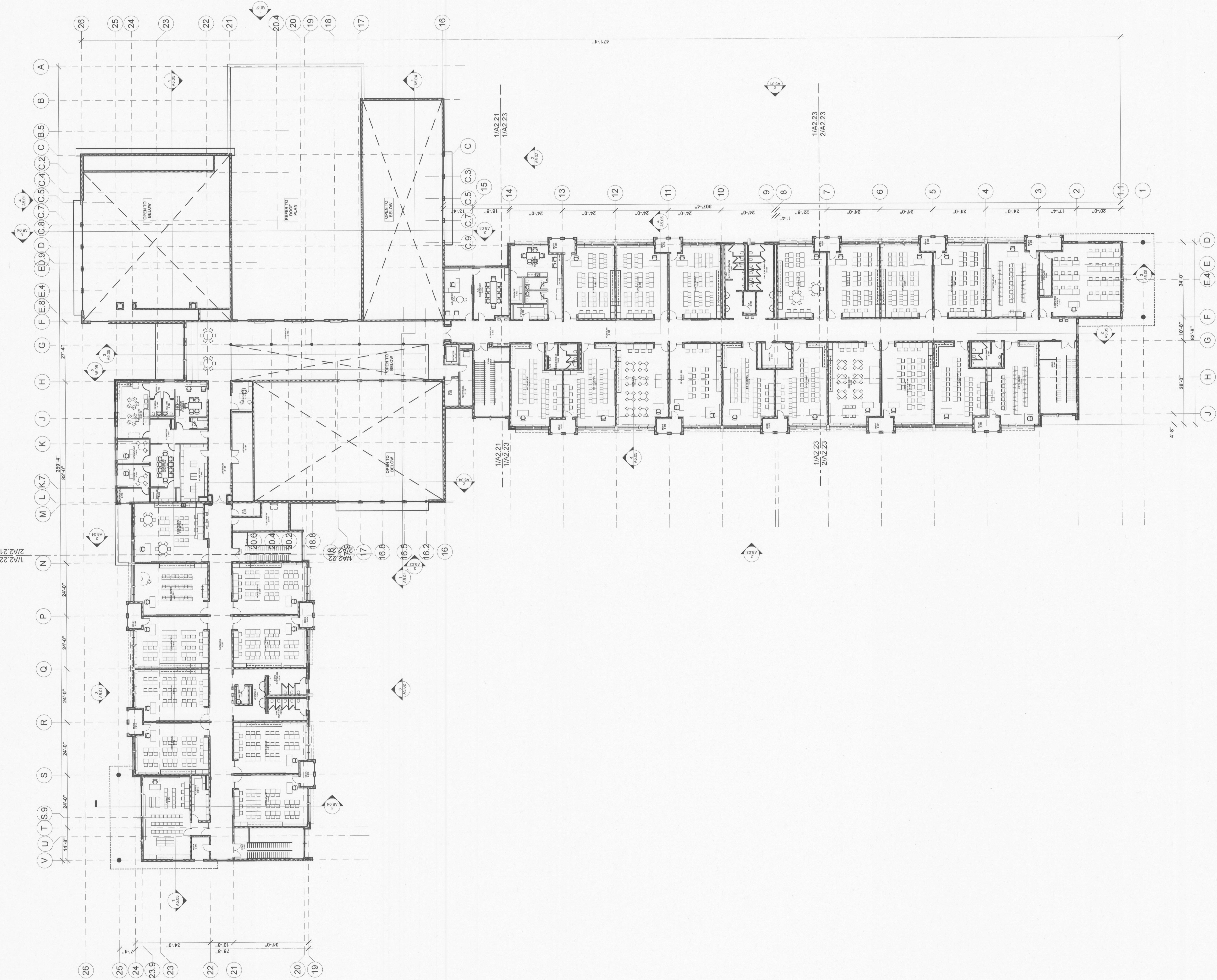
JOB NUMBER
200621

DATE
01/18/2008

SHEET NUMBER

A1.12

SYMBOL LEGEND	
	KEYNOTE
	DOOR NUMBER
	WINDOW IDENTIFIER
	WALL TYPE IDENTIFIER
	WALL TYPE IDENTIFIER - FIRE RATED
	BUILDING SECTION INDICATOR
	DRAWING NUMBER / SHEET NUMBER
	INTERIOR ELEVATION INDICATOR
	ENLARGED DETAIL INDICATOR
	COLUMN LINE MARKER
	ELEVATION DESIGNATION
	ROOM NAME & ROOM NUMBER
	REVISION INDICATOR
	DIMENSION TO FACE OF MATERIAL
	DIMENSION TO CENTER LINE
	DIMENSION TO FINISH FACE



1 Composite Plan--Second Floor
SCALE: 1" = 20'