

Dunwoody-Chamblee Area Elementary School 'D'
 Dekalb County School System
 Womack Road

REVISIONS

01	REVISED
02	REVISED
03	REVISED
04	REVISED
05	REVISED
06	REVISED
07	REVISED
08	REVISED
09	REVISED
10	REVISED
11	REVISED
12	REVISED
13	REVISED
14	REVISED
15	REVISED
16	REVISED
17	REVISED
18	REVISED
19	REVISED
20	REVISED
21	REVISED
22	REVISED
23	REVISED
24	REVISED
25	REVISED
26	REVISED
27	REVISED
28	REVISED
29	REVISED
30	REVISED
31	REVISED
32	REVISED
33	REVISED
34	REVISED
35	REVISED
36	REVISED
37	REVISED
38	REVISED
39	REVISED
40	REVISED
41	REVISED
42	REVISED
43	REVISED
44	REVISED
45	REVISED
46	REVISED
47	REVISED
48	REVISED
49	REVISED
50	REVISED
51	REVISED
52	REVISED
53	REVISED
54	REVISED
55	REVISED
56	REVISED
57	REVISED
58	REVISED
59	REVISED
60	REVISED
61	REVISED
62	REVISED
63	REVISED
64	REVISED
65	REVISED
66	REVISED
67	REVISED
68	REVISED
69	REVISED
70	REVISED
71	REVISED
72	REVISED
73	REVISED
74	REVISED
75	REVISED
76	REVISED
77	REVISED
78	REVISED
79	REVISED
80	REVISED
81	REVISED
82	REVISED
83	REVISED
84	REVISED
85	REVISED
86	REVISED
87	REVISED
88	REVISED
89	REVISED
90	REVISED
91	REVISED
92	REVISED
93	REVISED
94	REVISED
95	REVISED
96	REVISED
97	REVISED
98	REVISED
99	REVISED
100	REVISED

Job Number: 200621
 Date: 01/18/2008
 Sheet Number: A1.22

Life Safety Plan--Second Floor

GENERAL NOTES

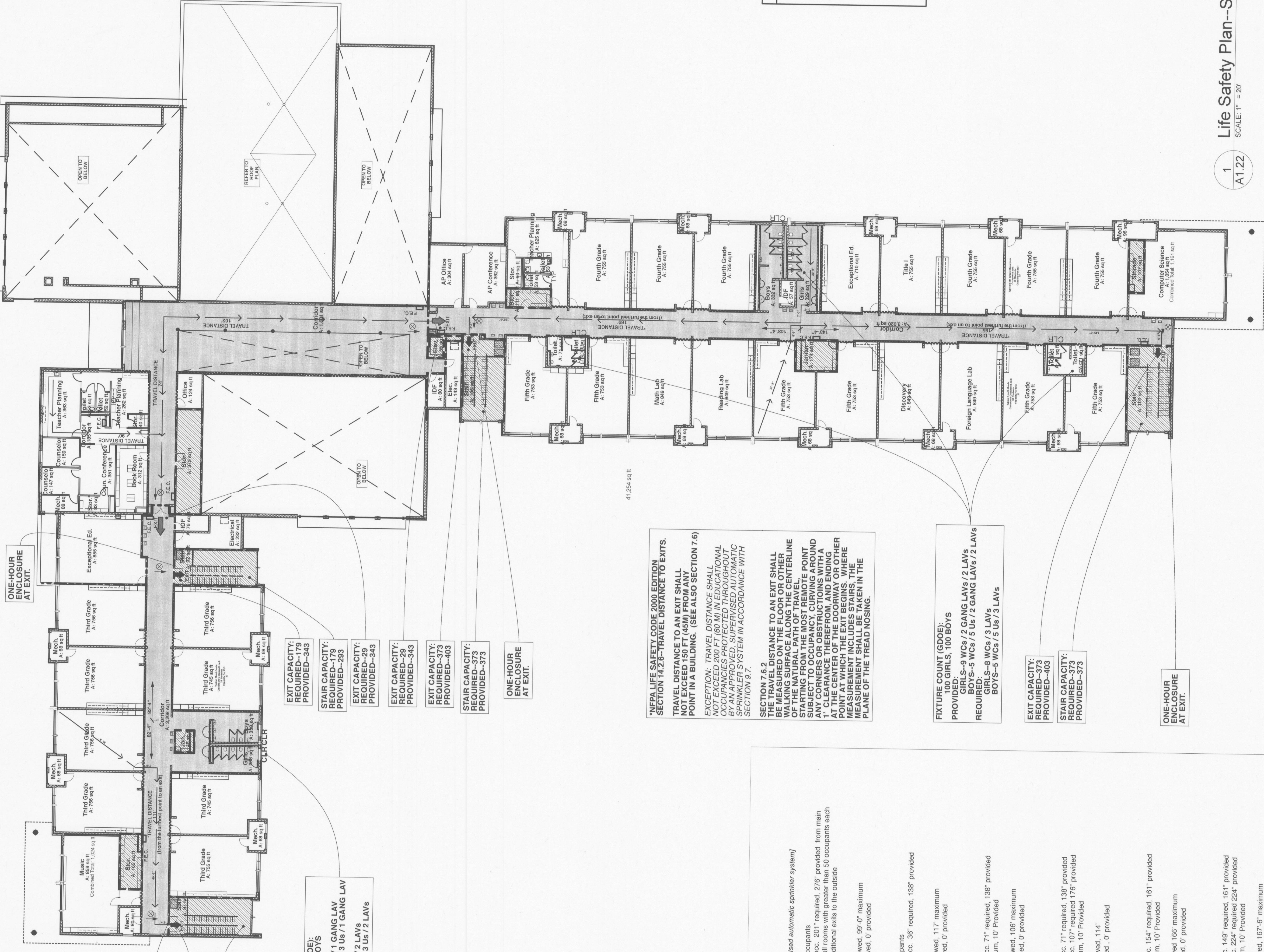
1. REFER TO WRITTEN CODE ANALYSIS LOCATED ON SHEETS A1.21 AND A1.22 FOR ADDITIONAL INFORMATION. TEACHERS' OFFICES ARE DESIGNED FOR MICROWAVE USE ONLY. THERE IS NO COOKING IN THESE SPACES.

SYMBOL LEGEND

- KEYNOTE
- DOOR NUMBER
- WINDOW IDENTIFIER
- WALL TYPE IDENTIFIER
- WALL TYPE IDENTIFIER-FIRE RATED
- BUILDING SECTION INDICATOR (Drawing Number, Sheet Number)
- WALL SECTION INDICATOR (Drawing Number, Sheet Number)
- EXTERIOR ELEVATION (Drawing Number, Sheet Number)
- INTERIOR ELEVATION (Drawing Number, Sheet Number)
- ENLARGED DETAIL INDICATOR (Drawing Number, Sheet Number)
- COLUMN LINE MARKER
- ELEVATION DESIGNATION
- ROOM NAME & ROOM NUMBER
- REVISION INDICATOR
- FINISH SYMBOLS: DIMENSION TO CENTER (LINE), DIMENSION TO FINISH (PAGE)
- FINISH SYMBOLS: DIMENSION TO UNFINISHED MATERIAL

LIFE SAFETY LEGEND

- 2 HOUR FIRE WALL
- SMOKE BARRIER
- 1 HOUR RATED ENCLOSURE
- 1 HOUR RATED PARTITION
- 2 HOUR RATED PARTITION
- SEMI-RECESSED FIRE EXTINGUISHER CABINET
- EXIT LIGHT - ARROW INDICATES EGRESS ROUTE
- TRAVEL DISTANCE INDICATOR
- AREA OF REFUGE



1
A1.22
SCALE: 1" = 20'

Life Safety Plan--Second Floor

CODE REVIEW

Name of Project: Dunwoody-Chamblee Area Elementary School 'D'
 Project Number: DCES 200621
 Project Address: Womack Road, Forest Hill, GA 30055

APPLICABLE CODES AND ZONING:

Zoning: R-100
 Building: International Building Code (IBC) 2006 Edition w/GA Amendments
 Life Safety: NFPA Life Safety Code 2000 Edition
 Mechanical: International Mechanical Code (IMC) 2006 Edition w/GA Amendments
 Electrical: National Electrical Code (NEC) 2005 Edition w/GA Amendments
 Plumbing: International Plumbing Code (IPC) 2006 Edition w/GA Amendments
 Gas: International Fuel Gas Code (IFGC) 2006 Edition w/GA Amendments
 Accessibility: ADA Accessibility Guidelines (ADAAG) 1997 Georgia Accessibility Code, Chapter 130-3-20
 Fire Safety: International Fire Code (IFC) 2006 Edition w/GA Amendments

Code Officials: Larry Barmett, Chief Building Official, Dekalb County Planning and Development Department

Occupancy Classification: Education, (LSC 6.1.3) with Assembly, (LSC 6.1.2)(A-3 in IBC)
Occupancy Separation Requirements: Mixed occupancy allowed (LSC 6.1.1.4)
Fire District: Dekalb County

Type of Construction: II-B

Allowable Height and Building Area:
 Allowable height: 55'-0" (IBC Table 503)
 Proposed building height: 36'-0"
 Allowable Building Area: (IBC Table 503)
 Enclosure by 2 hr. fire wall into three buildings.
 Section 509 Area modifications allow for a 200% increase if the building is equipped with an automatic sprinkler. (IBC Section 509.5)
 South Education area proposed 23,914 sf
 West Education area proposed 11,711 sf

Assembly Occupancy allows for 900bf area per story; 29,000sf
 Using the area increase calculations for automatic sprinklers and for occupancy on a public way.

Equation 5-2:
 $A = (580729 + 0.25)(9000) = 55$
 $A = (95904 + 0.50)(9500) = 33,725$

Assembly area proposed: 28,164sf
Allowable Assembly area: 33,725sf
Total Building area per story: 63,249sf
Total Occupied area: 104,191sf

Fire Protection Requirements:

- Shoke barriers between corridors and classrooms, except where classrooms are provided with an exit leading to a hallway.
- 1-hour fire resistance rated storage rooms and Janitor's closets over 100 sq. ft.
- 1-hour fire resistance rated equipment less than 400,000 Btu/hr. are not required to be rated. (Table 508.2 incidental use areas.)

IBC Table 601
 Required fire resistance in hours

Structural Element	Building Type ICB
Roof	0
Columns	0
Beams, Girders, Trusses, and Joists	0
Floor/Ceiling Construction	0
Exterior Bearing Walls, common or assumed prop line	0
Exterior Non-bearing Walls, common or assumed prop line	0

Fire Barriers between Building Areas:

- 7.2.4.3.1: Shall be allowed to terminate at underside of roof with Class B roof covering.
- Fire Walls: shall be allowed to terminate at exterior walls.
- No separation required between Education and Assembly uses. (Refer to IBC Table 508.3.1 for fire resistance ratings between occupancies in mixed-use buildings.)

Fire Resistance Ratings of Vertical Openings:

- "Communicating Space" allowed per NFPA 8.2.5.5.
- Interior finishes comply with more stringent of NFPA 4.3.3 and IBC Table 803.5.

Interior Finishes on Walls and Ceilings:

- Required: 150 occupant / 200 = 6 (One 30' x 48' wheelchair space per 200 occupants)
- Provided: Eight (8) spaces (two per stair)

Stair Construction:

- 2' treads @ 7'-6" = 12'-0" ; Tread depth 11'-0"

Parking Requirements:

- Required: minimum of 65 handicap accessible spaces / 1000 sq ft of floor area
- Total spaces provided: 128, includes 8 handicap accessible spaces.

Means of Egress: (All calculated with approved supervised automatic sprinkler system)

1000 Occupants
 2' per occ. 201" required, 278" provided, from walls
 spaces, all rooms with greater than 50 occupants each have additional exits to the outside

32'
 200' allowed, 85'-0" maximum
 50' allowed, 0' provided

2

Central Wings, Upper Level

Exit Capacity (width per person served)
 Minimum Corridor Width
 Minimum Corridor Length
 Maximum travel distance to an exit
 Minimum travel distance to an exit
 Minimum number of exits

Occupant Load
 Exit Capacity (width per person served)
 Minimum Corridor Width
 Minimum Corridor Length
 Maximum travel distance to an exit
 Minimum travel distance to an exit
 Minimum number of exits

West Wing, Lower Level

Occupant Load
 Exit Capacity (width per person served)
 Minimum Corridor Width
 Minimum Corridor Length
 Maximum travel distance to an exit
 Minimum travel distance to an exit
 Minimum number of exits

West Wing, Upper Level

Exit Capacity (width per person served)
 Minimum Corridor Width
 Minimum Corridor Length
 Maximum travel distance to an exit
 Minimum travel distance to an exit
 Minimum number of exits

South Wings, Lower Level

Occupant Load
 Exit Capacity (width per person served)
 Minimum Corridor Width
 Minimum Corridor Length
 Maximum travel distance to an exit
 Minimum travel distance to an exit
 Minimum number of exits

South Wings, Upper Level

Occupant Load
 Exit Capacity (width per person served)
 Minimum Corridor Width
 Minimum Corridor Length
 Maximum travel distance to an exit
 Minimum travel distance to an exit
 Minimum number of exits

NEPA LIFE SAFETY CODE CORRECTION SECTION 7.6.2 - TRAVEL DISTANCE TO EXITS.
 TRAVEL DISTANCE TO AN EXIT SHALL NOT EXCEED 150 FT (45M) FROM ANY POINT IN A BUILDING. (SEE ALSO SECTION 7.6)
 EXCEPTION: TRAVEL DISTANCE SHALL NOT EXCEED 200 FT (60 M) IN EDUCATIONAL BUILDINGS PROVIDED WITH AUTOMATIC SPRINKLER SYSTEM IN ACCORDANCE WITH SECTION 9.7.

SECTION 7.6.2
 TRAVEL DISTANCE TO AN EXIT SHALL BE MEASURED ON THE FLOOR OR OTHER WALKING SURFACE ALONG THE CENTERLINE STARTING FROM THE MOST REMOTE POINT SUBJECT TO OCCUPANCY, CURVING AROUND AT THE CENTER OF THE DOORWAY OR OTHER MEASUREMENT SHALL BE TAKEN IN THE PLANE OF THE TREAD NOSING.

FIXTURE COUNT (CODE)
 PROVIDED:
 GIRLS-9 WCs / 2 GANG LAVS / 2 LAVS
 BOYS-9 WCs / 5 WCs / 3 LAVS
 BOYS-3 WCs / 3 LAVS

EXIT CAPACITY:
 REQUIRED-373
 PROVIDED-373

STAIR CAPACITY:
 REQUIRED-373
 PROVIDED-373

ONE-HOUR ENCLOSURE AT EXIT.