

To: Mayor and City Council

From: Eric Johnson, Comprehensive Program Services

Date: June 13, 2022

Re: Park at Perimeter Center East Construction Update and Storm Water Repair Change Order Approval

Action

Authorize the Mayor, City Manager, or designee to execute all documents necessary and proper to amend the contract with Integrated Construction and Nobility Inc. for the storm water infrastructure repair needed at the park property on Perimeter Center East

Summary

As part of the construction process for the park at Perimeter Center East it is necessary to repair a 54" pipe and weir structure.

Details

As part of the due diligence prior to any land disturbance at the park construction site, City staff and the contractor identified the need to replace a corroded 54 inch pipe and a weir structure that will be utilized as part of the detention facility. The project has been on the repair list for the storm water division of Public Works for some time but is now a necessity in order to construct the park. Funds for the repair will be allocated from the storm water utility budget and not the project fund to build the park. A contract amendment is necessary for Integrated Construction and Nobility to complete the task.

Recommendation

Staff request that Council authorize the Mayor, City Manager, or designee to execute all documents necessary and proper and upon final legal review to amend the contract for Integrated Construction and Nobility in the amount of \$126,385 which includes a ten percent contingency. Funding for the project will come from the storm water utility fund.



PROJECT STATUS UPDATE

Perimeter Center East Park

Budget

Description	Amount
INTEGRATED CONSTRUCTION AND NOBILITY (NOT TO EXCEED)	\$2,820,643.00
Construction Contingency Included	\$256,422.67
COMPREHENSIVE PROGRAM SERVICES (NOT TO EXCEED)	\$82,500.00
Project Oversight Contingency Included	\$7,500.00
NOVA (NOT TO EXCEED)	\$45,000.00
Testing Contingency Included	\$1,140.00
Total Budget	\$2,948,143.00

Change Orders

- Change Order 1- Deducts to the original contract amount

Notes	Units	Price/Unit	Current Qty	Subtotals	Total
Deduct 6" SDR 35 PVC, 4" SDR35 PVC, PVC Cleanout Assembly, PVC WYES PVC Bends and replace with 6" CL350 D.I. Cement-Lined, 4" CL350 D.I. Cement-Lined, D.I. Cleanout Assembly, MJ WYES and Bends	LS	\$19,713.48	1	\$19,713.48	\$19,713.48
Flowmax Product in lieu of RCP pipe	LS	\$0.00	1	\$0.00	\$0.00
Wooden Boardwalk with Butt Piles and composite deck in lieu of clearspan 70' Bridge	LS	-\$16,500.00	1	-\$16,500.00	-\$16,500.00
Optional Trench Drain CIP Concrete with ADA Reinforced Fiberglass Grate	LS	-\$18,342.00	1	-\$18,342.00	-\$18,342.00
					-\$15,128.52

Change Orders

- Change Order 2- Weir and Storm Repairs
 - Amendment to Integrated Construction funded through the City of Dunwoody storm repair budget.

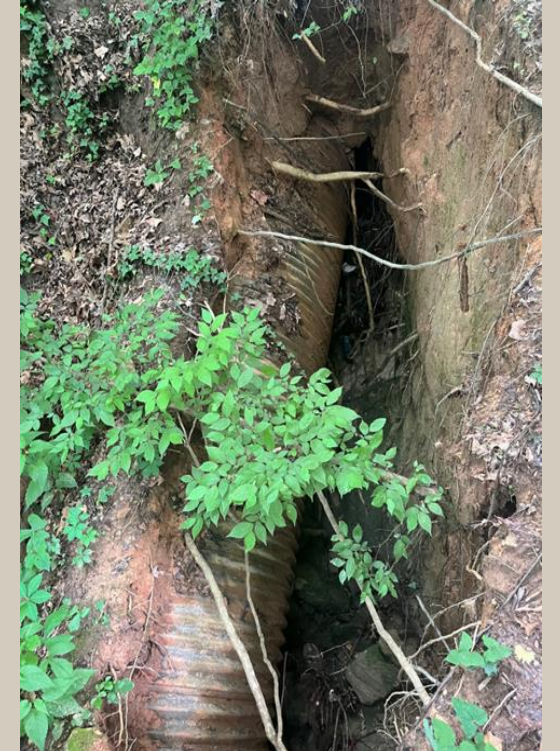
Notes	Units	Price/Unit	Current Qty	Subtotals	Total
54" 16 Gauge Aluminized type 2 Corrugated Metal Storm Replacement (From lower headwall to Perimeter Center East Extension structure)	LS	\$83,825.24	1	\$83,825.24	\$83,825.24
Lower weir flume repair	LS	\$28,272.00	1	\$28,272.00	\$28,272.00
Additional Insurance and Bond	LS	\$2,802.43	1	\$2,802.43	<u>\$2,802.43</u>
					\$114,899.67
			Time Extension	90	



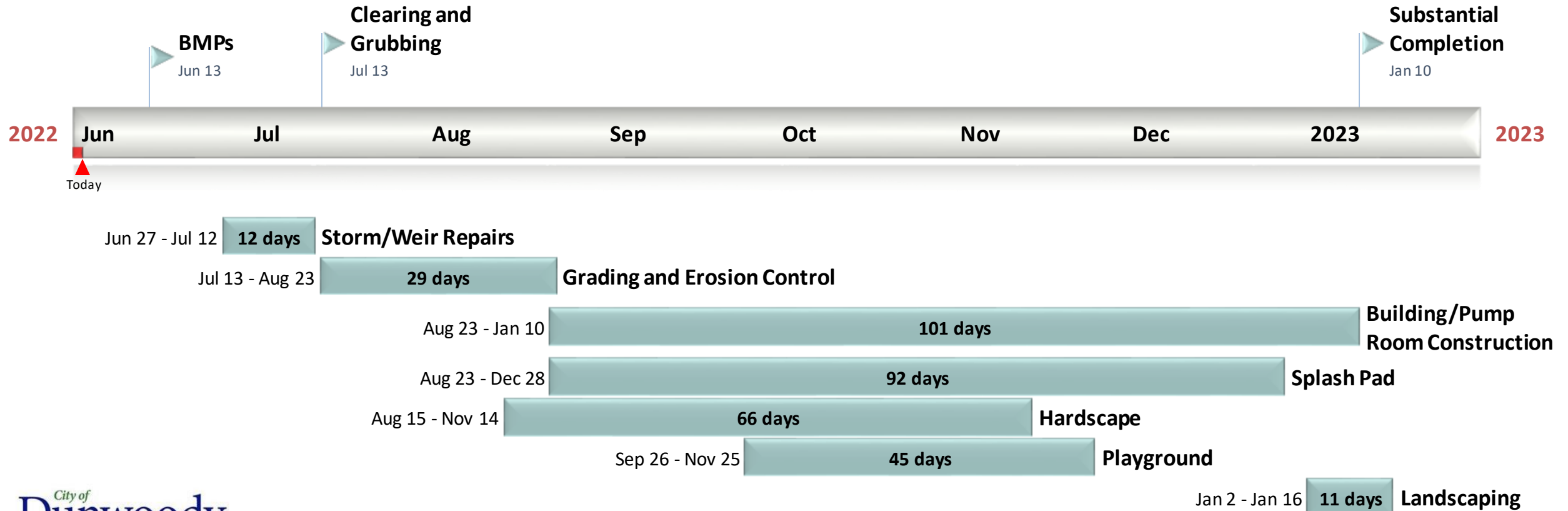
Weir Repairs



Storm Repairs



Schedule





QUESTIONS?

COST ESTIMATE SPREADSHEET

PROJECT NAME: Perimeter Center east park storm repair

CONTRACTOR: Integrated Construction and Nobility

Item	Unit	Unit Price	Qty	Cost
General Conditions				
Mobilization	EA	\$2,679.00	1	\$ 2,679.00
Out of Scope Work, Foreman	HR			\$ -
Out of Scope Work, Laborer	HR			\$ -
Traffic Control				
Traffic Control Minor 1 – Includes Continuous Crew of 2 Flagmen	Per Day			\$ -
Traffic Control Minor 2 – Includes Cones and Signage	Per Day			\$ -
Traffic Control Major - Included Road Closure Detours, Signs,	EA			\$ -
Mobile Electronic Detour Signs	Per Day			\$ -
TV Inspection and Jet-Vac Cleaning				
TV Storm Lines (includes DVD & Report)	LF			\$ -
Visual Inspection (Pictures), per Project (During Construction)	EA			\$ -
Hydro-Excavation complete (onsite hours only)	Per Hour			\$ -
Storm Line Cleaning (less than 25% full)				
12" PIPE - Cleaning less than 25% full	LF			\$ -
15" PIPE - Cleaning less than 25% full	LF			\$ -
18" PIPE - Cleaning less than 25% full	LF			\$ -
21" PIPE - Cleaning less than 25% full	LF			\$ -
24" PIPE - Cleaning less than 25% full	LF			\$ -
30" PIPE - Cleaning less than 25% full	LF			\$ -
36" PIPE - Cleaning less than 25% full	LF			\$ -
42" PIPE - Cleaning less than 25% full	LF			\$ -
48" PIPE - Cleaning less than 25% full	LF			\$ -
54" PIPE - Cleaning less than 25% full	LF			\$ -
60" PIPE - Cleaning less than 25% full	LF			\$ -
66" PIPE - Cleaning less than 25% full	LF			\$ -
72" PIPE - Cleaning less than 25% full	LF			\$ -
78" PIPE - Cleaning less than 25% full	LF			\$ -
84" PIPE - Cleaning less than 25% full	LF			\$ -
90" PIPE - Cleaning less than 25% full	LF			\$ -
96" PIPE - Cleaning less than 25% full	LF			\$ -
Storm Line Cleaning (25% full or greater)				
12" PIPE - Cleaning 25% full or greater	LF			\$ -
15" PIPE - Cleaning 25% full or greater	LF			\$ -
18" PIPE - Cleaning 25% full or greater	LF			\$ -
21" PIPE - Cleaning 25% full or greater	LF			\$ -
24" PIPE - Cleaning 25% full or greater	LF			\$ -
30" PIPE - Cleaning 25% full or greater	LF			\$ -
36" PIPE - Cleaning 25% full or greater	LF			\$ -
42" PIPE - Cleaning 25% full or greater	LF			\$ -
48" PIPE - Cleaning 25% full or greater	LF			\$ -
54" PIPE - Cleaning 25% full or greater	LF			\$ -
60" PIPE - Cleaning 25% full or greater	LF			\$ -
66" PIPE - Cleaning 25% full or greater	LF			\$ -
72" PIPE - Cleaning 25% full or greater	LF			\$ -
78" PIPE - Cleaning 25% full or greater	LF			\$ -
84" PIPE - Cleaning 25% full or greater	LF			\$ -
90" PIPE - Cleaning 25% full or greater	LF			\$ -
96" PIPE - Cleaning 25% full or greater	LF			\$ -
Specialty Storm Line Cleaning,				
Applicable to heavy roots, Large diameter rocks, large debris, etc				
12" to 36" PIPE	LF			\$ -
42" to 96" PIPE	LF			\$ -
Spiral Rib Corr. Steel Pipe (14 ga. Tp. 2 Alum)				
Includes excavation, backfill, & compaction				
15" SRCMP	LF			\$ -
18" SRCMP	LF			\$ -
24" SRCMP	LF			\$ -
30" SRCMP	LF			\$ -
36" SRCMP	LF			\$ -
42" SRCMP	LF			\$ -

48" SRCMP	LF			\$	-
54" SRCMP	LF	\$155.60	200	\$	31,120.00
60" SRCMP	LF			\$	-
72" SRCMP	LF			\$	-
84" SRCMP	LF			\$	-
96" SRCMP	LF			\$	-
Reinforced Concrete Pipe (RCP) Tp 3					
Includes excavation, backfill, & compaction					
18" RCP	LF			\$	-
24" RCP	LF			\$	-
30" RCP	LF			\$	-
36" RCP	LF			\$	-
42" RCP	LF			\$	-
48" RCP	LF			\$	-
54" RCP	LF			\$	-
60" RCP	LF			\$	-
72" RCP	LF			\$	-
High Density Polyethylene Pipe (HDPE)					
Includes excavation, backfill, & compaction					
15" HDPE	LF			\$	-
18" HDPE	LF			\$	-
24" HDPE	LF			\$	-
30" HDPE	LF			\$	-
36" HDPE	LF			\$	-
42" HDPE	LF			\$	-
48" HDPE	LF			\$	-
54" HDPE	LF			\$	-
60" HDPE	LF			\$	-
72" HDPE	LF			\$	-
Additional Depth for Pipes					
Includes excavation, backfill, & compaction					
Invert >8.1' to 12'	LF			\$	-
Invert >12'	LF			\$	-
Metal Flared End Sections: (GADOT STD 1120)					
18" MFES 16 Gauge In Place	EA			\$	-
24" MFES 14 Gauge In Place	EA			\$	-
30" MFES 14 Gauge In Place	EA			\$	-
36" MFES 14 Gauge In Place	EA			\$	-
42" MFES 14 Gauge In Place	EA			\$	-
Metal Safety End Sections: 4:1 Slope GADOT Special Detail					
18" SFES 16 Gauge In Place	EA			\$	-
24" SFES 16 Gauge In Place	EA			\$	-
30" SFES 12 Gauge In Place	EA			\$	-
36" SFES 12 Gauge In Place	EA			\$	-
42" SFES 12 Gauge In Place	EA			\$	-
48" SFES 12 Gauge In Place	EA			\$	-
Precast Concrete Flared End Section					
18" CFES In Place	EA			\$	-
24" CFES In Place	EA			\$	-
30" CFES In Place	EA			\$	-
36" CFES In Place	EA			\$	-
42" CFES In Place	EA			\$	-
Precast Concrete Safety Flared End Section					
18" CFSES In Place	EA			\$	-
24" CFSES In Place	EA			\$	-
30" CFSES In Place	EA			\$	-
36" CFSES In Place	EA			\$	-
42" CFSES In Place	EA			\$	-
Precast Headwalls					
Precast Headwall for 18" Pipe	EA			\$	-
Precast Headwall for 24" Pipe	EA			\$	-
Precast Headwall for 30" Pipe	EA			\$	-
Precast Headwall for 36" Pipe	EA			\$	-
Precast Headwall for 42" Pipe	EA			\$	-
Precast Headwall for 48" Pipe	EA			\$	-
adding precast 54" headwall	EA	\$3,049.50	1	\$	\$3,049.50

Precast Headwall for 18" Pipe w/ Velocity Dissipater	EA		\$	-
Precast Headwall for 24" Pipe w/ Velocity Dissipater	EA		\$	-
Precast Headwall for 30" Pipe w/ Velocity Dissipater	EA		\$	-
Precast Headwall for 36" Pipe w/ Velocity Dissipater	EA		\$	-
Precast Headwall for 42" Pipe w/ Velocity Dissipater	EA		\$	-
Precast Headwall for 48" Pipe w/ Velocity Dissipater r	EA		\$	-
Cast-in-Place Concrete Headwall				
Cast-in-Place Concrete Headwall- Dekalb Std. Detail	CY		\$	-
Cast-in-Place Concrete Headwall- GDOT Std. Det. 1125	CY		\$	-
Brick-in-Place Headwall				
Brick Headwall for 18" Pipe	EA		\$	-
Brick Headwall for 24" Pipe	EA		\$	-
Brick Headwall for 30" Pipe	EA		\$	-
Brick Headwall for 36" Pipe	EA		\$	-
Brick Headwall for 42" Pipe	EA		\$	-
Brick Headwall for 48" Pipe	EA		\$	-
Brick Headwall for 54" Pipe	EA		\$	-
Brick Headwall for 60" Pipe	EA		\$	-
Brick Headwall for 72" Pipe	EA		\$	-
Rubble Masonry Headwalls (per Dekalb Co. or Gwinnett Co. Standards)				
Rubble Headwall for 18" Pipe	EA		\$	-
Rubble Headwall for 24" Pipe	EA		\$	-
Rubble Headwall for 30" Pipe	EA		\$	-
Rubble Headwall for 36" Pipe	EA		\$	-
Internal Pipe Point Repairs (Including cutting, trimming, jacking, etc.)				
18" Diameter	LF		\$	-
24" Diameter	LF		\$	-
30" Diameter	LF		\$	-
36" Diameter	LF		\$	-
42" Diameter	LF		\$	-
48" Diameter	LF		\$	-
60" Diameter	LF		\$	-
72" Diameter	LF		\$	-
96" Diameter	LF		\$	-
Storm Drain Catch Basins				
New Std. Catch Basins shall be GDOT 1033/1034 or Dekalb Stds.				
4'-Dia. Brick Catch Basin GADOT 1033/1034	VF		\$	-
5'-Dia. Brick Catch Basin GADOT 1033/1034	VF		\$	-
6'-Dia. Brick Catch Basin GADOT 1033/1034	VF		\$	-
4'-Dia. Precast Catch Basin GADOT 1033/1034	VF		\$	-
5'-Dia. Precast Catch Basin GADOT 1033/1034	VF		\$	-
6'-Dia. Precast Catch Basin GADOT 1033/1034	VF		\$	-
Storm Drain Inlets & Manholes				
New Std. Inlet shall be GDOT 1019/1011 or Dekalb Stds.				
Brick Square Inlets				
4' Square Brick Inlet w/ Flush Gate Only	VF		\$	-
5' Square Brick Inlet w/ Flush Gate Only	VF		\$	-
6' Square Brick Inlet w/ Flush Gate Only	VF		\$	-
4' Square Brick Inlet w/ Curb Hood & Grate	VF		\$	-
5' Square Brick Inlet w/ Curb Hood & Grate	VF		\$	-
6' Square Brick Inlet w/ Curb Hood & Grate	VF		\$	-
4' Square Brick Inlet w/ Pedestal Top & Grate	VF		\$	-
5' Square Brick Inlet w/ Pedestal Top & Grate	VF		\$	-
6' Square Brick Inlet w/ Pedestal Top & Grate	VF		\$	-
Brick Round Inlets				
4' Round Brick Inlet w/ Flush Gate Only	VF		\$	-
5' Round Brick Inlet w/ Flush Gate Only	VF		\$	-
6' Round Brick Inlet w/ Flush Gate Only	VF		\$	-
4' Round Brick Inlet w/ Curb Hood & Grate	VF		\$	-
5' Round Brick Inlet w/ Curb Hood & Grate	VF		\$	-
6' Round Brick Inlet w/ Curb Hood & Grate	VF		\$	-

4' Round Brick Inlet w/ Pedestal Top & Grate or MH Ring & Cover	VF			\$	-
5' Round Brick Inlet w/ Pedestal Top & Grate or MH Ring & Cover	VF			\$	-
6' Round Brick Inlet w/ Pedestal Top & Grate or MH Ring & Cover	VF			\$	-
Precast Square Inlets					
4' Square Precast Inlet w/ Flush Grate Only	VF			\$	-
5' Square Precast Inlet w/ Flush Grate Only	VF			\$	-
6' Square Precast Inlet w/ Flush Grate Only	VF			\$	-
4' Square Precast Inlet w/ Curb Hood & Grate	VF			\$	-
5' Square Precast Inlet w/ Curb Hood & Grate	VF			\$	-
6' Square Precast Inlet w/ Curb Hood & Grate	VF			\$	-
4' Square Precast Inlet w/ Pedestal Top & Grate	VF			\$	-
5' Square Precast Inlet w/ Pedestal Top & Grate	VF			\$	-
6' Square Precast Inlet w/ Pedestal Top & Grate	VF			\$	-
Precast Round Inlets					
4' Round Precast Inlet w/ Flush Grate Only	VF			\$	-
5' Round Precast Inlet w/ Flush Grate Only	VF			\$	-
6' Round Precast Inlet w/ Flush Grate Only	VF			\$	-
4' Round Precast Inlet w/ Curb Hood & Grate	VF			\$	-
5' Round Precast Inlet w/ Curb Hood & Grate	VF			\$	-
6' Round Precast Inlet w/ Curb Hood & Grate	VF			\$	-
4' Round Precast Inlet w/ Pedestal Top & Grate or MH Ring & Cover	VF			\$	-
5' Round Precast Inlet w/ Pedestal Top & Grate or MH Ring & Cover	VF			\$	-
6' Round Precast Inlet w/ Pedestal Top & Grate or MH Ring & Cover	VF			\$	-
Square Brick Manholes					
4' Square Brick Manhole w/ Manhole Ring & Cover	VF			\$	-
5' Square Brick Manhole w/ Manhole Ring & Cover	VF			\$	-
6' Square Brick Manhole w/ Manhole Ring & Cover	VF			\$	-
Round Brick Manholes					
4' Round Brick Manhole w/ Manhole Ring & Cover	VF			\$	-
5' Round Brick Manhole w/ Manhole Ring & Cover	VF			\$	-
6' Round Brick Manhole w/ Manhole Ring & Cover	VF			\$	-
Square Precast Manholes					
4' Square Precast Manhole w/ Manhole Ring & Cover	VF			\$	-
5' Square Precast Manhole w/ Manhole Ring & Cover	VF			\$	-
6' Square Precast Manhole w/ Manhole Ring & Cover	VF			\$	-
Round Precast Manholes					
4' Round Precast Manhole w/ Manhole Ring & Cover	VF			\$	-
5' Round Precast Manhole w/ Manhole Ring & Cover	VF	\$594.23	4	\$	2,376.92
6' Round Precast Manhole w/ Manhole Ring & Cover	VF	\$866.40	10	\$	8,664.00
7' round precast manhole with ring and cover	VF	\$2,114.70	7		\$14,802.90
Miscellaneous & Special Structures/Components					
4' Dia. Pedestal Top with Inlet Frame and Grate	EA			\$	-
5' Dia. Pedestal Top with Inlet Frame and Grate	EA			\$	-
6' Dia. Pedestal Top with Inlet Frame and Grate	EA			\$	-
4' Dia. Pedestal Top with MH Ring & Cover	EA			\$	-
5' Dia. Pedestal Top with MH Ring & Cover	EA			\$	-
6' Dia. Pedestal Top with MH Ring & Cover	EA			\$	-
4' Dia Round to Square	EA			\$	-
5' Dia Round to Square	EA			\$	-
6' Dia Round to Square	EA			\$	-
Precast Replacement Top Only for Single Wing, w/ Ring & Cover, not including throat	EA			\$	-
Precast Replacement Top Only for Double Wing w/Ring & Cover, not including throat	EA			\$	-
4'x4' Precast Top w/ MH Ring and Cover	EA			\$	-
5'x5' Precast Top w/ MH Ring and Cover	EA			\$	-
Cast-in-Place Top Only w/Ring & Cover	EA			\$	-
Cast-in-Place Throat Only	EA			\$	-
Invert Installation, 4' Diameter	EA			\$	-
Invert Installation, 5' Diameter	EA			\$	-
Invert Installation, 6' Diameter	EA			\$	-

Invert Installation, other configurations	SF			\$	-
Uncover Buried Junction Box (<4')	EA			\$	-
Uncover Buried Junction Box (4'-7.9')	EA			\$	-
Uncover Buried Junction Box (8'-11.9')	EA			\$	-
Uncover Buried Junction Box (>12')	EA			\$	-
Brick Opening of Stormline 18" to 30" (Abandonment)	EA			\$	-
Brick Opening of Stormline 36" to 54" (Abandonment)	EA			\$	-
Flowable Fill Abandonment (Pumping included if needed)	CY			\$	-
Pressure Grouting (Pumping included if needed)	CY			\$	-
Grout Connection To Structure					
12" Grout Each End to Structure	EA			\$	-
15" Grout Each End to Structure	EA			\$	-
18" Grout Each End to Structure	EA			\$	-
21" Grout Each End to Structure	EA			\$	-
24" Grout Each End to Structure	EA			\$	-
27" Grout Each End to Structure	EA			\$	-
30" Grout Each End to Structure	EA			\$	-
36" Grout Each End to Structure	EA			\$	-
42" Grout Each End to Structure	EA			\$	-
48" Grout Each End to Structure	EA			\$	-
54" Grout Each End to Structure	EA	\$205.20	2	\$	410.40
60" Grout Each End to Structure	EA			\$	-
66" Grout Each End to Structure	EA			\$	-
72" Grout Each End to Structure	EA			\$	-
Grout all joint, cracks & holes, in structures, complete (structures 8' deep or less)	EA			\$	-
Grout all joint, cracks & holes, in structures, complete (structures greater than 8' deep)	EA			\$	-
LINING REQUIREMENTS					
Cured In Place Pipe Liner (CIPP) - (12' or less in depth)					
Includes Pre and Post Television Inspections during lining					
12" PIPE - 6.0mm (.236")	LF			\$	-
15" PIPE - 7.5mm (.295")	LF			\$	-
18" PIPE - 9.0mm (.354")	LF			\$	-
21" PIPE - 9.0mm (.354")	LF			\$	-
24" PIPE - 11.0mm (.433")	LF			\$	-
30" PIPE - 13.5mm (.532")	LF			\$	-
36" PIPE - 16.5mm (.650")	LF			\$	-
42" PIPE - 19.5mm (.768")	LF			\$	-
48" PIPE - 22.5mm (.886")	LF			\$	-
54" PIPE - 25.5mm (1.004")	LF			\$	-
60" PIPE - 28.5mm (1.122")	LF			\$	-
66" PIPE - 31.5mm (1.240")	LF			\$	-
72" PIPE - 34.5mm (1.358")	LF			\$	-
78" PIPE - 37.5mm (1.476")	LF			\$	-
84" PIPE - 42.0mm (1.654")	LF			\$	-
90" PIPE - 45.0mm (1.772")	LF			\$	-
96" PIPE - 48.0mm (1.900")	LF			\$	-
Additional Cost Per 1.5mm (.0591") Thickness - 12" PIPE	LF			\$	-
Additional Cost Per 1.5mm (.0591") Thickness - 15" PIPE	LF			\$	-
Additional Cost Per 1.5mm (.0591") Thickness - 18" PIPE	LF			\$	-
Additional Cost Per 1.5mm (.0591") Thickness - 21" PIPE	LF			\$	-
Additional Cost Per 1.5mm (.0591") Thickness - 24" PIPE	LF			\$	-
Additional Cost Per 1.5mm (.0591") Thickness - 30" PIPE	LF			\$	-
Additional Cost Per 1.5mm (.0591") Thickness - 36" PIPE	LF			\$	-
Additional Cost Per 1.5mm (.0591") Thickness - 42" PIPE	LF			\$	-
Additional Cost Per 1.5mm (.0591") Thickness - 48" PIPE	LF			\$	-
Additional Cost Per 1.5mm (.0591") Thickness - 54" PIPE	LF			\$	-
Additional Cost Per 1.5mm (.0591") Thickness - 60" PIPE	LF			\$	-
Additional Cost Per 1.5mm (.0591") Thickness - 66" PIPE	LF			\$	-
Additional Cost Per 1.5mm (.0591") Thickness - 72" PIPE	LF			\$	-
Additional Cost Per 1.5mm (.0591") Thickness - 78" PIPE	LF			\$	-
Additional Cost Per 1.5mm (.0591") Thickness - 84" PIPE	LF			\$	-
Additional Cost Per 1.5mm (.0591") Thickness - 90" PIPE	LF			\$	-
Additional Cost Per 1.5mm (.0591") Thickness - 96" PIPE	LF			\$	-
Inversion Setup					
Inversion Setup Charge 15"- 36" CIPP	EACH			\$	-
Inversion Setup Charge 42"- 60" CIPP	EACH			\$	-
Inversion Setup Charge 66"- 96" CIPP	EACH			\$	-
Spin Cast / Geopolymer Lining					

30" Cent. Spin Cast Lining	LF		\$	-
36" Cent. Spin Cast Lining	LF		\$	-
42" Cent. Spin Cast Lining	LF		\$	-
48" Cent. Spin Cast Lining	LF		\$	-
54" Cent. Spin Cast Lining	LF		\$	-
60" Cent. Spin Cast Lining	LF		\$	-
66" Cent. Spin Cast Lining	LF		\$	-
72" Cent. Spin Cast Lining	LF		\$	-
Slip Lining w/HDPE, Includes Grouting				
15" Slip Lining	LF		\$	-
18" Slip Lining	LF		\$	-
24" Slip Lining	LF		\$	-
30" Slip Lining	LF		\$	-
36" Slip Lining	LF		\$	-
42" Slip Lining	LF		\$	-
48" Slip Lining	LF		\$	-
54" Slip Lining	LF		\$	-
60" Slip Lining	LF		\$	-
Slip Lining with Snap-Tite HDPE (AASHTO M326), Include Grouting				
12.75" OD	LF		\$	-
14" OD	LF		\$	-
18" OD	LF		\$	-
20" OD	LF		\$	-
24" OD	LF		\$	-
32" OD	LF		\$	-
36" OD	LF		\$	-
42" OD	LF		\$	-
48" OD	LF		\$	-
54" OD	LF		\$	-
63" OD	LF		\$	-
Styrene Free - Cured In Place Pipe Liner (12' or Less in Depth)				
Styrene Free 12" PIPE - 7.5mm	LF		\$	-
Styrene Free 15" PIPE - 7.5mm	LF		\$	-
Styrene Free 18" PIPE - 8.0mm	LF		\$	-
Styrene Free 21" PIPE - 10.0mm	LF		\$	-
Styrene Free 24" PIPE - 10.0mm	LF		\$	-
Styrene Free 30" PIPE - 12.5mm	LF		\$	-
Styrene Free 36" PIPE - 16.0mm	LF		\$	-
Styrene Free 42" PIPE - 18.0mm	LF		\$	-
Styrene Free 48" PIPE - 21.0mm	LF		\$	-
Styrene Free 54" PIPE - 24.0mm	LF		\$	-
Styrene Free 60" PIPE - 28.5mm	LF		\$	-
Styrene Free 66" PIPE - 30.0mm	LF		\$	-
Styrene Free 72" PIPE - 32.5mm	LF		\$	-
Styrene Free 78" PIPE - 33.0mm	LF		\$	-
Styrene Free 84" PIPE - 35.5mm	LF		\$	-
Styrene Free 90" PIPE - 38.0mm	LF		\$	-
Styrene Free 96" PIPE - 40.5mm	LF		\$	-
Additional Cost Per 1.5mm Thickness Styrene Free - 12" PIPE	LF		\$	-
Additional Cost Per 1.5mm Thickness Styrene Free - 15" PIPE	LF		\$	-
Additional Cost Per 1.5mm Thickness Styrene Free - 18" PIPE	LF		\$	-
Additional Cost Per 1.5mm Thickness Styrene Free - 21" PIPE	LF		\$	-
Additional Cost Per 1.5mm Thickness Styrene Free - 24" PIPE	LF		\$	-
Additional Cost Per 1.5mm Thickness Styrene Free - 30" PIPE	LF		\$	-
Additional Cost Per 1.5mm Thickness Styrene Free - 36" PIPE	LF		\$	-
Additional Cost Per 1.5mm Thickness Styrene Free - 42" PIPE	LF		\$	-
Additional Cost Per 1.5mm Thickness Styrene Free - 48" PIPE	LF		\$	-
Additional Cost Per 1.5mm Thickness Styrene Free - 54" PIPE	LF		\$	-
Additional Cost Per 1.5mm Thickness Styrene Free - 60" PIPE	LF		\$	-
Additional Cost Per 1.5mm Thickness Styrene Free - 66" PIPE	LF		\$	-
Additional Cost Per 1.5mm Thickness Styrene Free - 72" PIPE	LF		\$	-
Additional Cost Per 1.5mm Thickness Styrene Free - 78" PIPE	LF		\$	-
Additional Cost Per 1.5mm Thickness Styrene Free - 84" PIPE	LF		\$	-
Additional Cost Per 1.5mm Thickness Styrene Free - 90" PIPE	LF		\$	-
Additional Cost Per 1.5mm Thickness Styrene Free - 96" PIPE	LF		\$	-
Cast in Place Concrete				
Paved Ditch/Swale (4" Thick)	SY		\$	-
Driveway 4" Concrete (Residential w/4" of GAB included)	SY		\$	-
Driveway 6" Concrete (Commercial w/6" of GAB included)	SY		\$	-
Driveway 8" Concrete (Commercial w/6" of GAB included)	SY		\$	-

Regular Duty Sidewalk (4" Thick, 3000 psi) <5' length	SY			\$	-
Regular Duty Sidewalk (4" Thick, 3000 psi) 5'-10' length	SY			\$	-
Regular Duty Sidewalk (4" Thick, 3000 psi) 11'-20' length	SY			\$	-
Medium Duty Sidewalk (5" Thick, Fiber Reinf. 3000 psi) <5' length	SY			\$	-
Medium Duty Sidewalk (5" Thick, Fiber Reinf. 3000 psi) 5'-10' length	SY			\$	-
Medium Duty Sidewalk (5" Thick, Fiber Reinf. 3000 psi) 11'-20' length	SY			\$	-
Heavy Duty Sidewalk (6" w/Wire Mesh, & 3500 psi) <5' length	SY			\$	-
Heavy Duty Sidewalk (6" w/Wire Mesh, & 3500 psi) 5'-10' length	SY			\$	-
Heavy Duty Sidewalk (6" w/Wire Mesh, & 3500 psi) 11'-20' length	SY			\$	-
Curb & Gutter 6"x24"x12" High Back	LF			\$	-
Curb & Gutter 6"x30"x12" High Back	LF			\$	-
Curb and Gutter 6"x24"x10" Roll Back	LF			\$	-
Straight Header Curb	LF			\$	-
Concrete Drainage Structures Poured In Place w/ Steel	CY			\$	-
High Early Strength (5000 psi)	CY			\$	-
ADA Ramp	EA			\$	-
Road Restoration					
Graded Aggregate Base	Ton			\$	-
Crusher Run Stone	Ton			\$	-
Asphaltic Concrete Binder Course	Ton			\$	-
Asphaltic Concrete Surface Course	Ton			\$	-
Tack Coat	Gal			\$	-
2" Asph. Con. Hot Mix for Trench Cap	Ton			\$	-
8" Thick 3000 psi- Concrete Trench Cap	CY			\$	-
Earthwork & Grading					
Tree Removal 6"-12"	EA			\$	-
Tree Removal 13"-23"	EA			\$	-
Tree Removal >23"	EA			\$	-
Clear & Grubbing	SY			\$	-
Channel Excavation	CY			\$	-
Additional Excavation	CY			\$	-
Haul-In Structural Fill Material	CY			\$	-
Haul-Off Soil Material	CY			\$	-
Finish Grading	SY			\$	-
Trench Rock Excavation	CY			\$	-
Debris Removal	CY			\$	-
Erosion Control					
Stone Rip Rap Type I In Place	TON			\$	-
Stone Rip Rap Type III In Place	TON	\$71.82	17	\$	1,220.94
Stone Grouted Rip Rap 12" Installed	SY			\$	-
Install & Remove Type A Silt Fence	LF			\$	-
Fleximat Ditch Lining	SY			\$	-
Install & Remove Type C Silt Fence	LF			\$	-
Install & Remove Type C Silt Fence - Alternative	LF			\$	-
Inlet Sediment Traps - Silt Fence Sd2	EA			\$	-
Rock Bags for curb inlet/CB sediment Protection	EA			\$	-
Install & Remove Orange Tree Save Fence	LF			\$	-
Gabion Structures (GDOT Section 626 & 809)	SF			\$	-
Permanent Soil Reinf Mat Installed	SY			\$	-
Organic Material Fiber Blanket Installed	SY			\$	-
Seed & Straw (Permanent Grassing)	SY			\$	-
Seed & Straw (Temporary Grassing)	SY			\$	-
Sodding Complete-Fescue	SY			\$	-
Sodding Complete-Bermuda	SY			\$	-
Sodding Complete-Zoyzia	SY			\$	-
Sodding Complete-Centipede	SY			\$	-
Topsoil Compete	CY			\$	-
Pine Straw	EA			\$	-
Straw Mulch	SY			\$	-
Tree Replacement 1-1/2" Hardwood, installed	EA			\$	-
Tree Replacement 2-1/2" Hardwood, installed	EA			\$	-
Tree Replacement 1-1/2" Hardwood, installed	EA			\$	-
Tree Replacement 2-1/2" Pine, installed	EA			\$	-
Shrub Replacement: 1 gallon, installed	EA			\$	-
Shrub Replacement: 3 gallon, installed	EA			\$	-
Shrub Replacement: 5 gallon, installed	EA			\$	-
Shrub Replacement: 7 gallon, installed	EA			\$	-
Shrub Replacement: 15 gallon, installed	EA			\$	-
Shrub Replacement: 30 gallon, installed	EA			\$	-
Bedding Flower per flat of 18, installed	SY			\$	-
Irrigation Line Replacement	LF			\$	-
Irrigation Head Replacement (Builder Grade)	EA			\$	-

Miscellaneous Items				
Connect to Existing Structures	EA	\$1,425.00	1	\$ 1,425.00
Debris Removal, Tandem Dump Truck	Per Load	\$1,167.00	3	\$ 3,501.00
Removal of Existing Non Drainage Structure	EA			\$ -
Removal of Existing Drainage Structure	EA			\$ -
Remove Existing Pipe all Types and Sizes	LF			\$ -
Saw Cut Existing Pavements	LF			\$ -
Stone #57	TON	\$47.88	160	\$ 7,660.80
Surge Stone	TON			\$ -
No. 3's and 4's Stone	TON			\$ -
Roll-Off Dumpster	EA			\$ -
Relocate Existing Residential Water Meter, Including Box	EA			\$ -
Install Thermal Barrier to protect water service line or other utilities	SF			\$ -
Bypass pumping setup-equipment and hose placement	EA			\$ -
4" Pumping Operation Time	HR			\$ -
6" Pumping Operation Time	HR			\$ -
8" Pumping Operation Time	HR			\$ -
10" Pumping Operation Time	HR			\$ -
12" Pumping Operation Time	HR			\$ -
Temporary 4' Chain Link Fence	LF			\$ -
Remove and Replace Existing 4' Galvanized Standard Chain Link Fence Residential	LF			\$ -
Remove and Replace Existing 5' Galvanized Standard Chain Link Fence Residential	LF			\$ -
Remove and Replace Existing 4' Black Vinyl Standard Chain Link Fence Residential	LF			\$ -
Remove and Replace Existing 5' Black Vinyl Standard Chain Link Fence Residential	LF			\$ -
Remove and Replace Existing 4' Wood Fence Residential	LF			\$ -
Remove and Replace Existing 6' Wood Fence Residential	LF			\$ -
Steel Plates (Typ. 5'x8' Size)	EA			\$ -
Reset Existing Headwall - 18" DIA	EA			\$ -
Reset Existing Headwall - 24" DIA	EA			\$ -
Reset Existing Headwall - 36" DIA	EA			\$ -
Reset Existing Headwall - 48" DIA	EA			\$ -
Reset Existing Headwall - 60" DIA	EA			\$ -
Adjust Manhole Cover in Pavement (complete, includes removal or modification of old structure top)	EA			\$ -
Adjust Manhole Cover in soil (complete, includes removal or modification of old structure top)	EA			\$ -
	EA			\$ -
lower weir flume repair		\$25,000.61	1	\$ 25,000.61
OH and P 10%	EA	\$10,186.17		\$10,186.17
Additional Insurance & Bond	EA	\$2,802.43		\$2,802.43
	EA			\$ -
	EA			\$ -
TOTAL				\$114,899.67
***** END OF SPECIFICATIONS *****				