



4800 Ashford Dunwoody Road  
 Dunwoody, Georgia 30338  
 dunwoodyga.gov | 678.382.6700

## MEMORANDUM

**To:** Mayor and City Council

**From:** Michael Smith, Public Works Director

**Date:** April 29, 2024

**Subject:** **Approval of a Contract with AECOM for the Concept Design Phase of the North Shallowford Road Path Project**

### **ACTION**

Authorize the Mayor, City Manager, or designee to execute all documents necessary and proper for a contract with AECOM not to exceed \$460,000, including a 5% contingency, to complete the conceptual design phase of the North Shallowford Path project.

### **SUMMARY**

The Atlanta Regional Commission has allocated \$560,000 under the federal Surface Transportation Program - Urban (STP-Urban) for the design of a shared-use path on North Shallowford Road. The city has allocated an additional \$200,000 in local SPLOST funds to satisfy the 20% local match requirement for federal funds. AECOM has submitted a final fee of \$438,963 for the concept design phase which will consist of concept plans, environmental assessments, traffic analysis and public outreach. The recommended contract limit of \$460,000 includes a 5% design contingency. Any unused funds from this phase will be applied to the final design phase. The project will follow the federal requirements for plan development with construction projected for 2029.

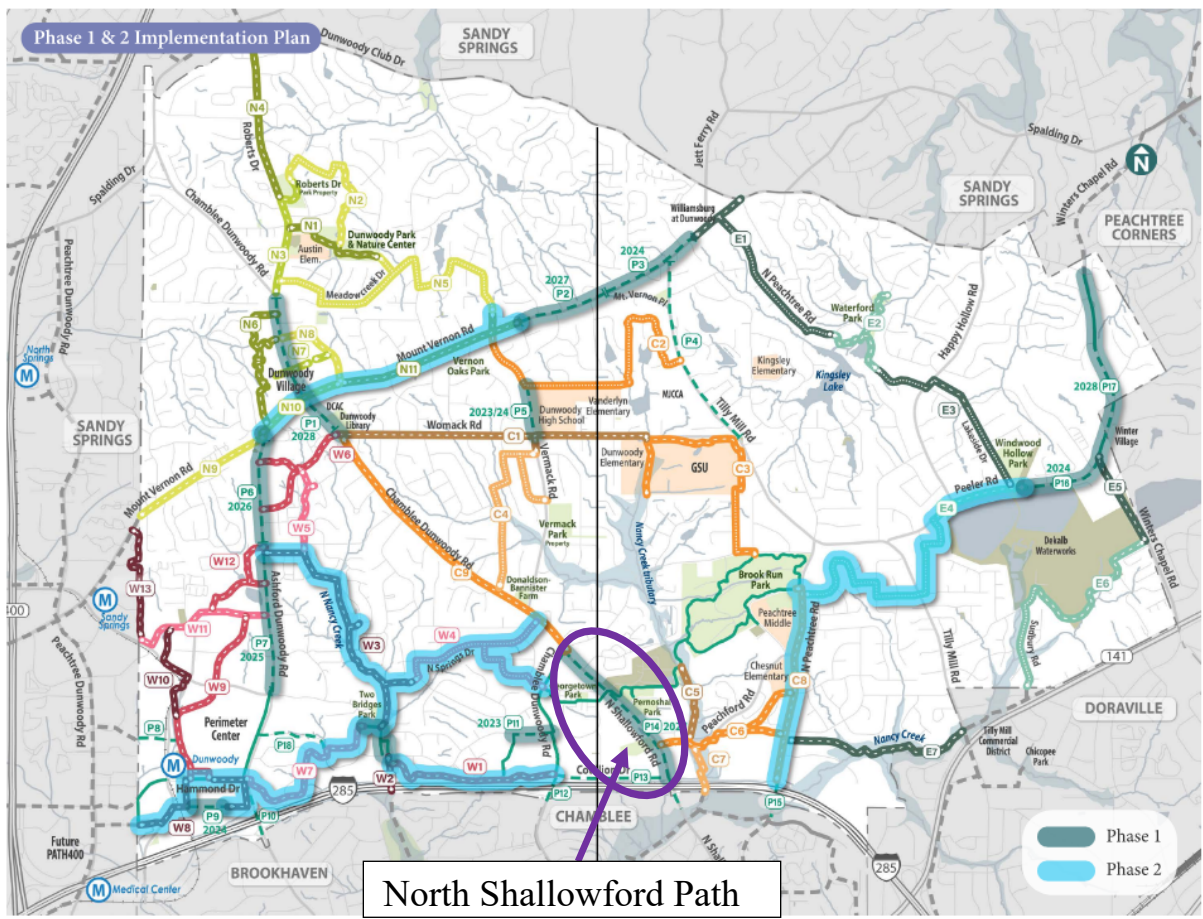
### **DETAILS**

This project is referred to in the Georgetown Master Plan as North Shallowford Road Multi-Modal Improvements consisting of sidewalks, bike lanes, landscaped buffers, pedestrian crossing improvements and lighting. It is also shown as project P14 in the Dunwoody Trail Master Plan. The scope of this project will include adding a path on one side of the road and completing the sidewalk gaps.

The city advertised a Request for Qualifications ([RFQ 23-03](#)) to complete the plan development process required for federally funded projects. Five firms submitted qualifications that were responsive to the RFQ and the four firms rated highest for qualifications were asked to submit technical proposals. Based on an evaluation of the qualifications and technical proposals, AECOM was rated as the most qualified firm to enter contract negotiations in accordance with the Georgia Department of Transportation's procurement policy.

**RECOMMENDED ACTION**

Authorize the Mayor, City Manager, or designee to execute all documents necessary and proper for a contract with AECOM not to exceed \$460,000, including a 5% contingency, to complete the conceptual design phase of the North Shallowford Path project.



Dunwoody, Georgia

04 Plan Implementation

59

**Project Location Map**

City of Dunwoody  
COST PROPOSAL

Proj. No.: 0019209  
 PI No.: 0019209  
 Prime: AECOM  
 Date: 18-Mar-2024  
 Project: N SHALLOWFORD RD FM CHAMBLEE DUNWOODY RD TO COTILLION DR-LCI  
 County: DeKalb  
 Contract Type: Cost Plus Fixed Fee  
 Fixed Fee %: 10%  
 Master Contract: contract number  
 Contract Expiration: TBD  
 Task Order No: n/a

Cost Summary

By Phase / Discipline / Firm

v Formula Pulls Firm Name from each Discipline Tab

Include a column for each discipline tab included in the proposal. Ensure formulas link to the corresponding discipline tab.

Phase	Phase Description	Total Fee	Disciplines										Totals			
			AECOM	AECOM	AECOM	Sub Firm Name 4	AECOM	AECOM		Platinum Geomatics	Sub Firm Name 4	Platinum Geomatics	Accura	AECOM		
	Enter discipline provided by firm >>		Project Management	Roadway Design	Design Support	Bridge Design & Hydraulics	Traffic Operations	Environmental	Environmental	Survey	Aerial Mapping	Utilities Investigation (SUE)	Geotech	Lighting		
	Totals	\$ 438,963.51	\$ 29,741.18	\$ 125,062.02	\$ 10,276.86	\$ -	\$ 25,968.58	\$ 160,727.31	\$ -	\$ 13,538.07	\$ -	\$ 41,900.21	\$ 23,453.90	\$ 8,295.38	\$ -	\$ -
1	Concept Development	\$ 299,410.26	\$ 19,437.41	\$ 109,386.83	\$ 10,276.86	\$ -	\$ 25,968.58	\$ 126,045.20	\$ -	\$ -	\$ -	\$ -	\$ -	\$ 8,295.38		
2	Database Preparation	\$ 58,905.48	\$ 2,227.28	\$ 1,239.92	\$ -	\$ -	\$ -	\$ -	\$ 13,538.07	\$ -	\$ 41,900.21	\$ -	\$ -			
3	Environmental Document	\$ 2,845.76	\$ 1,407.62	\$ 1,438.14	\$ -	\$ -	\$ -	\$ -	\$ -	\$ -	\$ -	\$ -	\$ -			
4	Preliminary Plans	\$ 23,453.90	\$ -	\$ -	\$ -	\$ -	\$ -	\$ -	\$ -	\$ -	\$ -	\$ 23,453.90	\$ -			
5	Right of Way Plans	\$ -	\$ -	\$ -	\$ -	\$ -	\$ -	\$ -	\$ -	\$ -	\$ -	\$ -	\$ -			
6	Final Plans	\$ -	\$ -	\$ -	\$ -	\$ -	\$ -	\$ -	\$ -	\$ -	\$ -	\$ -	\$ -			
7	Construction Services	\$ -	\$ -	\$ -	\$ -	\$ -	\$ -	\$ -	\$ -	\$ -	\$ -	\$ -	\$ -			
8	Special Studies	\$ 18,022.38	\$ -	\$ 5,406.72	\$ -	\$ -	\$ -	\$ 12,615.66	\$ -	\$ -	\$ -	\$ -	\$ -			
9	Public Involvement	\$ 36,325.73	\$ 6,668.87	\$ 7,590.41	\$ -	\$ -	\$ -	\$ 22,066.45	\$ -	\$ -	\$ -	\$ -	\$ -			
	Fixed Fee	\$ 39,134.95	\$ 2,676.48	\$ 11,323.82	\$ 934.26	\$ -	\$ 2,360.78	\$ 13,938.11	\$ 1,225.24	\$ -	\$ 3,792.11	\$ 2,130.02	\$ 754.13			

DBE (Yes or No)	PM1	Rd1	DS1	Br1	Trf1	Env1	Env2	Srv1	Map1	SUE1	OMT1	Lt1
DBE Participation	\$ 78,892.18	\$ -	\$ -	\$ -	\$ -	\$ -	\$ -	\$ 13,538.07	\$ -	\$ 41,900.21	\$ 23,453.90	\$ -
DBE %	18.0%							3.1%		9.5%	5.3%	
Contract DBE Goal %	15.0%											

Hours Summary

By Phase / Firm

Phase	Phase Description	Total Hours	Disciplines										Totals			
			AECOM	AECOM	AECOM	Sub Firm Name 4	AECOM	AECOM		Platinum Geomatics	Sub Firm Name 4	Platinum Geomatics	Accura	AECOM		
			Project Management	Roadway Design	Design Support	Bridge Design & Hydraulics	Traffic Operations	Environmental	Environmental	Survey	Aerial Mapping	Utilities Investigation (SUE)	Geotech	Lighting		
	Totals	3,301	128	986	64	-	200	1,075	-	155	-	452	181	60	-	-
1	Concept Development	2,157	82	882	64	-	200	869	-	-	-	-	-	60		
2	Database Preparation	627	12	8	-	-	-	-	155	-	452	-	-	-		
3	Environmental Document	14	6	8	-	-	-	-	-	-	-	-	-	-		
4	Preliminary Plans	181	-	-	-	-	-	-	-	-	-	181	-	-		
5	Right of Way Plans	-	-	-	-	-	-	-	-	-	-	-	-	-		
6	Final Plans	-	-	-	-	-	-	-	-	-	-	-	-	-		
7	Construction Services	-	-	-	-	-	-	-	-	-	-	-	-	-		
8	Special Studies	120	-	40	-	-	-	80	-	-	-	-	-	-		
9	Public Involvement	202	28	48	-	-	-	126	-	-	-	-	-	-		